

Palm Court 91-534 Puamaeole Street Unit 48D, Ewa Beach 96706 * Palm Court * \$530,000

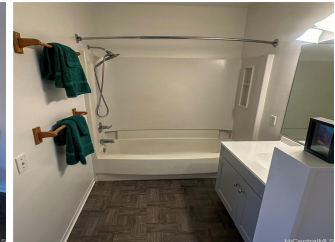
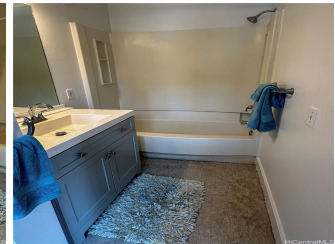
*** Originally \$555,000**

Beds: 2	MLS#: 202407980, FS	Year Built: 1991
Bath: 2/0	Status: Active	Remodeled:
Living Sq. Ft.: 810	List Date & DOM: 04-09-2024 & 37	Total Parking: 2
Land Sq. Ft.: 77,537	Condition: Above Average	Assessed Value
Lanai Sq. Ft.: 0	Frontage: Other	Building: \$339,200
Sq. Ft. Other: 0	Tax/Year: \$130/2023	Land: \$206,100
Total Sq. Ft. 810	Neighborhood: Ewa	Total: \$545,300
Maint./Assoc. \$518 / \$0	Flood Zone : Zone X - Tool	Stories / CPR: Two / No
Parking: Assigned, Covered - 1, Guest, Open - 1	Frontage: Other	

[Zoning](#): **11 - A-1 Low Density Apartment**

View: **Mountain**

Public Remarks: Welcome to unit 48D at the Palm Court in Ewa Gentry, a gated community located in the heart of Ewa. At 810 square feet, the unit features two spacious bedrooms, each with their own en-suite, a large patio, two parking stalls (1 covered), and comes with a refrigerator, gas range/oven, dishwasher, and washer/dryer. The freshly painted neutral interior allots for numerous options to make the unit your very own. Storage is also not an issue with lots of kitchen cabinet space, closets in each bedroom, and an outdoor closet. It is a ground floor corner unit, located away from the hustle and bustle of the main gate/road. The community features a large gated pool with an abundant amount of lounge chairs for relaxing and tanning, and an extensive recreation/BBQ area for hosting and gathering. A bike/walking path also lies on the outside perimeter of the community. Palm Court is located close to shopping, dining, golf courses/club, parks, and beach parks for fun in the sun! **Sale Conditions:** None **Schools:** , , * [Request Showing](#), [Photos](#), [History](#), [Maps](#), [Deed](#), [Watch List](#), [Tax Info](#)



Address	Price	Bd & Bth	Living / Avg.	Land Avg.	Lanai	Occ.	FL	DOM
91-534 Puamaeole Street 48D	\$530,000	2 & 2/0	810 \$654	77,537 \$7	0	59%	1	37

Address	Tax Maint. Ass.	Assessed Land	Assessed Building	Assessed Total	Ratio	Year & Remodeled
91-534 Puamaeole Street 48D	\$130 \$518 \$0	\$206,100	\$339,200	\$545,300	97%	1991 & NA

[91-534 Puamaeole Street 48D](#) - MLS#: [202407980](#) - Original price was \$555,000 - Welcome to unit 48D at the Palm Court in Ewa Gentry, a gated community located in the heart of Ewa. At 810 square feet, the unit features two spacious bedrooms, each with their own en-suite, a large patio, two parking stalls (1 covered), and comes with a refrigerator, gas range/oven, dishwasher, and washer/dryer. The freshly painted neutral interior allots for numerous options to make the unit your very own. Storage is also not an issue with lots of kitchen cabinet space, closets in each bedroom, and an outdoor closet. It is a ground floor corner unit, located away from the hustle and bustle of the main gate/road. The community features a large gated pool with an abundant amount of lounge chairs for relaxing and tanning, and an extensive recreation/BBQ area for hosting and gathering. A bike/walking path also lies on the outside perimeter of the community. Palm Court is located close to shopping, dining, golf courses/club, parks, and beach parks for fun in the sun! **Region:** Ewa Plain **Neighborhood:** Ewa **Condition:** Above Average **Parking:** Assigned, Covered - 1, Guest, Open - 1 **Total Parking:** 2 **View:** Mountain **Frontage:** Other **Pool:** **Zoning:** 11 - A-1 Low Density Apartment **Sale Conditions:** None **Schools:** , , * [Request Showing](#), [Photos](#), [History](#), [Maps](#), [Deed](#), [Watch List](#), [Tax Info](#)

DOM = Days on Market, Occ. = Occupancy, FL = Floor Number