

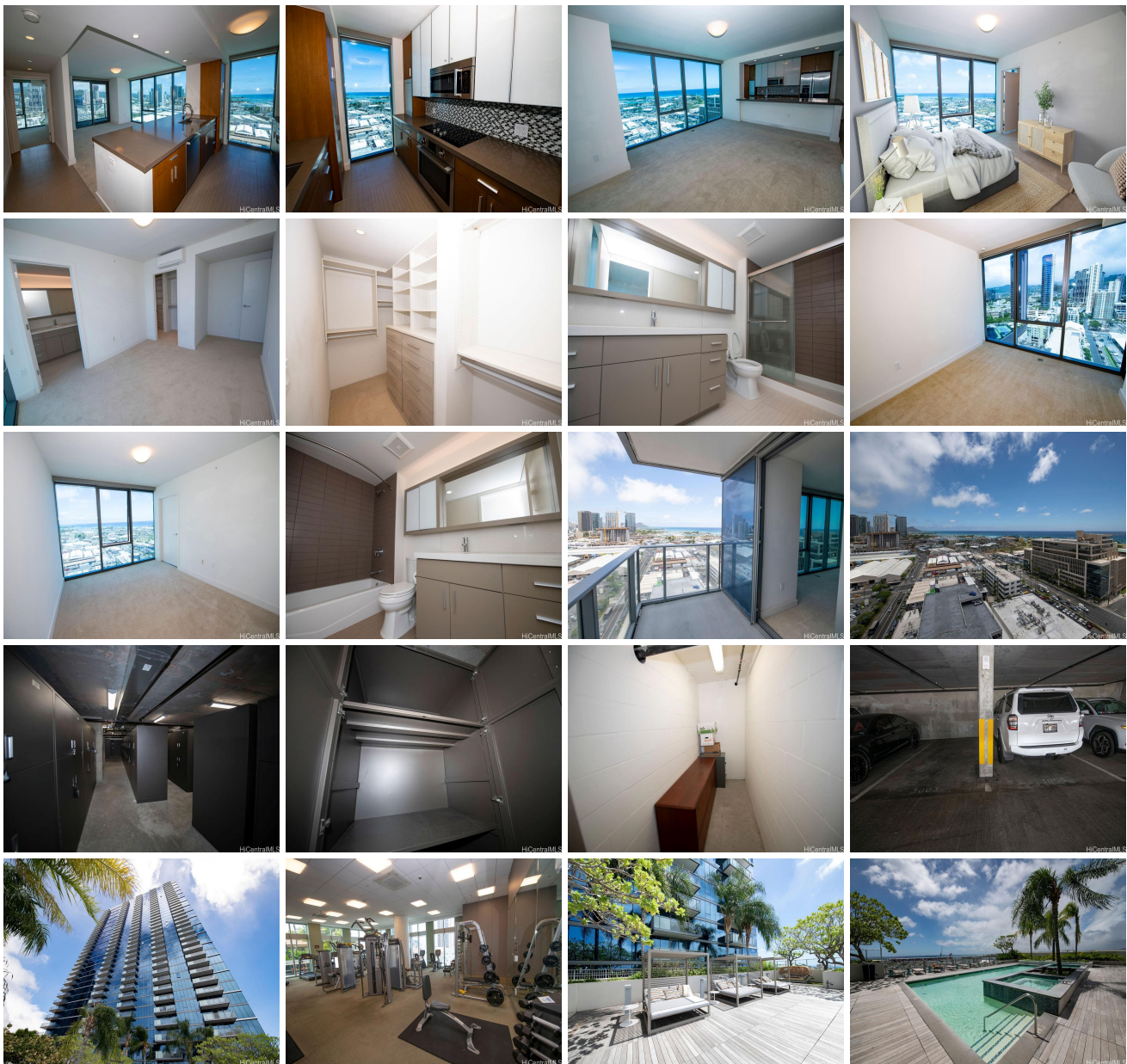
**The Collection 600 Ala Moana Boulevard Unit 1909, Honolulu 96813 \* The Collection \***

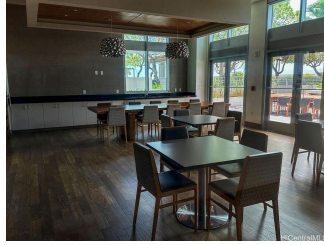
**\$1,195,000**

Beds: <b>2</b>	MLS#: <b><a href="#">202408006</a>, FS</b>	Year Built: <b>2016</b>
Bath: <b>2/0</b>	Status: <b>Pending</b>	Remodeled:
Living Sq. Ft.: <b>959</b>	List Date & DOM: <b>04-10-2024 &amp; 32</b>	Total Parking: <b>2</b>
Land Sq. Ft.: <b>0</b>	Condition: <b>Excellent</b>	<a href="#">Assessed Value</a>
Lanai Sq. Ft.: <b>77</b>	Frontage:	Building: <b>\$1,025,500</b>
Sq. Ft. Other: <b>0</b>	Tax/Year: <b>\$478/2024</b>	Land: <b>\$68,300</b>
Total Sq. Ft. <b>1,036</b>	Neighborhood: <b>Kakaako</b>	Total: <b>\$1,093,800</b>
Maint./Assoc. <b>\$967 / \$0</b>	<a href="#">Flood Zone</a> : <b>Zone X - Tool</b>	Stories / CPR: <b>15-20 / No</b>
Parking: <b>Assigned, Covered - 2, Guest</b>	Frontage:	
<a href="#">Zoning</a> : <b>Kak - Kakaako Community Development Project</b>	View: <b>Coastline, Diamond Head, Mountain, Ocean, Sunrise</b>	

**Public Remarks:** This unit in the 09 stack is rarely available and highly desired. This end unit has more windows than the interior units and enjoys cool mountain breezes and a panoramic view from the mountains to the ocean (with a full Diamond Head view in between). The standard locker is included and an additional storage room of approximately 40 square feet is also available. The primary bedroom walk-in closet has been nicely customized to include extra racks and a built-in dresser.

**Sale Conditions:** None **Schools:** , , \* [Request Showing](#), [Photos](#), [History](#), [Maps](#), [Deed](#), [Watch List](#), [Tax Info](#)





Address	Price	Bd & Bth	Living / Avg.	Land   Avg.	Lanai	Occ.	FL	DOM
<a href="#">600 Ala Moana Boulevard 1909</a>	<a href="#">\$1,195,000</a>	2 & 2/0	959   \$1,246	0   \$inf	77	51%	19	32

Address	Tax   Maint.   Ass.	Assessed Land	Assessed Building	Assessed Total	Ratio	Year & Remodeled
<a href="#">600 Ala Moana Boulevard 1909</a>	\$478   \$967   \$0	\$68,300	\$1,025,500	\$1,093,800	109%	2016 & NA

<a href="#">600 Ala Moana Boulevard 1909</a> - MLS#: <a href="#">202408006</a> - This unit in the 09 stack is rarely available and highly desired. This end unit has more windows than the interior units and enjoys cool mountain breezes and a panoramic view from the mountains to the ocean (with a full Diamond Head view in between). The standard locker is included and an additional storage room of approximately 40 square feet is also available. The primary bedroom walk-in closet has been nicely customized to include extra racks and a built-in dresser. <b>Region:</b> Metro <b>Neighborhood:</b> Kakaako <b>Condition:</b> Excellent <b>Parking:</b> Assigned, Covered - 2, Guest <b>Total Parking:</b> 2 <b>View:</b> Coastline, Diamond Head, Mountain, Ocean, Sunrise <b>Frontage:</b> <b>Pool:</b> <b>Zoning:</b> Kak - Kakaako Community Development Project <b>Sale Conditions:</b> None <b>Schools:</b> , , * <a href="#">Request Showing</a> , <a href="#">Photos</a> , <a href="#">History</a> , <a href="#">Maps</a> , <a href="#">Deed</a> , <a href="#">Watch List</a> , <a href="#">Tax Info</a>						
---	--	--	--	--	--	--

DOM = Days on Market, Occ. = Occupancy, FL = Floor Number