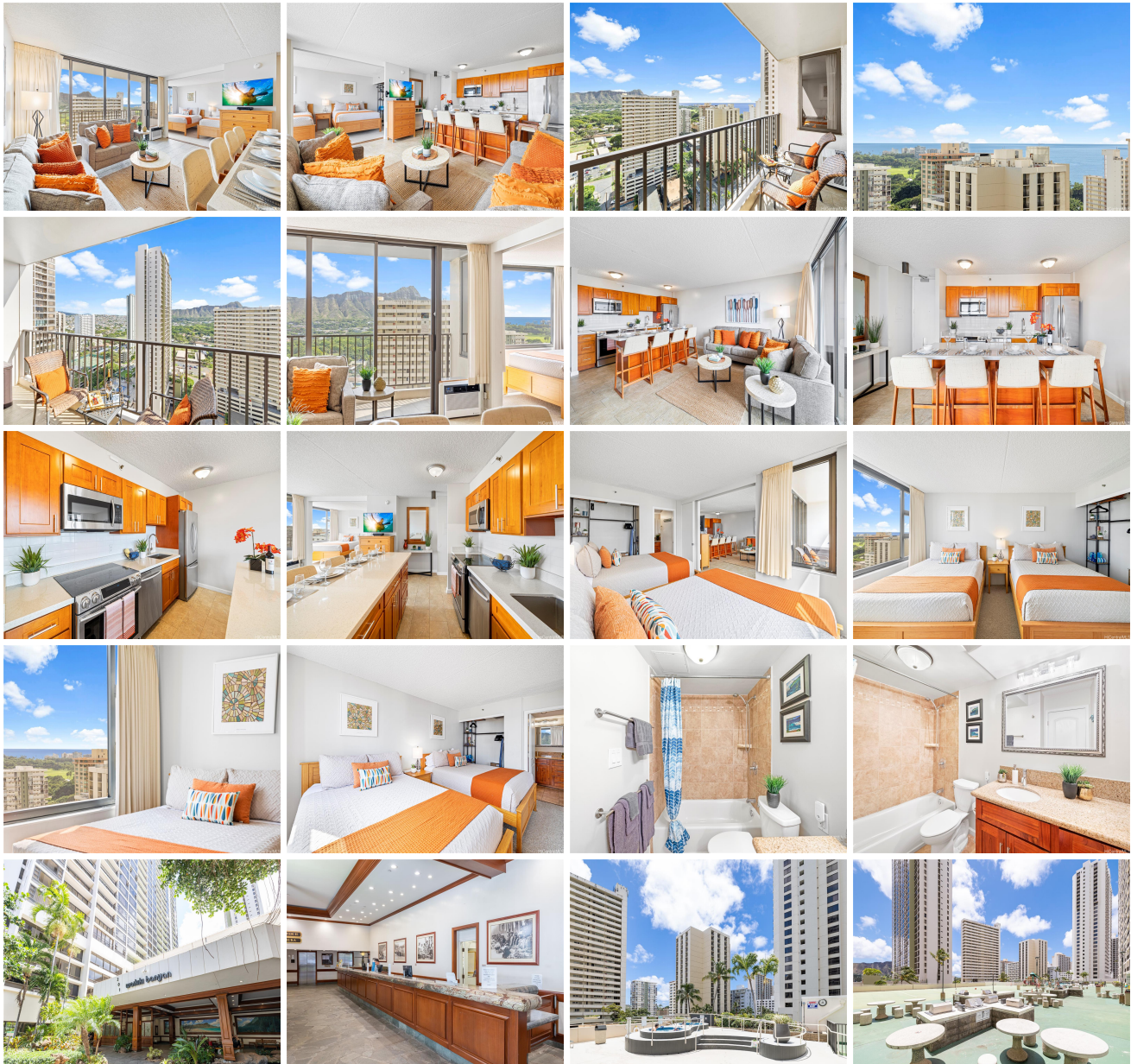


Waikiki Banyan 201 Ohua Avenue Unit 2507 T#1, Honolulu 96815 * Waikiki Banyan *

\$785,000

Beds: 1	MLS#: <u>202408037</u>, FS	Year Built: 1977
Bath: 1/0	Status: Pending	Remodeled: 2022
Living Sq. Ft.: 533	List Date & DOM: 04-17-2024 & 6	Total Parking: 1
Land Sq. Ft.: 99,796	Condition: Above Average	Assessed Value
Lanai Sq. Ft.: 67	Frontage:	Building: \$444,000
Sq. Ft. Other: 0	Tax/Year: \$664/2023	Land: \$109,000
Total Sq. Ft. 600	Neighborhood: Waikiki	Total: \$553,000
Maint./Assoc. \$722 / \$0	Flood Zone : Zone AE - <u>Tool</u>	Stories / CPR: 21+ / No
Parking: Unassigned	Frontage:	
Zoning : X2 - Apartment Precinct	View: Diamond Head, Mountain, Ocean	

Public Remarks: This beautiful Waikiki Banyan suite in Tower 1 (Makai Tower) has everything you need to make you feel at home, plus gorgeous ocean and Diamond Head views! Stylish furnishings are all included in the turnkey property. It's currently a popular vacation rental but would also make a great home. Fully furnished and sleeps up to 4 people with 2 queen sized beds. The bedroom can be separated from the living area with the sliding pocket doors as desired, or left open for you to enjoy a large open floor plan. The kitchen is fully equipped with all the basics you need to enjoy home-cooked meals during your vacation. The new window air conditioner was chosen specifically as it is engineered for quiet performance, and is self-evaporating to minimize condensation. The Waikiki Banyan features a recreation deck with a large pool, 2 spa/hot tubs, saunas, snack bar, BBQ grills with outdoor picnic seating, and a children's playground! Great location only steps to the beach, shopping, bus lines, and restaurants. Guests return year after year. Unit does not have a PUC but currently short term rentals are allowed at the Banyan. Buyer to do own due diligence. **Sale Conditions:** None **Schools:** , , * [Request Showing](#), [Photos](#), [History](#), [Maps](#), [Deed](#), [Watch List](#), [Tax Info](#)





Address	Price	Bd & Bth	Living / Avg.	Land Avg.	Lanai	Occ.	FL	DOM
201 Ohua Avenue 2507 T#1	\$785,000	1 & 1/0	533 \$1,473	99,796 \$8	67	10%	25	6

Address	Tax Maint. Ass.	Assessed Land	Assessed Building	Assessed Total	Ratio	Year & Remodeled
201 Ohua Avenue 2507 T#1	\$664 \$722 \$0	\$109,000	\$444,000	\$553,000	142%	1977 & 2022

[201 Ohua Avenue 2507 T#1](#) - MLS#: [202408037](#) - This beautiful Waikiki Banyan suite in Tower 1 (Makai Tower) has everything you need to make you feel at home, plus gorgeous ocean and Diamond Head views! Stylish furnishings are all included in the turnkey property. It's currently a popular vacation rental but would also make a great home. Fully furnished and sleeps up to 4 people with 2 queen sized beds. The bedroom can be separated from the living area with the sliding pocket doors as desired, or left open for you to enjoy a large open floor plan. The kitchen is fully equipped with all the basics you need to enjoy home-cooked meals during your vacation. The new window air conditioner was chosen specifically as it is engineered for quiet performance, and is self-evaporating to minimize condensation. The Waikiki Banyan features a recreation deck with a large pool, 2 spa/hot tubs, saunas, snack bar, BBQ grills with outdoor picnic seating, and a children's playground! Great location only steps to the beach, shopping, bus lines, and restaurants. Guests return year after year. Unit does not have a PUC but currently short term rentals are allowed at the Banyan. Buyer to do own due diligence. **Region:** Metro **Neighborhood:** Waikiki **Condition:** Above Average **Parking:** Unassigned **Total Parking:** 1 **View:** Diamond Head, Mountain, Ocean **Frontage:** **Pool:** **Zoning:** X2 - Apartment Precinct **Sale Conditions:** None **Schools:** , , * [Request Showing](#), [Photos](#), [History](#), [Maps](#), [Deed](#), [Watch List](#), [Tax Info](#)

DOM = Days on Market, Occ. = Occupancy, FL = Floor Number