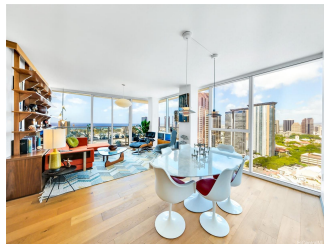


Symphony Honolulu 888 Kapiolani Boulevard Unit 2909, Honolulu 96813 * Symphony

Honolulu * \$1,598,000

Beds: 3	MLS#: 202408092, FS	Year Built: 2016
Bath: 2/0	Status: Active Under Contract	Remodeled:
Living Sq. Ft.: 1,520	List Date & DOM: 04-11-2024 & 31	Total Parking: 2
Land Sq. Ft.: 0	Condition: Excellent	Assessed Value
Lanai Sq. Ft.: 117	Frontage:	Building: \$1,503,400
Sq. Ft. Other: 0	Tax/Year: \$437/2023	Land: \$96,400
Total Sq. Ft. 1,637	Neighborhood: Kakaako	Total: \$1,599,800
Maint./Assoc. \$1,309 / \$0	Flood Zone : Zone X - Tool	Stories / CPR: One / No
Parking: Assigned, Covered - 2, Garage, Guest, Secured Entry, Street	Frontage:	
Zoning : Kak - Kakaako Community Development Project	View: City, Coastline, Mountain, Ocean, Sunset	

Public Remarks: Experience unparalleled high-rise living in this stunning corner-end residence. Enjoy breathtaking views of the cityscape, coastline and the Pacific Ocean from floor to ceiling glass windows and inviting wrap-around lanai. The primary bedroom features a spacious walk-in closet and sleek ensuite double shower. A second bedroom is professionally soundproofed, perfect for your surround sound theatre system or music-recording or gaming sessions. Unit has been upgraded with engineered oak hardwood flooring and offers designer touches like George Nelson bubble lamps, Louis Poulsen pendant lights, and Studio Becker cabinets. Symphony Honolulu is known for its resort-like amenities: private gym, BBQ cabanas, party room with kitchen, heated infinity pool, Jacuzzi spa, guest suites and more. Modern must haves include private dog park and EV-charging stations. BONUS: this unit comes with two full-sized side-by-side stalls on the desirable 4th-floor parking level. A great urban oasis awaits you! **Sale Conditions:** None **Schools:** [Royal](#), [Keelikolani](#), [Mckinley](#) * [Request Showing](#), [Photos](#), [History](#), [Maps](#), [Deed](#), [Watch List](#), [Tax Info](#)



Address	Price	Bd & Bth	Living / Avg.	Land Avg.	Lanai	Occ.	FL	DOM
888 Kapiolani Boulevard 2909	\$1,598,000	3 & 2/0	1,520 \$1,051	0 \$inf	117	61%	29	31

Address	Tax Maint. Ass.	Assessed Land	Assessed Building	Assessed Total	Ratio	Year & Remodeled
888 Kapiolani Boulevard 2909	\$437 \$1,309 \$0	\$96,400	\$1,503,400	\$1,599,800	100%	2016 & NA

[888 Kapiolani Boulevard 2909](#) - MLS#: [202408092](#) - Experience unparalleled high-rise living in this stunning corner-end residence. Enjoy breathtaking views of the cityscape, coastline and the Pacific Ocean from floor to ceiling glass windows and inviting wrap-around lanai. The primary bedroom features a spacious walk-in closet and sleek ensuite double shower. A second bedroom is professionally soundproofed, perfect for your surround sound theatre system or music-recording or gaming sessions. Unit has been upgraded with engineered oak hardwood flooring and offers designer touches like George Nelson bubble lamps, Louis Poulsen pendant lights, and Studio Becker cabinets. Symphony Honolulu is known for its resort-like amenities: private gym, BBQ cabanas, party room with kitchen, heated infinity pool, Jacuzzi spa, guest suites and more. Modern must haves include private dog park and EV-charging stations. BONUS: this unit comes with two full-sized side-by-side stalls on the desirable 4th-floor parking level. A great urban oasis awaits you! **Region:** Metro **Neighborhood:** Kakaako **Condition:** Excellent **Parking:** Assigned, Covered - 2, Garage, Guest, Secured Entry, Street **Total Parking:** 2 **View:** City, Coastline, Mountain, Ocean, Sunset **Frontage:** Pool: **Zoning:** Kak - Kakaako Community Development Project **Sale Conditions:** None **Schools:** [Royal](#), [Keelikolani](#), [Mckinley](#) * [Request Showing](#), [Photos](#), [History](#), [Maps](#), [Deed](#), [Watch List](#), [Tax Info](#)

DOM = Days on Market, Occ. = Occupancy, FL = Floor Number