

Lakeview Terrace 2889 Ala Ilima Street Unit 10A, Honolulu 96818 * Lakeview Terrace *

\$500,000

Beds: **3**

MLS#: **202408103, FS**

Year Built: **1973**

Bath: **2/0**

Status: **Active Under Contract**

Remodeled:

Living Sq. Ft.: **1,010**

List Date & DOM: **04-11-2024 & 9**

Total Parking: **1**

Land Sq. Ft.: **20,430**

Condition: **Above Average**

[Assessed Value](#)

Lanai Sq. Ft.: **50**

Frontage:

Building: **\$418,200**

Sq. Ft. Other: **0**

Tax/Year: **\$108/2023**

Land: **\$90,500**

Total Sq. Ft. **1,060**

Neighborhood: **Salt Lake**

Total: **\$508,700**

Maint./Assoc. **\$875 / \$0**

[Flood Zone](#): **Zone X - Tool**

Stories / CPR: **15-20 / No**

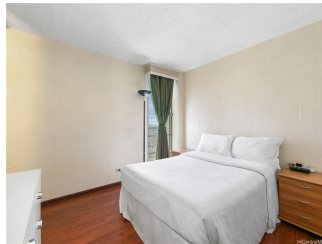
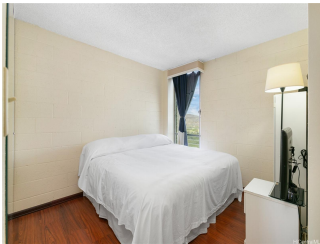
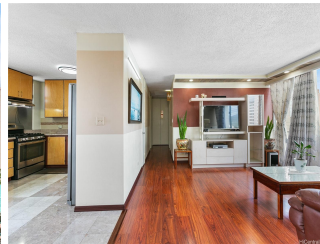
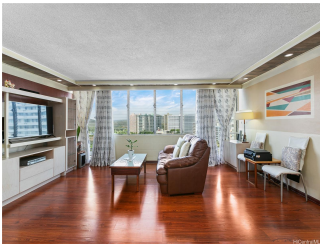
Parking: **Assigned, Open - 1, Secured Entry, Street**

Frontage:

[Zoning](#): **12 - A-2 Medium Density Apartme**

View: **City, Golf Course, Mountain, Ocean**

Public Remarks: Welcome to this rarely available, breezy unit at Lakeview Terrace, conveniently located near the entrance of Salt Lake. Enjoy beautiful ocean, golf course and mountain views! Only two residences per floor, this unit offers an open floor plan with lots of windows and natural lighting, practical layout flowing into 3 spacious bedrooms and 2 full bathrooms. Gated community with security surveillance, secured parking, fob entry, and community laundry. Pet friendly, low maintenance building with low maintenance fees of \$875/month including electricity, gas, hot water, and sewer. Close proximity to Moanalua High School, restaurants, grocery stores, shopping, airport, hospitals, fire station, bus line, municipal parking, and the overall proximity to Honolulu. This unit is priced to sell and will not last long! First Open House on Sunday, April 14 from 2-5pm. **Sale Conditions:** None **Schools:** , , * [Request Showing](#), [Photos](#), [History](#), [Maps](#), [Deed](#), [Watch List](#), [Tax Info](#)



Address	Price	Bd & Bth	Living / Avg.	Land Avg.	Lanai	Occ.	FL	DOM
2889 Ala Ilima Street 10A	\$500,000	3 & 2/0	1,010 \$495	20,430 \$24	50	70%	10	9

Address	Tax Maint. Ass.	Assessed Land	Assessed Building	Assessed Total	Ratio	Year & Remodeled
2889 Ala Ilima Street 10A	\$108 \$875 \$0	\$90,500	\$418,200	\$508,700	98%	1973 & NA

[2889 Ala Ilima Street 10A](#) - MLS#: [202408103](#) - Welcome to this rarely available, breezy unit at Lakeview Terrace, conveniently located near the entrance of Salt Lake. Enjoy beautiful ocean, golf course and mountain views! Only two residences per floor, this unit offers an open floor plan with lots of windows and natural lighting, practical layout flowing into 3 spacious bedrooms and 2 full bathrooms. Gated community with security surveillance, secured parking, fob entry, and community laundry. Pet friendly, low maintenance building with low maintenance fees of \$875/month including electricity, gas, hot water, and sewer. Close proximity to Moanalua High School, restaurants, grocery stores, shopping, airport, hospitals, fire station, bus line, municipal parking, and the overall proximity to Honolulu. This unit is priced to sell and will not last long! First Open House on Sunday, April 14 from 2-5pm. **Region:** Metro **Neighborhood:** Salt Lake **Condition:** Above Average **Parking:** Assigned, Open - 1, Secured Entry, Street **Total Parking:** 1 **View:** City, Golf Course, Mountain, Ocean **Frontage:** **Pool:** **Zoning:** 12 - A-2 Medium Density Apartme **Sale Conditions:** None **Schools:** , , * [Request Showing](#), [Photos](#), [History](#), [Maps](#), [Deed](#), [Watch List](#), [Tax Info](#)

DOM = Days on Market, Occ. = Occupancy, FL = Floor Number