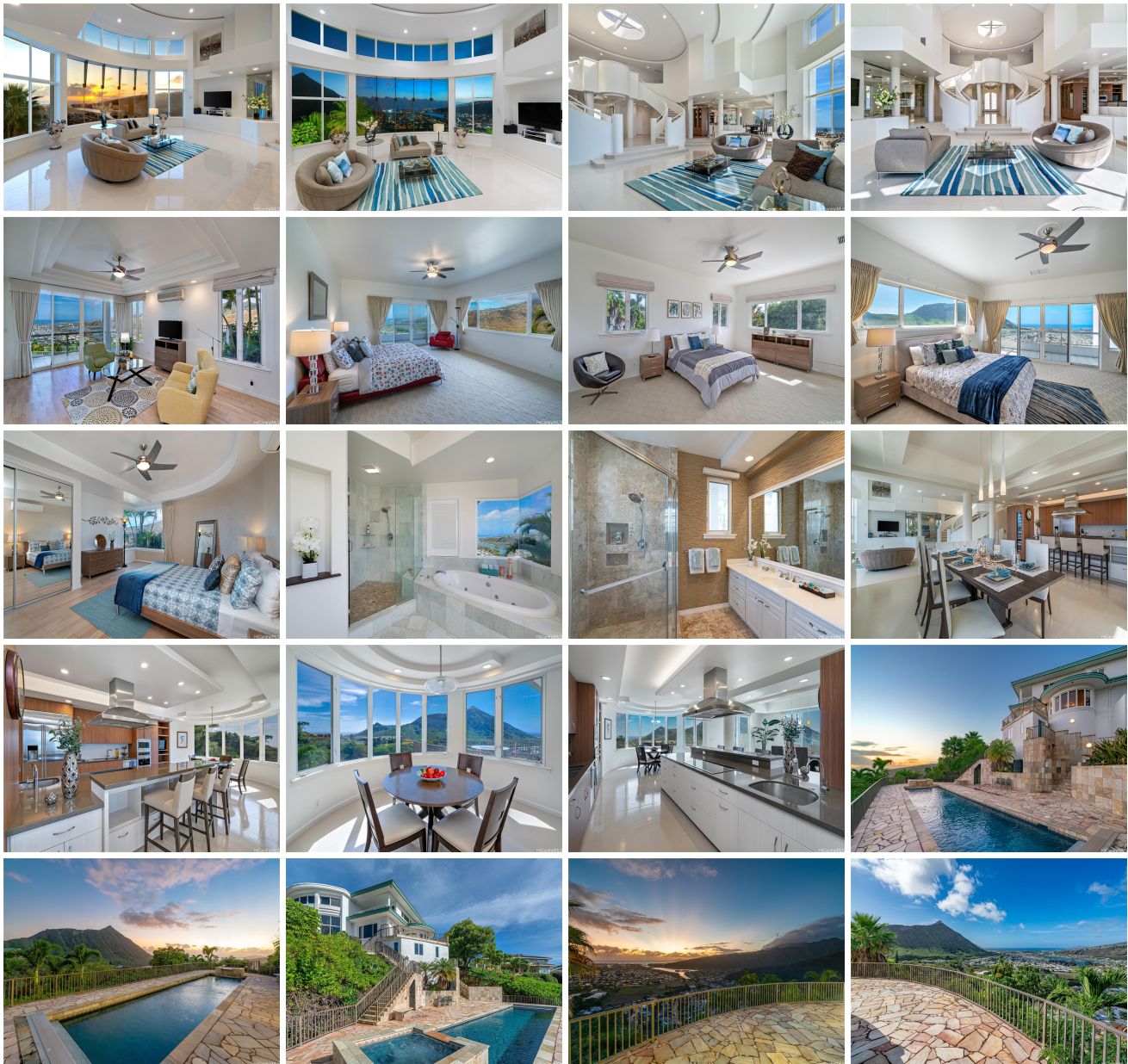


114 Hanohano Place, Honolulu 96825 * * \$3,980,000

Beds: 4	MLS#: 202408127, FS	Year Built: 1994
Bath: 4/0	Status: Active	Remodeled:
Living Sq. Ft.: 5,128	List Date & DOM: 04-15-2024 & 33	Total Parking: 4
Land Sq. Ft.: 26,690	Condition: Excellent	Assessed Value
Lanai Sq. Ft.: 383	Frontage: Other	Building: \$1,963,700
Sq. Ft. Other: 0	Tax/Year: \$3,231/2023	Land: \$2,086,200
Total Sq. Ft. 5,511	Neighborhood: Napali Haweo	Total: \$4,049,900
Maint./Assoc. \$0 / \$130	Flood Zone : Zone D - Tool	Stories / CPR: Two / No
Parking: 2 Car, Driveway, Garage	Frontage: Other	
Zoning : 03 - R10 - Residential District	View: City, Diamond Head, Mountain, Ocean	

Public Remarks: Panoramic Ocean, Marina, Koko Head and Diamond Head view estate on beautiful Hawaii Kai hillside. Extremely private residence, where indoor and outdoor luxury await you. Enjoy stunning, vibrant daytime views and romantic, picturesque nighttime views, from soaring ceilings with floor to ceiling glass windows. Main living room with an iconic double staircase, chef's kitchen, spacious dining area, office/den and a guest room are downstairs. Three large bedroom suites with two spacious lanais are upstairs. Enjoy your large private pool and outside dining at the spacious barbecue area with amazing panoramic views both during the day and with beautiful town lights at night. **Sale Conditions:** None **Schools:** , , * [Request Showing, Photos, History, Maps, Deed, Watch List, Tax Info](#)





Address	Price	Bd & Bth	Living / Avg.	Land Avg.	Lanai	Occ.	FL	DOM
114 Hanohano Place	\$3,980,000	4 & 4/0	5,128 \$776	26,690 \$149	383	0%	0	33

Address	Tax Maint. Ass.	Assessed Land	Assessed Building	Assessed Total	Ratio	Year & Remodeled
114 Hanohano Place	\$3,231 \$0 \$130	\$2,086,200	\$1,963,700	\$4,049,900	98%	1994 & NA

[114 Hanohano Place](#) - MLS#: [202408127](#) - Panoramic Ocean, Marina, Koko Head and Diamond Head view estate on beautiful Hawaii Kai hillside. Extremely private residence, where indoor and outdoor luxury await you. Enjoy stunning, vibrant daytime views and romantic, picturesque nighttime views, from soaring ceilings with floor to ceiling glass windows. Main living room with an iconic double staircase, chef's kitchen, spacious dining area, office/den and a guest room are downstairs. Three large bedroom suites with two spacious lanais are upstairs. Enjoy your large private pool and outside dining at the spacious barbecue area with amazing panoramic views both during the day and with beautiful town lights at night. **Region:** Hawaii Kai **Neighborhood:** Napali Haweo **Condition:** Excellent **Parking:** 2 Car, Driveway, Garage **Total Parking:** 4 **View:** City, Diamond Head, Mountain, Ocean **Frontage:** Other **Pool:** Above Ground,Spa/HotTub **Zoning:** 03 - R10 - Residential District **Sale Conditions:** None **Schools:** , , * [Request Showing](#), [Photos](#), [History](#), [Maps](#), [Deed](#), [Watch List](#), [Tax Info](#)

DOM = Days on Market, Occ. = Occupancy, FL = Floor Number