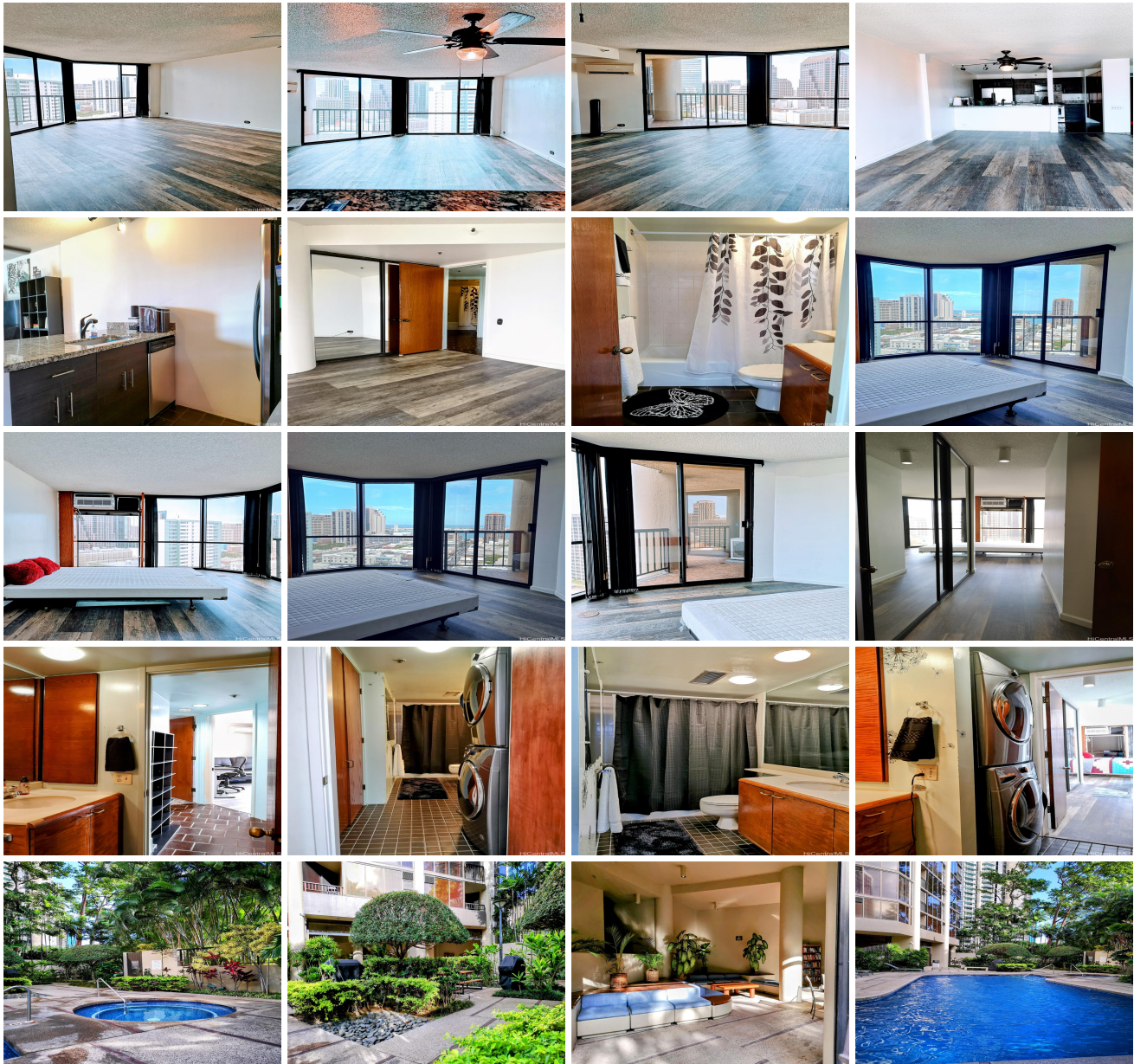


Honolulu Tower 60 N Beretania Street Unit 2110, Honolulu 96817 * Honolulu Tower *

\$489,000

| | | |
|---|---|--------------------------------|
| Beds: 2 | MLS#: <u>202408158</u>, FS | Year Built: 1982 |
| Bath: 2/0 | Status: Active | Remodeled: |
| Living Sq. Ft.: 1,064 | List Date & DOM: 04-11-2024 & 39 | Total Parking: 1 |
| Land Sq. Ft.: 74,488 | Condition: Above Average | Assessed Value |
| Lanai Sq. Ft.: 58 | Frontage: | Building: \$427,700 |
| Sq. Ft. Other: 0 | Tax/Year: \$150/2023 | Land: \$60,200 |
| Total Sq. Ft. 1,122 | Neighborhood: Chinatown | Total: \$487,900 |
| Maint./Assoc. \$802 / \$0 | Flood Zone : Zone X - Tool | Stories / CPR: 21+ / No |
| Parking: Covered - 1, Guest | Frontage: | |
| Zoning : 34 - BMX-4 Central Business Mix | View: City, Ocean, Sunset | |

Public Remarks: Honolulu Tower has beautiful ocean sunsets and majestic views of the downtown skyline. This spacious unit has floor to ceiling windows to really take in the views. Partially renovated kitchen with stainless steel appliances and granite counter tops, luxury vinyl flooring in living-room, primary and second bedrooms, full size washer/dryer in-unit, pantry closet provides ample storage space. The Honolulu Tower offers a blend of modern city living and great comfort with its resort like amenities that include, swimming pool, hot tub, well manicured zen like garden, BBQ area, resident manager, 24/7 onsite security, keyed entry and elevators, secured covered assigned parking stall, pet friendly building with pet area. Steps away from Chinatown and close proximity to Honolulu Financial District, The Chinese Cultural Plaza, Longs CVS Drug Store, Safeway, Hospitals, Access to H-1, Diverse culinary eateries and boutique shopping. Maintenance fee includes internet, cable TV (including HBO-Max & Showtime), hot water, water, and sewer. Come experience the urban charm of Honolulu Tower for yourself, call Sean now for a showing. Unit sold "As is" **Sale Conditions:** None **Schools:** , , * [Request Showing](#), [Photos](#), [History](#), [Maps](#), [Deed](#), [Watch List](#), [Tax Info](#)





| Address | Price | Bd & Bth | Living / Avg. | Land Avg. | Lanai | Occ. | FL | DOM |
|--|---------------------------|----------|---------------|--------------|-------|------|----|-----|
| 60 N Beretania Street 2110 | \$489,000 | 2 & 2/0 | 1,064 \$460 | 74,488 \$7 | 58 | 63% | 21 | 39 |

| Address | Tax Maint. Ass. | Assessed Land | Assessed Building | Assessed Total | Ratio | Year & Remodeled |
|--|---------------------|---------------|-------------------|----------------|-------|------------------|
| 60 N Beretania Street 2110 | \$150 \$802 \$0 | \$60,200 | \$427,700 | \$487,900 | 100% | 1982 & NA |

[60 N Beretania Street 2110](#) - MLS#: [202408158](#) - Honolulu Tower has beautiful ocean sunsets and majestic views of the downtown skyline. This spacious unit has floor to ceiling windows to really take in the views. Partially renovated kitchen with stainless steel appliances and granite counter tops, luxury vinyl flooring in living-room, primary and second bedrooms, full size washer/dryer in-unit, pantry closet provides ample storage space. The Honolulu Tower offers a blend of modern city living and great comfort with its resort like amenities that include, swimming pool, hot tub, well manicured zen like garden, BBQ area, resident manager, 24/7 onsite security, keyed entry and elevators, secured covered assigned parking stall, pet friendly building with pet area. Steps away from Chinatown and close proximity to Honolulu Financial District, The Chinese Cultural Plaza, Longs CVS Drug Store, Safeway, Hospitals, Access to H-1, Diverse culinary eateries and boutique shopping. Maintenance fee includes internet, cable TV (including HBO-Max & Showtime), hot water, water, and sewer. Come experience the urban charm of Honolulu Tower for yourself, call Sean now for a showing. Unit sold "As is" **Region:** Metro **Neighborhood:** Chinatown **Condition:** Above Average **Parking:** Covered - 1, Guest **Total Parking:** 1 **View:** City, Ocean, Sunset **Frontage:** **Pool:** **Zoning:** 34 - BMX-4 Central Business Mix **Sale Conditions:** None **Schools:** , , * [Request Showing](#), [Photos](#), [History](#), [Maps](#), [Deed](#), [Watch List](#), [Tax Info](#)

DOM = Days on Market, Occ. = Occupancy, FL = Floor Number