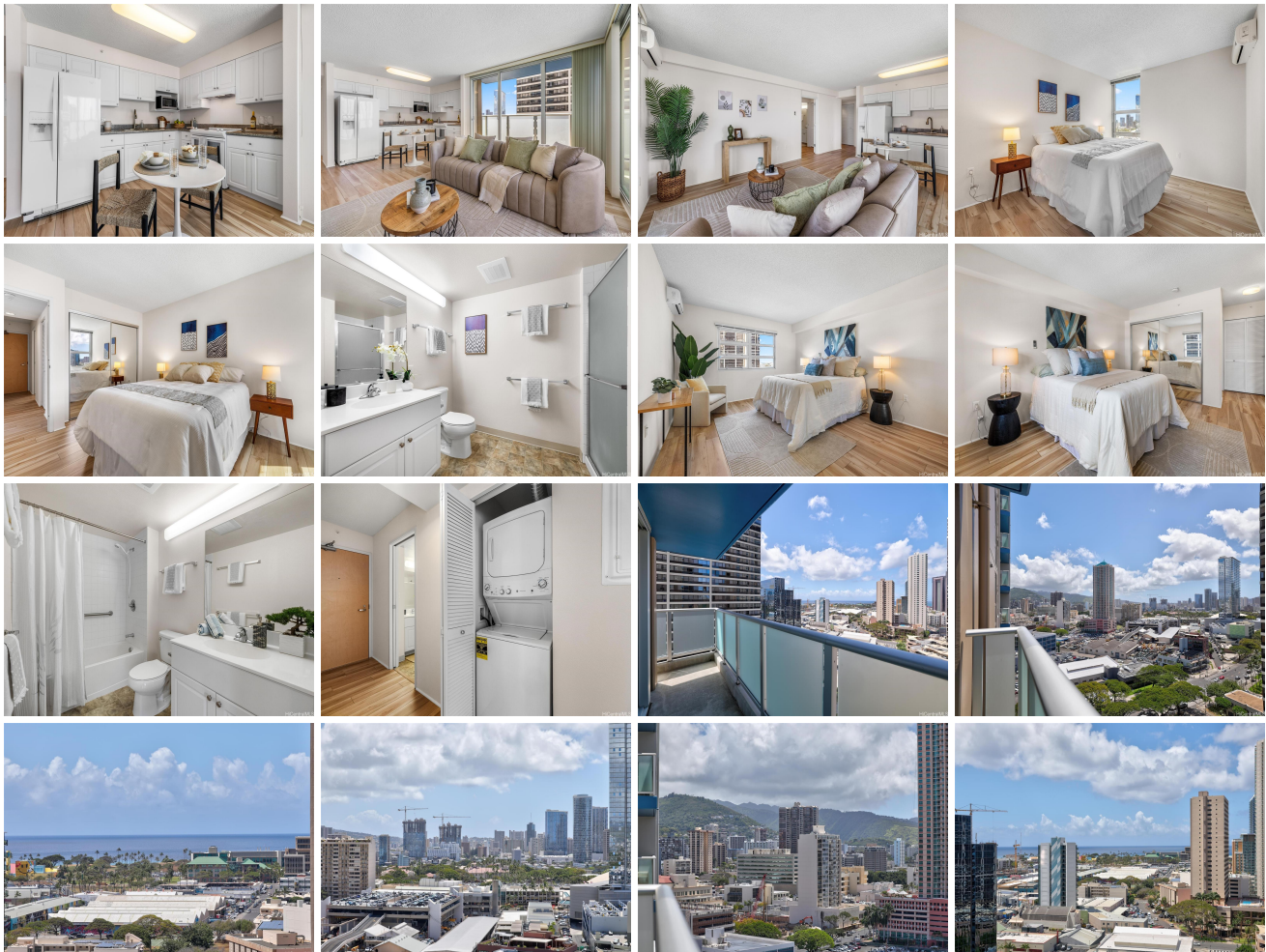


**801 South St 801 South Street Unit 1922, Honolulu 96813 \* 801 South St \* \$799,000 \***

**Originally \$810,000**

Beds: <b>2</b>	MLS#: <b>202408164, FS</b>	Year Built: <b>2017</b>
Bath: <b>2/0</b>	Status: <b>Active</b>	Remodeled:
Living Sq. Ft.: <b>876</b>	List Date & DOM: <b>04-12-2024 &amp; 34</b>	Total Parking: <b>1</b>
Land Sq. Ft.: <b>0</b>	Condition: <b>Excellent, Above Average</b>	<a href="#">Assessed Value</a>
Lanai Sq. Ft.: <b>103</b>	Frontage:	Building: <b>\$732,300</b>
Sq. Ft. Other: <b>0</b>	Tax/Year: <b>\$187/2024</b>	Land: <b>\$26,800</b>
Total Sq. Ft. <b>979</b>	Neighborhood: <b>Kakaako</b>	Total: <b>\$759,100</b>
Maint./Assoc. <b>\$437 / \$0</b>	<a href="#">Flood Zone</a> : <b>Zone X - Tool</b>	Stories / CPR: <b>21+ / No</b>
Parking: <b>Covered - 1, Guest, Secured Entry, Street, Unassigned</b>	Frontage:	
<a href="#">Zoning</a> : <b>Kak - Kakaako Community Development Project</b>	View: <b>City, Coastline, Mountain, Ocean</b>	

**Public Remarks:** Modern Metro Marvel! Your urban haven awaits at 801 South in Kakaako with expansive breathtaking views of Honolulu's city skyline, mountains, and ocean views from this beautiful corner-end unit with large wrap around L-shaped lanai. Enjoy the natural light that brightens this spacious 2-bedroom / 2-bath unit in "B" building with split A/C throughout, luxury vinyl plank flooring installed in 2022, W/D in hallway closet, equipped with fire sprinklers, and double pane windows. Built in 2017 and pet friendly, you'll appreciate the low maintenance fees and modern conveniences with 24-hour security, secured entry, guest parking, EV charging station, on-site management, bike and surf board storage, designated car wash area, trash chute, port cochere off South Street for convenient pick-up/drop off and a recreation room! The city is your oyster, conveniently located near Downtown, SALT, Ward Village, and Ala Moana Center, where you can embrace all the excitement and fun of city living! **Sale Conditions:** None **Schools:** , , \* [Request Showing](#), [Photos](#), [History](#), [Maps](#), [Deed](#), [Watch List](#), [Tax Info](#)





Address	Price	Bd & Bth	Living / Avg.	Land   Avg.	Lanai	Occ.	FL	DOM
<a href="#">801 South Street 1922</a>	<b>\$799,000</b>	2 & 2/0	876   \$912	0   \$inf	103	51%	19	34

Address	Tax   Maint.   Ass.	Assessed Land	Assessed Building	Assessed Total	Ratio	Year & Remodeled
<a href="#">801 South Street 1922</a>	\$187   \$437   \$0	\$26,800	\$732,300	\$759,100	105%	2017 & NA

[801 South Street 1922](#) - MLS#: [202408164](#) - Original price was \$810,000 - Modern Metro Marvel! Your urban haven awaits at 801 South in Kakaako with expansive breathtaking views of Honolulu's city skyline, mountains, and ocean views from this beautiful corner-end unit with large wrap around L-shaped lanai. Enjoy the natural light that brightens this spacious 2-bedroom / 2-bath unit in "B" building with split A/C throughout, luxury vinyl plank flooring installed in 2022, W/D in hallway closet, equipped with fire sprinklers, and double pane windows. Built in 2017 and pet friendly, you'll appreciate the low maintenance fees and modern conveniences with 24-hour security, secured entry, guest parking, EV charging station, on-site management, bike and surf board storage, designated car wash area, trash chute, port cochere off South Street for convenient pick-up/drop off and a recreation room! The city is your oyster, conveniently located near Downtown, SALT, Ward Village, and Ala Moana Center, where you can embrace all the excitement and fun of city living! **Region:** Metro **Neighborhood:** Kakaako **Condition:** Excellent, Above Average **Parking:** Covered - 1, Guest, Secured Entry, Street, Unassigned **Total Parking:** 1 **View:** City, Coastline, Mountain, Ocean **Frontage:** Pool: **Zoning:** Kak - Kakaako Community Development Project **Sale Conditions:** None **Schools:** , , \* [Request Showing](#), [Photos](#), [History](#), [Maps](#), [Deed](#), [Watch List](#), [Tax Info](#)

DOM = Days on Market, Occ. = Occupancy, FL = Floor Number