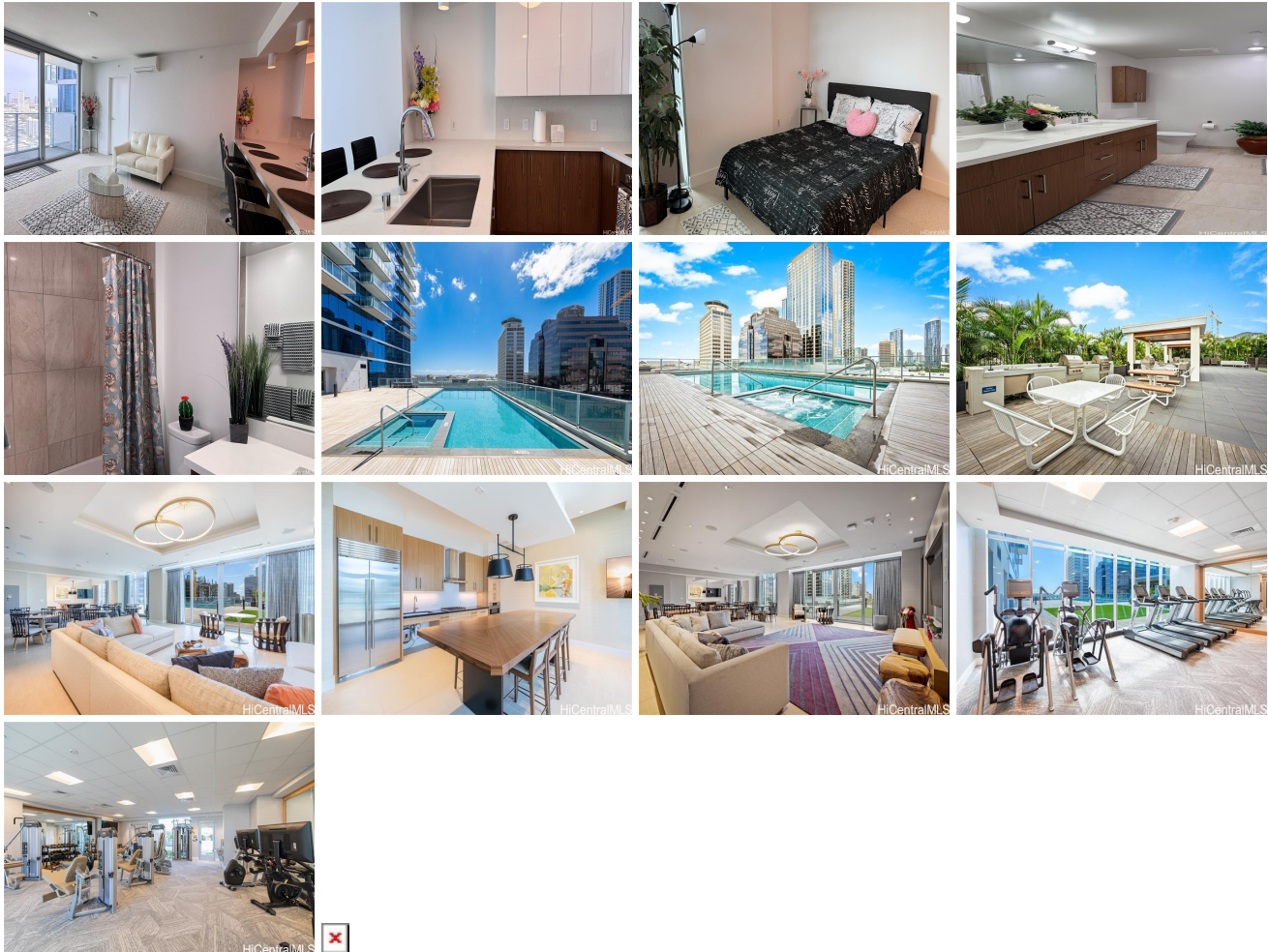


**AZURE ALA MOANA 629 Keeaumoku Street Unit 2410, Honolulu 96814 \* AZURE ALA****MOANA \* \$1,250,000**

|   |   |                                |
|---|---|--------------------------------|
| Beds: <b>2</b>  | MLS#: <b>202408277, FS</b>                        | Year Built: <b>2021</b>        |
| Bath: <b>2/0</b>  | Status: <b>Active</b>                             | Remodeled:                     |
| Living Sq. Ft.: <b>916</b>  | List Date & DOM: <b>04-18-2024 &amp; 28</b>       | Total Parking: <b>2</b>        |
| Land Sq. Ft.: <b>0</b>  | Condition: <b>Excellent</b>                       | <a href="#">Assessed Value</a> |
| Lanai Sq. Ft.: <b>73</b>  | Frontage: <b>Other</b>                            | Building: <b>\$1,112,300</b>   |
| Sq. Ft. Other: <b>0</b>   | Tax/Year: <b>\$305/2023</b>                       | Land: <b>\$37,500</b>          |
| Total Sq. Ft. <b>989</b>  | Neighborhood: <b>Holiday Mart</b>                 | Total: <b>\$1,149,800</b>      |
| Maint./Assoc. <b>\$878 / \$0</b>                                  | <a href="#">Flood Zone</a> : <b>Zone X - Tool</b> | Stories / CPR: <b>21+ / No</b> |
| Parking: <b>Assigned, Covered - 1, Covered - 2, Secured Entry</b> | Frontage: <b>Other</b>                            |                                |

**Zoning: 33 - BMX-3 Community Business M****View: City, Mountain, Ocean, Sunset**

**Public Remarks:** Azure Ala Moana, one of the newest upscale buildings in Midtown. Enjoy resort style living in the heart of the city, including concierge service! Featuring 2 beds, 2 baths, and 2 full size covered parking stalls with locked storage cabinets. Beautiful city, mountain, Diamond Head and ocean views. Bright, cool unit, enjoy morning sunrise. High floor unit, with open kitchen. Beautifully situated with opposite-side bedrooms allowing for the utmost privacy and independent living. Outdoor features invite you to enjoy the pool/ whirlpool, BBQ pavilion, cabanas, club lounge and more! Additionally, there are four guest suites, a movie theater, fitness center and dog park. Easy walking to close by Ala Moana shopping center and Ala Moana Beach Park. Conveniently located across from Walmart, Sam's Club and endless shopping and restaurant opportunities. A must see!! **Sale Conditions:** None **Schools:** [Kaahumanu](#), [Stevenson](#), [Mckinley](#) \* [Request Showing](#), [Photos](#), [History](#), [Maps](#), [Deed](#), [Watch List](#), [Tax Info](#)



| Address                                   | Price                       | Bd & Bth | Living / Avg. | Land   Avg. | Lanai | Occ. | FL | DOM |
|---|-----------------------------|----------|---------------|-------------|-------|------|----|-----|
| <a href="#">629 Keeaumoku Street 2410</a> | <a href="#">\$1,250,000</a> | 2 & 2/0  | 916   \$1,365 | 0   \$inf   | 73    | 72%  | 24 | 28  |

| Address | Tax   Maint.   Ass. | Assessed Land | Assessed Building | Assessed Total | Ratio | Year & Remodeled |
|---------|---------------------|---------------|-------------------|----------------|-------|------------------|
|---------|---------------------|---------------|-------------------|----------------|-------|------------------|

|   |                     |          |             |             |      |           |
|---|---------------------|----------|-------------|-------------|------|-----------|
| <a href="#">629 Keeaumoku Street 2410</a> | \$305   \$878   \$0 | \$37,500 | \$1,112,300 | \$1,149,800 | 109% | 2021 & NA |
|---|---------------------|----------|-------------|-------------|------|-----------|

[629 Keeaumoku Street 2410](#) - MLS#: [202408277](#) - Azure Ala Moana, one of the newest upscale buildings in Midtown. Enjoy resort style living in the heart of the city, including concierge service! Featuring 2 beds, 2 baths, and 2 full size covered parking stalls with locked storage cabinets. Beautiful city, mountain, Diamond Head and ocean views. Bright, cool unit, enjoy morning sunrise. High floor unit, with open kitchen. Beautifully situated with opposite-side bedrooms allowing for the utmost privacy and independent living. Outdoor features invite you to enjoy the pool/ whirlpool, BBQ pavilion, cabanas, club lounge and more! Additionally, there are four guest suites, a movie theater, fitness center and dog park. Easy walking to close by Ala Moana shopping center and Ala Moana Beach Park. Conveniently located across from Walmart, Sam's Club and endless shopping and restaurant opportunities. A must see!! **Region:** Metro **Neighborhood:** Holiday Mart **Condition:** Excellent **Parking:** Assigned, Covered - 1, Covered - 2, Secured Entry **Total Parking:** 2 **View:** City, Mountain, Ocean, Sunset **Frontage:** Other **Pool:** **Zoning:** 33 - BMX-3 Community Business M **Sale Conditions:** None **Schools:** [Kaahumanu](#), [Stevenson](#), [Mckinley](#) \* [Request Showing](#), [Photos](#), [History](#), [Maps](#), [Deed](#), [Watch List](#), [Tax Info](#)

DOM = Days on Market, Occ. = Occupancy, FL = Floor Number