

91-6221 Kapolei Parkway Unit 106, Ewa Beach 96706 * * \$900,000

Beds: **3**

MLS#: **202408278, FS**

Year Built: **2016**

Bath: **2/1**

Status: **Active Under Contract**

Remodeled:

Living Sq. Ft.: **1,526**

List Date & DOM: **04-15-2024 & 9**

Total Parking: **4**

Land Sq. Ft.: **9,776**

Condition: **Excellent, Above Average**

[Assessed Value](#)

Lanai Sq. Ft.: **0**

Frontage:

Building: **\$416,000**

Sq. Ft. Other: **0**

Tax/Year: **\$214/2023**

Land: **\$526,300**

Total Sq. Ft. **1,526**

Neighborhood: **Ewa Gen Parkside**

Total: **\$942,300**

Maint./Assoc. **\$0 / \$0**

[Flood Zone](#): **Zone D - Tool**

Stories / CPR: **Two / Yes**

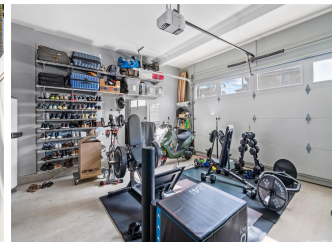
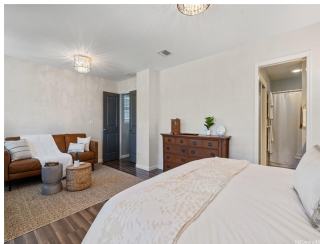
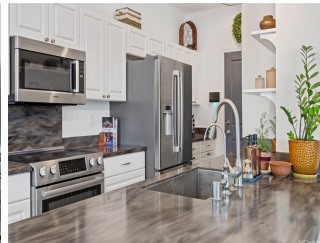
Parking: **3 Car+, Driveway, Garage**

Frontage:

[Zoning](#): **11 - A-1 Low Density Apartment**

View: **None**

Public Remarks: Don't miss your chance to own the Ewa Gentry Parkside Model Home! This already immaculate home has been improved with the addition of 11 solar panels and Tesla solar battery, perimeter termite bait stations, home water softener and reverse osmosis system, additional shelving in the massive pantry and garage, improved primary closet, Vivint security system, nest thermostat and a recent coat of interior paint. Living in this home, you will be within a short distance of all the shops you need and the new Wai Kai Lagoon! Interior features ceramic tile & laminate flooring, Bosch stainless steel appliances, plantation shutters throughout the home, massive primary suite, and a built-in home office space. Enjoy leisure time within the fenced-in, large back yard with tranquil water features. The home is on a corner lot, close to plenty of visitor parking spaces. Parkside's community pool is perfect for entertaining guests for low maintenance and association fees! **Sale Conditions:** None **Schools:** [Ewa Beach](#), [Ewa Makai](#), [Campbell](#) * [Request Showing](#), [Photos](#), [History](#), [Maps](#), [Deed](#), [Watch List](#), [Tax Info](#)





Address	Price	Bd & Bth	Living / Avg.	Land Avg.	Lanai	Occ.	FL	DOM
91-6221 Kapolei Parkway 106	\$900,000	3 & 2/1	1,526 \$590	9,776 \$92	0	0%	0	9

Address	Tax Maint. Ass.	Assessed Land	Assessed Building	Assessed Total	Ratio	Year & Remodeled
91-6221 Kapolei Parkway 106	\$214 \$0 \$0	\$526,300	\$416,000	\$942,300	96%	2016 & NA

[91-6221 Kapolei Parkway 106](#) - MLS#: [202408278](#) - Don't miss your chance to own the Ewa Gentry Parkside Model Home! This already immaculate home has been improved with the addition of 11 solar panels and Tesla solar battery, perimeter termite bait stations, home water softener and reverse osmosis system, additional shelving in the massive pantry and garage, improved primary closet, Vivint security system, nest thermostat and a recent coat of interior paint. Living in this home, you will be within a short distance of all the shops you need and the new Wai Kai Lagoon! Interior features ceramic tile & laminate flooring, Bosch stainless steel appliances, plantation shutters throughout the home, massive primary suite, and a built-in home office space. Enjoy leisure time within the fenced-in, large back yard with tranquil water features. The home is on a corner lot, close to plenty of visitor parking spaces. Parkside's community pool is perfect for entertaining guests for low maintenance and association fees! **Region:** Ewa Plain **Neighborhood:** Ewa Gen Parkside **Condition:** Excellent, Above Average **Parking:** 3 Car+, Driveway, Garage **Total Parking:** 4 **View:** None **Frontage:** **Pool:** Community Association Pool **Zoning:** 11 - A-1 Low Density Apartment **Sale Conditions:** None **Schools:** [Ewa Beach](#), [Ewa Makai](#), [Campbell](#) * [Request Showing](#), [Photos](#), [History](#), [Maps](#), [Deed](#), [Watch List](#), [Tax Info](#)

DOM = Days on Market, Occ. = Occupancy, FL = Floor Number