

**Palms Inc 431 Nahua Street Unit 601, Honolulu 96815 \* Palms Inc \* \$569,888**

Beds: **2**

MLS#: **202408291, FS**

Year Built: **1968**

Bath: **2/0**

Status: **Active Under Contract**

Remodeled:

Living Sq. Ft.: **824**

List Date & DOM: **04-16-2024 & 21**

Total Parking: **1**

Land Sq. Ft.: **0**

Condition: **Average**

[Assessed Value](#)

Lanai Sq. Ft.: **82**

Frontage:

Building: **\$434,300**

Sq. Ft. Other: **0**

Tax/Year: **\$146/2023**

Land: **\$67,300**

Total Sq. Ft. **906**

Neighborhood: **Waikiki**

Total: **\$501,600**

Maint./Assoc. **\$1,049 / \$0**

[Flood Zone](#): **Zone AE - Tool**

Stories / CPR: **15-20 / No**

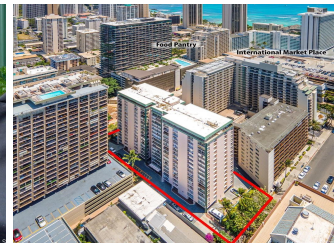
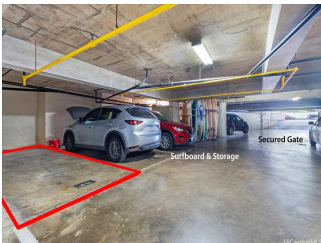
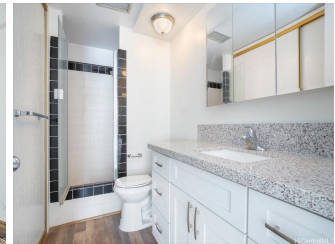
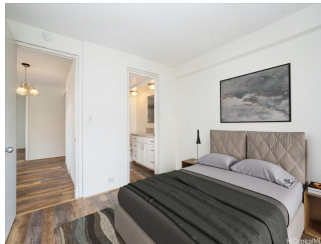
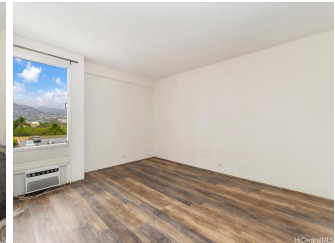
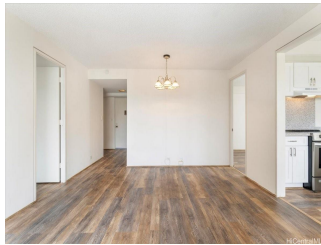
Parking: **Assigned, Covered - 1**

Frontage:

[Zoning](#): **X2 - Apartment Precinct**

View: **City, Marina/Canal, Mountain**

**Public Remarks:** Best Value!! Don't miss this opportunity to own a 2BR/2BA/1COVERED PARKING condo in the heart of WAIKIKI!!! Enjoy the ultimate urban lifestyle just steps away from the International Market Place, Waikiki Market, upcoming Target, and the world-famous Waikiki Beach! The Palms Inc offers secure mid-rise living with amenities including a swimming pool, BBQ grill, and pet-friendly environment. This unit is situated on the cooler side of the building, boasting an efficient floor plan and a spacious open lanai with refreshing breezes and views of Ala Wai canal and mountains. Features include washer/dryer, stylish vinyl flooring, and newer cabinets. The monthly maintenance fee is \$1048.98, covering Sewer, Water, Electricity, Internet, and Cable TV. Additionally, the unit has three window AC units with an extra \$165/month AC fee. Please note that some photos have been virtually enhanced. **Sale Conditions:** None **Schools:** , , \* [Request Showing](#), [Photos](#), [History](#), [Maps](#), [Deed](#), [Watch List](#), [Tax Info](#)



Address	Price	Bd & Bth	Living / Avg.	Land   Avg.	Lanai	Occ.	FL	DOM
<a href="#">431 Nahua Street 601</a>	<a href="#">\$569,888</a>	2 & 2/0	824   \$692	0   \$inf	82	55%	6	21

Address	Tax   Maint.   Ass.	Assessed Land	Assessed Building	Assessed Total	Ratio	Year & Remodeled
<a href="#">431 Nahua Street 601</a>	\$146   \$1,049   \$0	\$67,300	\$434,300	\$501,600	114%	1968 & NA

[431 Nahua Street 601](#) - MLS#: [202408291](#) - Best Value!! Don't miss this opportunity to own a 2BR/2BA/1COVERED PARKING condo in the heart of WAIKIKI!!! Enjoy the ultimate urban lifestyle just steps away from the International Market Place, Waikiki Market, upcoming Target, and the world-famous Waikiki Beach! The Palms Inc offers secure mid-rise living with amenities including a swimming pool, BBQ grill, and pet-friendly environment. This unit is situated on the cooler side of the building, boasting an efficient floor plan and a spacious open lanai with refreshing breezes and views of Ala Wai canal and mountains. Features include washer/dryer, stylish vinyl flooring, and newer cabinets. The monthly maintenance fee is \$1048.98, covering Sewer, Water, Electricity, Internet, and Cable TV. Additionally, the unit has three window AC units with an extra \$165/month AC fee. Please note that some photos have been virtually enhanced. **Region:** Metro **Neighborhood:** Waikiki **Condition:** Average **Parking:** Assigned, Covered - 1 **Total Parking:** 1 **View:** City, Marina/Canal, Mountain **Frontage:** Pool: **Zoning:** X2 - Apartment Precinct **Sale Conditions:** None **Schools:** , , \* [Request Showing](#), [Photos](#), [History](#), [Maps](#), [Deed](#), [Watch List](#), [Tax Info](#)

DOM = Days on Market, Occ. = Occupancy, FL = Floor Number