

Mott-Smith Laniloa 1717 Mott Smith Drive Unit 3202, Honolulu 96822 * Mott-Smith Laniloa

*** \$533,000**

Beds: **2**

MLS#: **202408319, FS**

Year Built: **1976**

Bath: **2/0**

Status: **Active Under Contract**

Remodeled:

Living Sq. Ft.: **882**

List Date & DOM: **04-15-2024 & 7**

Total Parking: **2**

Land Sq. Ft.: **113,082**

Condition: **Average**

[Assessed Value](#)

Lanai Sq. Ft.: **275**

Frontage:

Building: **\$486,200**

Sq. Ft. Other: **0**

Tax/Year: **\$169/2023**

Land: **\$63,200**

Total Sq. Ft. **1,157**

Neighborhood: **Makiki Area**

Total: **\$549,400**

Maint./Assoc. **\$1,579 / \$0**

[Flood Zone](#): **Zone X - Tool**

Stories / CPR: **21+ / No**

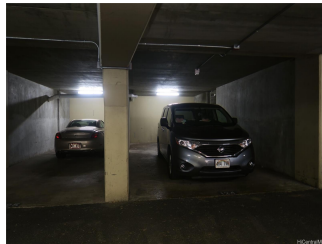
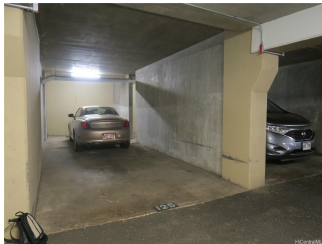
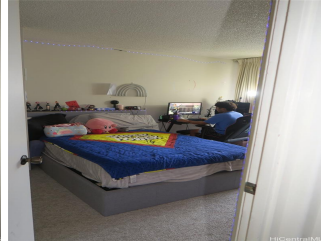
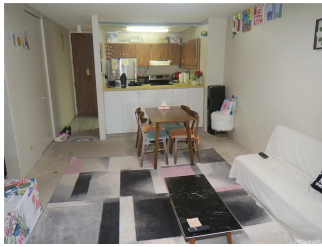
Parking: **Covered - 2, Guest, Tandem**

Frontage:

[Zoning](#): **12 - A-2 Medium Density Apartme**

View: **City, Mountain, Sunset**

Public Remarks: Rarely available "Flair" two bedroom, two bath corner suite with special features of extra deep lanais plus two tandem parking stalls which can accommodate 4 cars. Beautiful mountain/city/Punchbowl views from the 32nd floor. Lanais are tiled plus the livingroom lanai has electric metal awnings. Recently renovated amenities are truly resort-style with modern infinity-edge pool, extra large hot tub, resurfaced tennis court (with pickleball lines for multi-use), BBQ grills, children's pool, meeting room, and lush landscaping. Freeway access is just minutes away plus the Honolulu business district, Ala Moana and Waikiki just a short drive away. **Sale Conditions:** None **Schools:** [Lincoln](#), [Stevenson](#), [Roosevelt](#) * [Request Showing, Photos, History, Maps, Deed, Watch List, Tax Info](#)



Address	Price	Bd & Bth	Living / Avg.	Land Avg.	Lanai	Occ.	FL	DOM
1717 Mott Smith Drive 3202	\$533,000	2 & 2/0	882 \$604	113,082 \$5	275	65%	32	7

Address	Tax Maint. Ass.	Assessed Land	Assessed Building	Assessed Total	Ratio	Year & Remodeled
1717 Mott Smith Drive 3202	\$169 \$1,579 \$0	\$63,200	\$486,200	\$549,400	97%	1976 & NA

[1717 Mott Smith Drive 3202](#) - MLS#: [202408319](#) - Rarely available "Flair" two bedroom, two bath corner suite with special features of extra deep lanais plus two tandem parking stalls which can accommodate 4 cars. Beautiful mountain/city/Punchbowl views from the 32nd floor. Lanais are tiled plus the livingroom lanai has electric metal awnings. Recently renovated amenities are truly resort-style with modern infinity-edge pool, extra large hot tub, resurfaced tennis court (with pickleball lines for multi-use), BBQ grills, children's pool, meeting room, and lush landscaping. Freeway access is just minutes away plus the Honolulu business district, Ala Moana and Waikiki just a short drive away. **Region:** Metro **Neighborhood:** Makiki Area **Condition:** Average **Parking:** Covered - 2, Guest, Tandem **Total Parking:** 2 **View:** City, Mountain, Sunset **Frontage:** **Pool:** **Zoning:** 12 - A-2 Medium Density Apartme **Sale Conditions:** None **Schools:** [Lincoln, Stevenson, Roosevelt](#) * [Request Showing](#), [Photos](#), [History](#), [Maps](#), [Deed](#), [Watch List](#), [Tax Info](#)

DOM = Days on Market, Occ. = Occupancy, FL = Floor Number