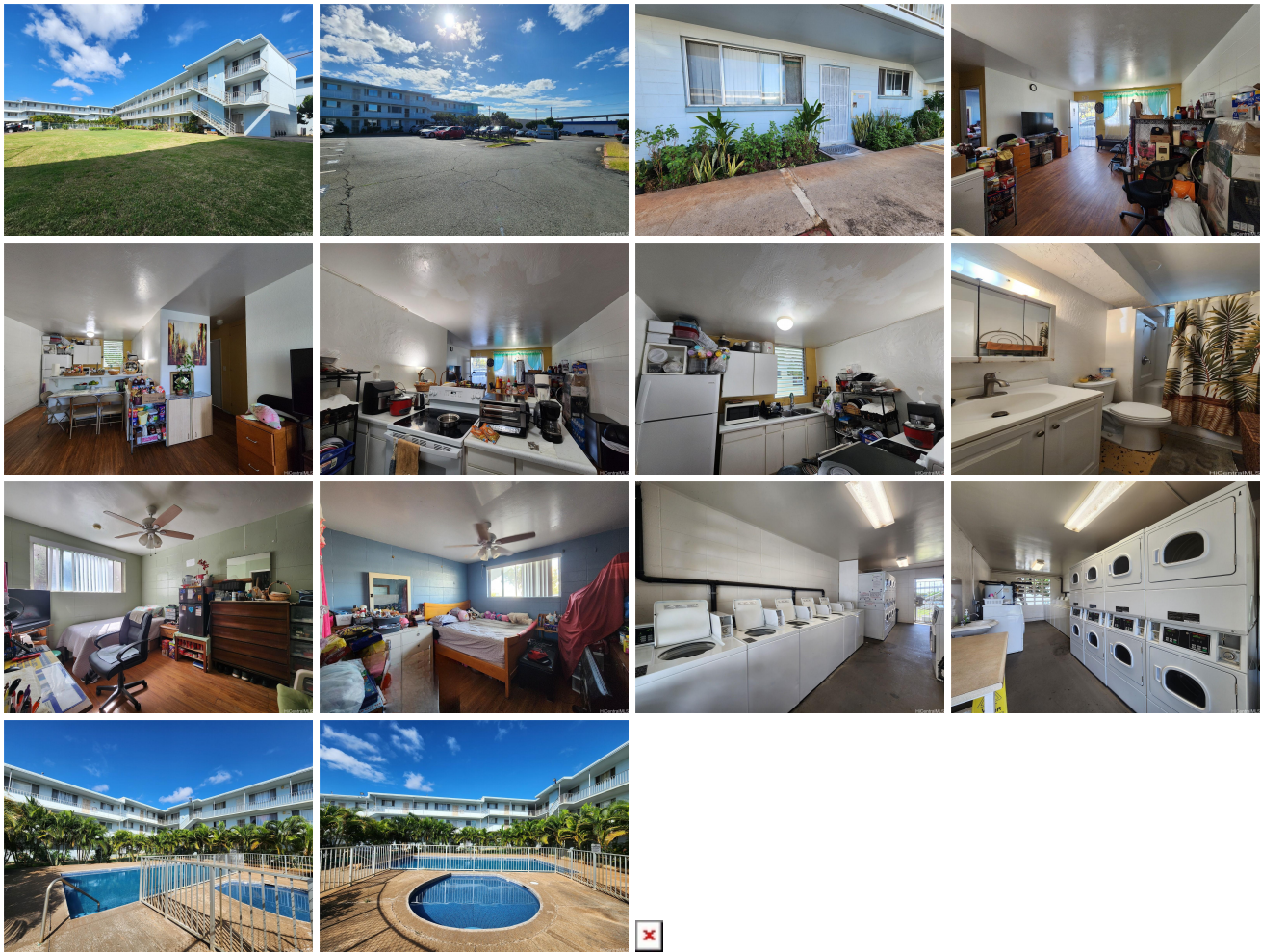


## KUNIA PALMS 94-010 Leolua Street Unit A119, Waipahu 96797 \* KUNIA PALMS \* \$360,000

Beds: <b>2</b>	MLS#: <b>202408386, FS</b>	Year Built: <b>1969</b>
Bath: <b>1/0</b>	Status: <b>Active</b>	Remodeled:
Living Sq. Ft.: <b>705</b>	List Date & DOM: <b>04-20-2024 &amp; 27</b>	Total Parking: <b>1</b>
Land Sq. Ft.: <b>60,853</b>	Condition: <b>Average</b>	<a href="#">Assessed Value</a>
Lanai Sq. Ft.: <b>0</b>	Frontage: <b>Other</b>	Building: <b>\$241,000</b>
Sq. Ft. Other: <b>0</b>	Tax/Year: <b>\$107/2024</b>	Land: <b>\$127,300</b>
Total Sq. Ft. <b>705</b>	Neighborhood: <b>Waipahu-lower</b>	Total: <b>\$368,300</b>
Maint./Assoc. <b>\$460 / \$0</b>	<a href="#">Flood Zone</a> : <b>Zone D - Tool</b>	Stories / CPR: <b>Three / No</b>
Parking: <b>Assigned, Open - 1, Street</b>	Frontage: <b>Other</b>	
<a href="#">Zoning</a> : <b>12 - A-2 Medium Density Apartme</b>	View: <b>Other</b>	

**Public Remarks:** Don't miss this rare opportunity to own a ground floor unit at Kunia Palms! This conveniently located property features a pool on-site and a community laundry room for your convenience. Situated directly across from Waipahu Town Center, you'll have easy access to a plethora of shopping and dining options, as well as being just a block away from the rail station. With one assigned parking space on the property, this unit offers both comfort and practicality. Currently tenant-occupied on a month-to-month lease. Water and sewer are submetered for each unit and billed thru the owners monthly maintenance fee statement. **Sale Conditions:** None **Schools:** [Honowai](#), [Waipahu](#), [Waipahu](#) \* [Request Showing](#), [Photos](#), [History](#), [Maps](#), [Deed](#), [Watch List](#), [Tax Info](#)



Address	Price	Bd & Bth	Living / Avg.	Land   Avg.	Lanai	Occ.	FL	DOM
<a href="#">94-010 Leolua Street A119</a>	<a href="#">\$360,000</a>	2 & 1/0	705   \$511	60,853   \$6	0	63%	1	27

Address	Tax   Maint.   Ass.	Assessed Land	Assessed Building	Assessed Total	Ratio	Year & Remodeled
<a href="#">94-010 Leolua Street A119</a>	\$107   \$460   \$0	\$127,300	\$241,000	\$368,300	98%	1969 & NA

[94-010 Leolua Street A119](#) - MLS#: [202408386](#) - Don't miss this rare opportunity to own a ground floor unit at Kunia Palms! This conveniently located property features a pool on-site and a community laundry room for your convenience. Situated directly across from Waipahu Town Center, you'll have easy access to a plethora of shopping and dining options, as well as being just a block away from the rail station. With one assigned parking space on the property, this unit offers both comfort and practicality. Currently tenant-occupied on a month-to-month lease. Water and sewer are submetered for each unit and billed thru the owners monthly maintenance fee statement. **Region:** Waipahu **Neighborhood:** Waipahu-lower **Condition:** Average **Parking:** Assigned, Open - 1, Street **Total Parking:** 1 **View:** Other **Frontage:** Other **Pool:** **Zoning:** 12 - A-2 Medium Density Apartme **Sale Conditions:** None **Schools:** [Honowai](#), [Waipahu](#), [Waipahu](#) \* [Request Showing](#), [Photos](#), [History](#), [Maps](#), [Deed](#), [Watch List](#), [Tax Info](#)

DOM = Days on Market, Occ. = Occupancy, FL = Floor Number