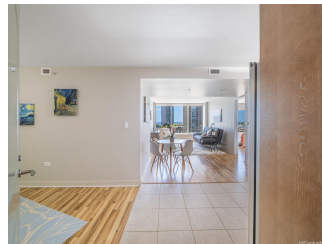


Pacifica Honolulu 1009 Kapiolani Boulevard Unit 1505, Honolulu 96814 * Pacifica Honolulu

*** \$865,000 * Originally \$889,000**

Beds: 2	MLS#: 202408387, FS	Year Built: 2011
Bath: 2/0	Status: Active	Remodeled:
Living Sq. Ft.: 889	List Date & DOM: 04-16-2024 & 34	Total Parking: 2
Land Sq. Ft.: 0	Condition: Above Average	Assessed Value
Lanai Sq. Ft.: 0	Frontage:	Building: \$773,500
Sq. Ft. Other: 0	Tax/Year: \$243/2023	Land: \$59,800
Total Sq. Ft. 889	Neighborhood: Kakaako	Total: \$833,300
Maint./Assoc. \$1,014 / \$0	Flood Zone : Zone AE - Tool	Stories / CPR: 21+ / No
Parking: Assigned, Covered - 2, Tandem	Frontage:	
Zoning : Kak - Kakaako Community Development Project	View: City, Ocean	

Public Remarks: Live, Work, Play, Bathe & Shop within a 10 block radius in the heart of Honolulu's thriving Kaka'ako Neighborhood. World-Class Beach parks, Premium Grocery Stores, Boat Harbors, High-End restaurants, Multiple Premium Shops, Live Entertainment, Bars, Sports Centers, Schools & places of Worship, all lie within minutes of the most desirable premium urban buildings in Honolulu: the stunning, all-Glass Pacifica Honolulu. Inside this 899 Sq Ft, 2 Bedroom, 1 Flex Room, 2 Bath Condo you'll enjoy the modern comforts: Premium Cabinets & Appliances, to Central Air Conditioning, Washer/Dryer, Tiled & Vinyl Flooring. Designed with maximal privacy in mind, All 3 rooms are placed at opposite ends, while each bedroom & living room area has its own Hurricane-Impact windows, with Ocean & City Sky Scraper views day and night. The 85 Sq Ft Flex Room functions as a Study, Office, Yoga, Exercise, Dining Room and more! High-Speed Elevators will take you to a beautiful lobby, a 5th Floor Recreation Deck with Resort amenities such as Swimming Pool, Hot Tub, Sauna, BBQ Area, Outdoor Lounge Area, 2 Movie Theatres, Fitness Center, while also offering a Tandem Parking Stall with additional Guest parking. **Sale Conditions:** None **Schools:** [Kaahumanu](#), [Washington](#), [Mckinley](#) * [Request Showing](#), [Photos](#), [History](#), [Maps](#), [Deed](#), [Watch List](#), [Tax Info](#)



Address	Price	Bd & Bth	Living / Avg.	Land Avg.	Lanai	Occ.	FL	DOM
1009 Kapiolani Boulevard 1505	\$865,000	2 & 2/0	889 \$973	0 \$inf	0	60%	15	34

Address	Tax Maint. Ass.	Assessed Land	Assessed Building	Assessed Total	Ratio	Year & Remodeled
1009 Kapiolani Boulevard 1505	\$243 \$1,014 \$0	\$59,800	\$773,500	\$833,300	104%	2011 & NA

[1009 Kapiolani Boulevard 1505](#) - MLS#: [202408387](#) - Original price was \$889,000 - Live, Work, Play, Bathe & Shop within a 10 block radius in the heart of Honolulu's thriving Kaka'ako Neighborhood. World-Class Beach parks, Premium Grocery Stores, Boat Harbors, High-End restaurants, Multiple Premium Shops, Live Entertainment, Bars, Sports Centers, Schools & places of Worship, all lie within minutes of the most desirable premium urban buildings in Honolulu: the stunning, all-Glass Pacifica Honolulu. Inside this 899 Sq Ft, 2 Bedroom, 1 Flex Room, 2 Bath Condo you'll enjoy the modern comforts: Premium Cabinets & Appliances, to Central Air Conditioning, Washer/Dryer, Tiled & Vinyl Flooring. Designed with maximal privacy in mind, All 3 rooms are placed at opposite ends, while each bedroom & living room area has its own Hurricane-Impact windows, with Ocean & City Sky Scraper views day and night. The 85 Sq Ft Flex Room functions as a Study, Office, Yoga, Exercise, Dining Room and more! High-Speed Elevators will take you to a beautiful lobby, a 5th Floor Recreation Deck with Resort amenities such as Swimming Pool, Hot Tub, Sauna, BBQ Area, Outdoor Lounge Area, 2 Movie Theatres, Fitness Center, while also offering a Tandem Parking Stall with additional Guest parking. **Region:** Metro **Neighborhood:** Kakaako **Condition:** Above Average **Parking:** Assigned, Covered - 2, Tandem **Total Parking:** 2 **View:** City, Ocean **Frontage:** Pool: **Zoning:** Kak - Kakaako Community Development Project **Sale Conditions:** None **Schools:** [Kaahumanu](#), [Washington](#), [Mckinley](#) * [Request Showing](#), [Photos](#), [History](#), [Maps](#), [Deed](#), [Watch List](#), [Tax Info](#)

DOM = Days on Market, Occ. = Occupancy, FL = Floor Number