

Mott-Smith Laniloa 1717 Mott Smith Drive Unit 1413, Honolulu 96822 * Mott-Smith Laniloa

*** \$509,000**

Beds: **2**
Bath: **2/0**
Living Sq. Ft.: **882**
Land Sq. Ft.: **0**
Lanai Sq. Ft.: **174**
Sq. Ft. Other: **0**
Total Sq. Ft. **1,056**
Maint./Assoc. **\$1,579 / \$0**

MLS#: **202408484, FS**
Status: **Active**
List Date & DOM: **04-16-2024 & 29**
Condition: **Average**
Frontage:
Tax/Year: **\$147/2023**
Neighborhood: **Makiki Area**
Flood Zone: Zone X - Tool

Year Built: **1976**
Remodeled:
Total Parking: **2**
Assessed Value
Building: **\$440,900**
Land: **\$63,200**
Total: **\$504,100**
Stories / CPR: **21+ / No**

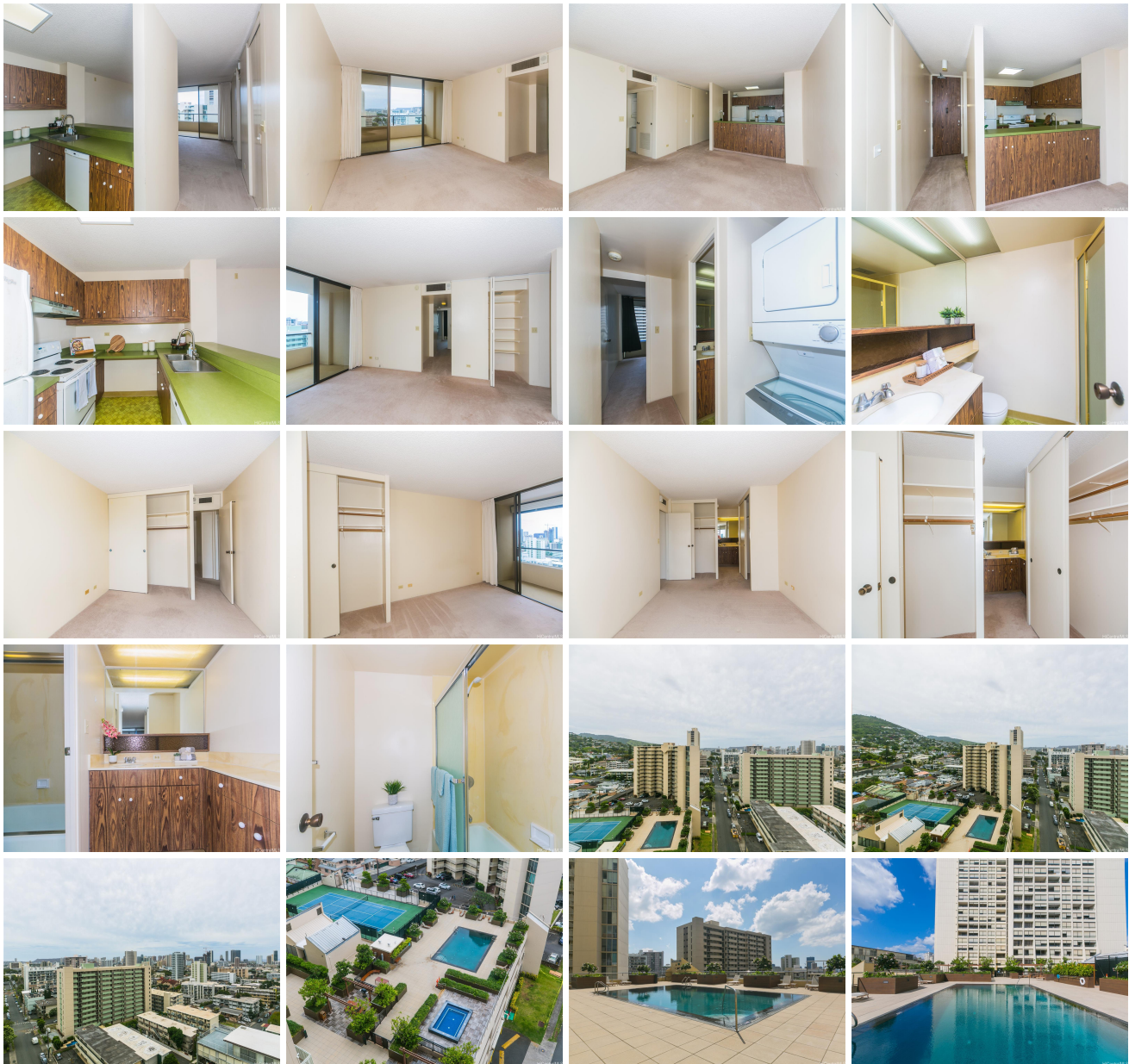
Parking: **Assigned, Covered - 2**

Zoning: 12 - A-2 Medium Density Apartme

Frontage:

View: **City, Diamond Head, Ocean**

Public Remarks: Rarely available corner end-unit in the Mott-Smith Laniloa Condominium! This corner end south facing unit encompasses 2 bedrooms and 2 full bathrooms, along with 2 side by side covered parking stalls. Thoughtfully designed layout with lanais in each room, showcasing views of the Honolulu Skyline, lush green mountains, Diamond Head and the ocean. Mott-Smith Laniloa also offers a recently renovated amenity deck including a pool, pickle ball/tennis courts, BBQ areas, recreation rooms, and more. Conveniently located in Makiki, minutes away from schools, downtown Honolulu, and freeway entrances & exits. **Sale Conditions:** None **Schools:** , , * **Request Showing**, **Photos**, **History**, **Maps**, **Deed**, **Watch List**, **Tax Info**





Address	Price	Bd & Bth	Living / Avg.	Land Avg.	Lanai	Occ.	FL	DOM
1717 Mott Smith Drive 1413	\$509,000	2 & 2/0	882 \$577	0 \$inf	174	64%	14	29

Address	Tax Maint. Ass.	Assessed Land	Assessed Building	Assessed Total	Ratio	Year & Remodeled
1717 Mott Smith Drive 1413	\$147 \$1,579 \$0	\$63,200	\$440,900	\$504,100	101%	1976 & NA

[1717 Mott Smith Drive 1413](#) - MLS#: [202408484](#) - Rarely available corner end-unit in the Mott-Smith Laniloa Condominium! This corner end south facing unit encompasses 2 bedrooms and 2 full bathrooms, along with 2 side by side covered parking stalls. Thoughtfully designed layout with lanais in each room, showcasing views of the Honolulu Skyline, lush green mountains, Diamond Head and the ocean. Mott-Smith Laniloa also offers a recently renovated amenity deck including a pool, pickle ball/tennis courts, BBQ areas, recreation rooms, and more. Conveniently located in Makiki, minutes away from schools, downtown Honolulu, and freeway entrances & exits. **Region:** Metro **Neighborhood:** Makiki Area **Condition:** Average **Parking:** Assigned, Covered - 2 **Total Parking:** 2 **View:** City, Diamond Head, Ocean **Frontage:** Pool: **Zoning:** 12 - A-2 Medium Density Apartme **Sale Conditions:** None **Schools:** , , * [Request Showing](#), [Photos](#), [History](#), [Maps](#), [Deed](#), [Watch List](#), [Tax Info](#)

DOM = Days on Market, Occ. = Occupancy, FL = Floor Number