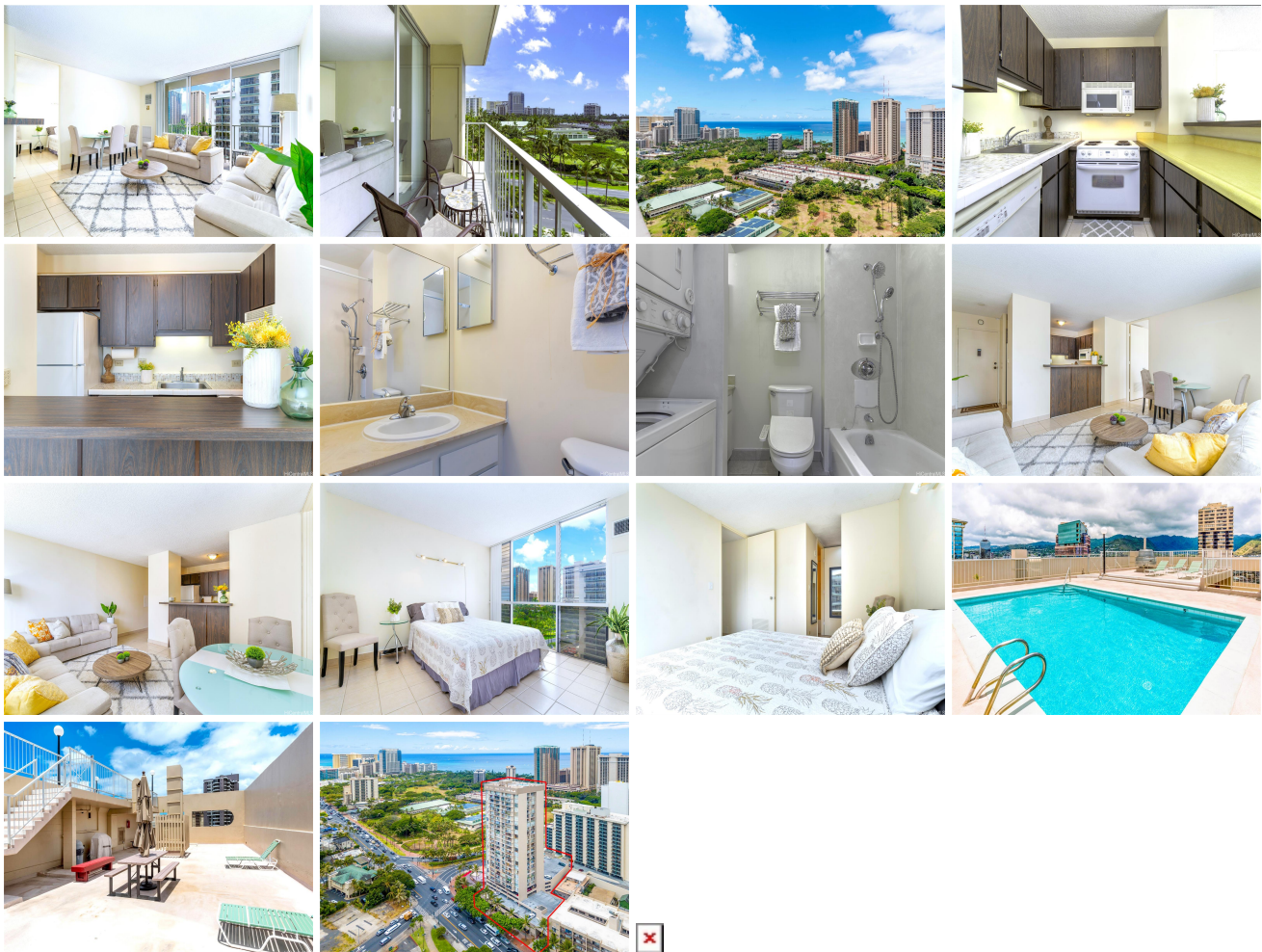


Pavilion At Waikiki 1925 Kalakaua Avenue Unit 1001, Honolulu 96815 * Pavilion At Waikiki

*** \$439,000**

Beds: 1	MLS#: 202408588, FS	Year Built: 1975
Bath: 1/0	Status: Active Under Contract	Remodeled:
Living Sq. Ft.: 546	List Date & DOM: 04-19-2024 & 16	Total Parking: 1
Land Sq. Ft.: 0	Condition: Above Average	Assessed Value
Lanai Sq. Ft.: 52	Frontage: Other	Building: \$369,800
Sq. Ft. Other: 0	Tax/Year: \$115/2023	Land: \$24,200
Total Sq. Ft. 598	Neighborhood: Waikiki	Total: \$393,000
Maint./Assoc. \$915 / \$0	Flood Zone : Zone AO - Tool	Stories / CPR: 21+ / No
Parking: Assigned, Covered - 1, Guest	Frontage: Other	
Zoning : X6 - Resort Mixed Use Precinct	View: City, Ocean	

Public Remarks: Well maintained 1 bedroom, 1bath, 1 Assigned parking located on the most desirable corner unit with ocean, park and city view. The unit w/ floor to ceiling windows. Pavilion at Waikiki is pet-friendly, secured residential high-rise paired with its reputation as one of the best low key condo bldg, close to the essential of the world's famous resort Waikiki location. Maintenance fee includes all utilities except internet. VA approved bldg, it features roof top pool with a viewing deck and store fronts on the ground floor. Close to the beach, restaurants, world class shopping of famous Waikiki, movie theater, Ala Moana and more! Minimal 30 days. Sold As Is. **Sale Conditions:** None **Schools:** [Ala Wai](#), [Washington](#), [Mckinley](#) * [Request Showing](#), [Photos](#), [History](#), [Maps](#), [Deed](#), [Watch List](#), [Tax Info](#)



Address	Price	Bd & Bth	Living / Avg.	Land Avg.	Lanai	Occ.	FL	DOM
1925 Kalakaua Avenue 1001	\$439,000	1 & 1/0	546 \$804	0 \$inf	52	44%	10	16

Address	Tax Maint. Ass.	Assessed Land	Assessed Building	Assessed Total	Ratio	Year & Remodeled
1925 Kalakaua Avenue 1001	\$115 \$915 \$0	\$24,200	\$369,800	\$393,000	112%	1975 & NA

[1925 Kalakaua Avenue 1001](#) - MLS#: [202408588](#) - Well maintained 1 bedroom, 1bath, 1 Assigned parking located on the most desirable corner unit with ocean, park and city view. The unit w/ floor to ceiling windows. Pavilion at Waikiki is pet-friendly, secured residential high-rise paired with its reputation as one of the best low key condo bldg, close to the essential of the world's famous resort Waikiki location. Maintenance fee includes all utilities except internet. VA approved bldg, it features roof top pool with a viewing deck and store fronts on the ground floor. Close to the beach, restaurants, world class shopping of famous Waikiki, movie theater, Ala Moana and more! Minimal 30 days. Sold As Is. **Region:** Metro
Neighborhood: Waikiki **Condition:** Above Average **Parking:** Assigned, Covered - 1, Guest **Total Parking:** 1 **View:** City, Ocean **Frontage:** Other **Pool:** **Zoning:** X6 - Resort Mixed Use Precinct **Sale Conditions:** None **Schools:** [Ala Wai](#), [Washington](#), [Mckinley](#) * [Request Showing](#), [Photos](#), [History](#), [Maps](#), [Deed](#), [Watch List](#), [Tax Info](#)

DOM = Days on Market, Occ. = Occupancy, FL = Floor Number