

Sky Ala Moana West 1388 Kapiolani Boulevard Unit 2502, Honolulu 96814 * Sky Ala Moana

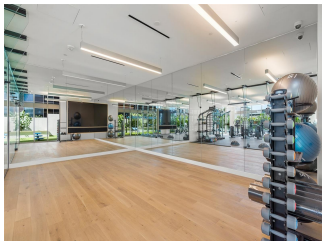
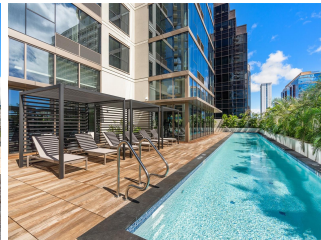
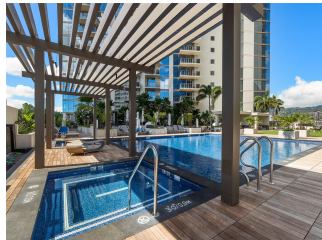
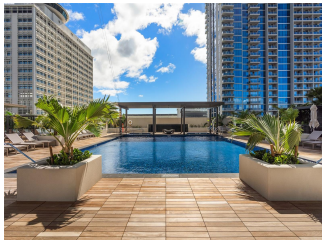
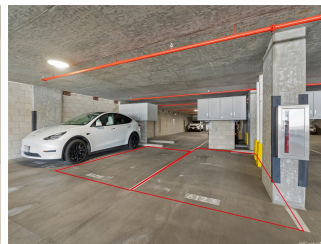
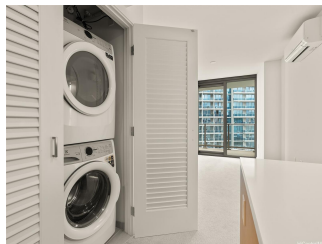
West * \$1,075,000

| | | |
|---|---|--------------------------------|
| Beds: 2 | MLS#: <u>202408623</u>, FS | Year Built: 2023 |
| Bath: 2/0 | Status: Active | Remodeled: |
| Living Sq. Ft.: 822 | List Date & DOM: 04-20-2024 & 27 | Total Parking: 2 |
| Land Sq. Ft.: 0 | Condition: Excellent | Assessed Value |
| Lanai Sq. Ft.: 91 | Frontage: | Building: \$971,000 |
| Sq. Ft. Other: 0 | Tax/Year: \$99/2023 | Land: \$56,400 |
| Total Sq. Ft. 913 | Neighborhood: Holiday Mart | Total: \$1,027,400 |
| Maint./Assoc. \$1,087 / \$0 | Flood Zone : Zone X - Tool | Stories / CPR: 21+ / No |
| Parking: Assigned, Covered - 2, Garage, Guest, Secured Entry | Frontage: | |

[Zoning](#): **33 - BMX-3 Community Business M**

View: **City, Mountain, Ocean**

Public Remarks: Price, Price Price... a Great opportunity to purchase this beautiful 2 bed-2 bath corner unit in urban resort-style oasis in a newly developed Sky Ala Moana West. Brand new building which was just completed late 2023. This high floor, corner 2-bedroom unit features wide range of views of Ocean, City, and Mountain. Fantastic location, conveniently located across from Ala Moana Shopping Center and minutes from the beach and Waikiki. This brand-new residence features sophisticated Bosch appliances, luxury Silestone quartz countertops, Hansgrohe fixtures and American-made cabinetry throughout. Enjoy morning coffee from your large 91sq ft open air lanai. The building offers resort-like amenities features central pool, whirlpool, lap pool, fitness center, poolside cabanas, private dining room, BBQ pavilions and the vibrant outdoor space with playground, two spas with dry and steam sauna and much more. this unit #2502 includes storage space, 2 parking stalls (side-by-side) and an electric outlet at the parking stalls. **Sale Conditions:** None **Schools:** , , * [Request Showing, Photos, History, Maps, Deed, Watch List, Tax Info](#)





| Address | Price | Bd & Bth | Living / Avg. | Land Avg. | Lanai | Occ. | FL | DOM |
|---|-----------------------------|----------|---------------|-------------|-------|------|----|-----|
| 1388 Kapiolani Boulevard 2502 | \$1,075,000 | 2 & 2/0 | 822 \$1,308 | 0 \$inf | 91 | 0% | 25 | 27 |

| Address | Tax Maint. Ass. | Assessed Land | Assessed Building | Assessed Total | Ratio | Year & Remodeled |
|---|----------------------|---------------|-------------------|----------------|-------|------------------|
| 1388 Kapiolani Boulevard 2502 | \$99 \$1,087 \$0 | \$56,400 | \$971,000 | \$1,027,400 | 105% | 2023 & NA |

[1388 Kapiolani Boulevard 2502](#) - MLS#: [202408623](#) - Price, Price Price... a Great opportunity to purchase this beautiful 2 bed-2 bath corner unit in urban resort-style oasis in a newly developed Sky Ala Moana West. Brand new building which was just completed late 2023. This high floor, corner 2-bedroom unit features wide range of views of Ocean, City, and Mountain. Fantastic location, conveniently located across from Ala Moana Shopping Center and minutes from the beach and Waikiki. This brand-new residence features sophisticated Bosch appliances, luxury Silestone quartz countertops, Hansgrohe fixtures and American-made cabinetry throughout. Enjoy morning coffee from your large 91sq ft open air lanai. The building offers resort-like amenities features central pool, whirlpool, lap pool, fitness center, poolside cabanas, private dining room, BBQ pavilions and the vibrant outdoor space with playground, two spas with dry and steam sauna and much more. this unit #2502 includes storage space, 2 parking stalls (side-by-side) and an electric outlet at the parking stalls. **Region:** Metro **Neighborhood:** Holiday Mart **Condition:** Excellent **Parking:** Assigned, Covered - 2, Garage, Guest, Secured Entry **Total Parking:** 2 **View:** City, Mountain, Ocean **Frontage:** **Pool:** **Zoning:** 33 - BMX-3 Community Business M **Sale Conditions:** None **Schools:** , , * [Request Showing](#), [Photos](#), [History](#), [Maps](#), [Deed](#), [Watch List](#), [Tax Info](#)

DOM = Days on Market, Occ. = Occupancy, FL = Floor Number