

**86-196 Moekolu Street, Waianae 96792 \* \* \$890,000**

Beds: **4**  
Bath: **2/1**  
Living Sq. Ft.: **1,764**  
Land Sq. Ft.: **5,114**  
Lanai Sq. Ft.: **576**  
Sq. Ft. Other: **0**  
Total Sq. Ft. **2,340**  
Maint./Assoc. **\$0 / \$0**

MLS#: **202408632, FS**  
Status: **Active**  
List Date & DOM: **04-19-2024 & 29**  
Condition: **Above Average**  
Frontage:  
Tax/Year: **\$224/2023**  
Neighborhood: **Lualualei**  
Flood Zone: **Zone D - Tool**

Year Built: **1992**  
Remodeled:  
Total Parking: **8**  
Assessed Value  
Building: **\$254,700**  
Land: **\$452,600**  
Total: **\$707,300**  
Stories / CPR: **Two / No**

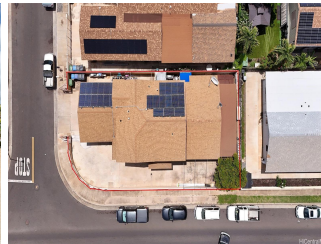
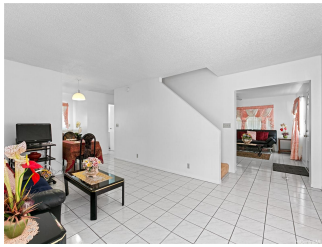
Parking: **3 Car+, Boat, Driveway, Garage**

Zoning: **05 - R-5 Residential District**

Frontage:

View: **Mountain**

**Public Remarks:** Nestled just moments away from the beach, this residence offers a blend of comfort and convenience on a corner lot. It presents an excellent opportunity to personalize and make it your own. Approaching the property, you'll find a spacious driveway capable of accommodating 8+ vehicles and even a boat! There are opportunities for 2-separate living areas with 2-living rooms, a full kitchen, wet bar, and separate entrances. It is functional and offers plenty of space for all endeavors. The property's prime location, ample parking, and potential for outdoor entertaining make it an enticing opportunity to create your own sanctuary. Don't miss out on the chance to turn this house into your home! **Sale Conditions:** None **Schools:** , , \* [Request Showing](#), [Photos](#), [History](#), [Maps](#), [Deed](#), [Watch List](#), [Tax Info](#)





Address	Price	Bd & Bth	Living / Avg.	Land   Avg.	Lanai	Occ.	FL	DOM
<a href="#">86-196 Moekolu Street</a>	<a href="#">\$890,000</a>	4 & 2/1	1,764   \$505	5,114   \$174	576	0%	0	29

Address	Tax   Maint.   Ass.	Assessed Land	Assessed Building	Assessed Total	Ratio	Year & Remodeled
<a href="#">86-196 Moekolu Street</a>	\$224   \$0   \$0	\$452,600	\$254,700	\$707,300	126%	1992 & NA

<p><a href="#">86-196 Moekolu Street</a> - MLS#: <a href="#">202408632</a> - Nestled just moments away from the beach, this residence offers a blend of comfort and convenience on a corner lot. It presents an excellent opportunity to personalize and make it your own. Approaching the property, you'll find a spacious driveway capable of accommodating 8+ vehicles and even a boat! There are opportunities for 2-separate living areas with 2-living rooms, a full kitchen, wet bar, and separate entrances. It is functional and offers plenty of space for all endeavors. The property's prime location, ample parking, and potential for outdoor entertaining make it an enticing opportunity to create your own sanctuary. Don't miss out on the chance to turn this house into your home! <b>Region:</b> Leeward <b>Neighborhood:</b> Lualualei <b>Condition:</b> Above Average <b>Parking:</b> 3 Car+, Boat, Driveway, Garage <b>Total Parking:</b> 8 <b>View:</b> Mountain <b>Frontage:</b> <b>Pool:</b> None <b>Zoning:</b> 05 - R-5 Residential District <b>Sale Conditions:</b> None <b>Schools:</b> , , * <a href="#">Request Showing</a>, <a href="#">Photos</a>, <a href="#">History</a>, <a href="#">Maps</a>, <a href="#">Deed</a>, <a href="#">Watch List</a>, <a href="#">Tax Info</a></p>						
---	--	--	--	--	--	--

DOM = Days on Market, Occ. = Occupancy, FL = Floor Number