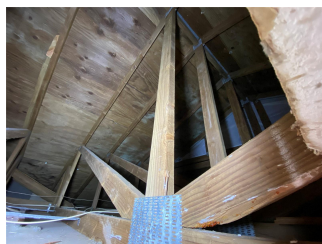
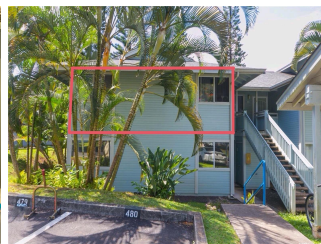
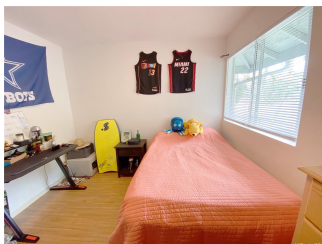
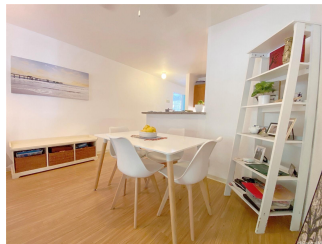
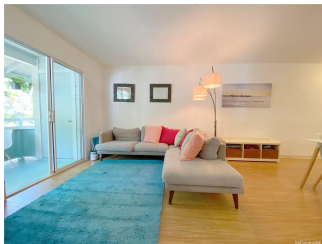


Gardens At Launani Vly 1 95-802 Wikao Street Unit R201, Mililani 96789 * Gardens At

Launani Vly 1 * \$559,000

Beds: 3	MLS#: <u>202408644</u>, FS	Year Built: 1993
Bath: 2/0	Status: Active	Remodeled: 2017
Living Sq. Ft.: 925	List Date & DOM: 04-19-2024 & 28	Total Parking: 2
Land Sq. Ft.: 172,498	Condition: Above Average	Assessed Value
Lanai Sq. Ft.: 60	Frontage: Preservation, Stream/Canal	Building: \$310,600
Sq. Ft. Other: 0	Tax/Year: \$158/2024	Land: \$251,300
Total Sq. Ft. 985	Neighborhood: Launani Valley	Total: \$561,900
Maint./Assoc. \$577 / \$80	Flood Zone : Zone D - Tool	Stories / CPR: Two / No
Parking: Assigned, Carport, Covered - 1, Guest, Open - 1	Frontage: Preservation, Stream/Canal	
Zoning : 05 - R-5 Residential District	View: Garden, Mountain	

Public Remarks: Welcome home to this corner-end unit with great breeze and year-round trades. Launani Valley is just minutes away from Mililani and Wahiawa, and 15 minutes away from Haleiwa, North Shore, Pearl City and H1. Close to Schofield Barrack and Wheeler Air Base with easy access to Barber's Point, Hickham, Pearl Harbor and MCBH. Gardens at Launani townhome offers tennis court, basketball court, swimming pool, jogging trails, BBQ area and playground in a safe and secure neighborhood. This second-story townhouse was remodeled in 2017 and is recently updated with fresh paint, newer appliances, led lighting, ceiling fans, refinished bathtubs and new window screens and blinds. This unit comes with 3 bedrooms, 2 full baths, and 2 assigned parking stalls with one covered and one uncovered stall. Ample guest parking. Storage is not a problem. This unit includes a huge attic storage space. Enjoy the open lanai with no back neighbors and lush tropical landscaping. Pet friendly with low maintenance fees. Listed at below tax assessed value. Call your realtor today to schedule a visit. **Sale Conditions:** None **Schools:** [Wheeler](#), [Wheeler](#), [Leilehua](#) * [Request Showing](#), [Photos](#), [History](#), [Maps](#), [Deed](#), [Watch List](#), [Tax Info](#)





Address	Price	Bd & Bth	Living / Avg.	Land Avg.	Lanai	Occ.	FL	DOM
95-802 Wikao Street R201	\$559,000	3 & 2/0	925 \$604	172,498 \$3	60	60%	2	28

Address	Tax Maint. Ass.	Assessed Land	Assessed Building	Assessed Total	Ratio	Year & Remodeled
95-802 Wikao Street R201	\$158 \$577 \$80	\$251,300	\$310,600	\$561,900	99%	1993 & 2017

[95-802 Wikao Street R201](#) - MLS#: [202408644](#) - Welcome home to this corner-end unit with great breeze and year-round trades. Launani Valley is just minutes away from Mililani and Wahiawa, and 15 minutes away from Haleiwa, North Shore, Pearl City and H1. Close to Schofield Barrack and Wheeler Air Base with easy access to Barber's Point, Hickham, Pearl Harbor and MCBH. Gardens at Launani townhome offers tennis court, basketball court, swimming pool, jogging trails, BBQ area and playground in a safe and secure neighborhood. This second-story townhouse was remodeled in 2017 and is recently updated with fresh paint, newer appliances, led lighting, ceiling fans, refinished bathtubs and new window screens and blinds. This unit comes with 3 bedrooms, 2 full baths, and 2 assigned parking stalls with one covered and one uncovered stall. Ample guest parking. Storage is not a problem. This unit includes a huge attic storage space. Enjoy the open lanai with no back neighbors and lush tropical landscaping. Pet friendly with low maintenance fees. Listed at below tax assessed value. Call your realtor today to schedule a visit. **Region:** Central **Neighborhood:** Launani Valley **Condition:** Above Average **Parking:** Assigned, Carport, Covered - 1, Guest, Open - 1 **Total Parking:** 2 **View:** Garden, Mountain **Frontage:** Preservation, Stream/Canal **Pool:** **Zoning:** 05 - R-5 Residential District **Sale Conditions:** None **Schools:** [Wheeler](#), [Wheeler](#), [Leilehua](#) * [Request Showing](#), [Photos](#), [History](#), [Maps](#), [Deed](#), [Watch List](#), [Tax Info](#)

DOM = Days on Market, Occ. = Occupancy, FL = Floor Number