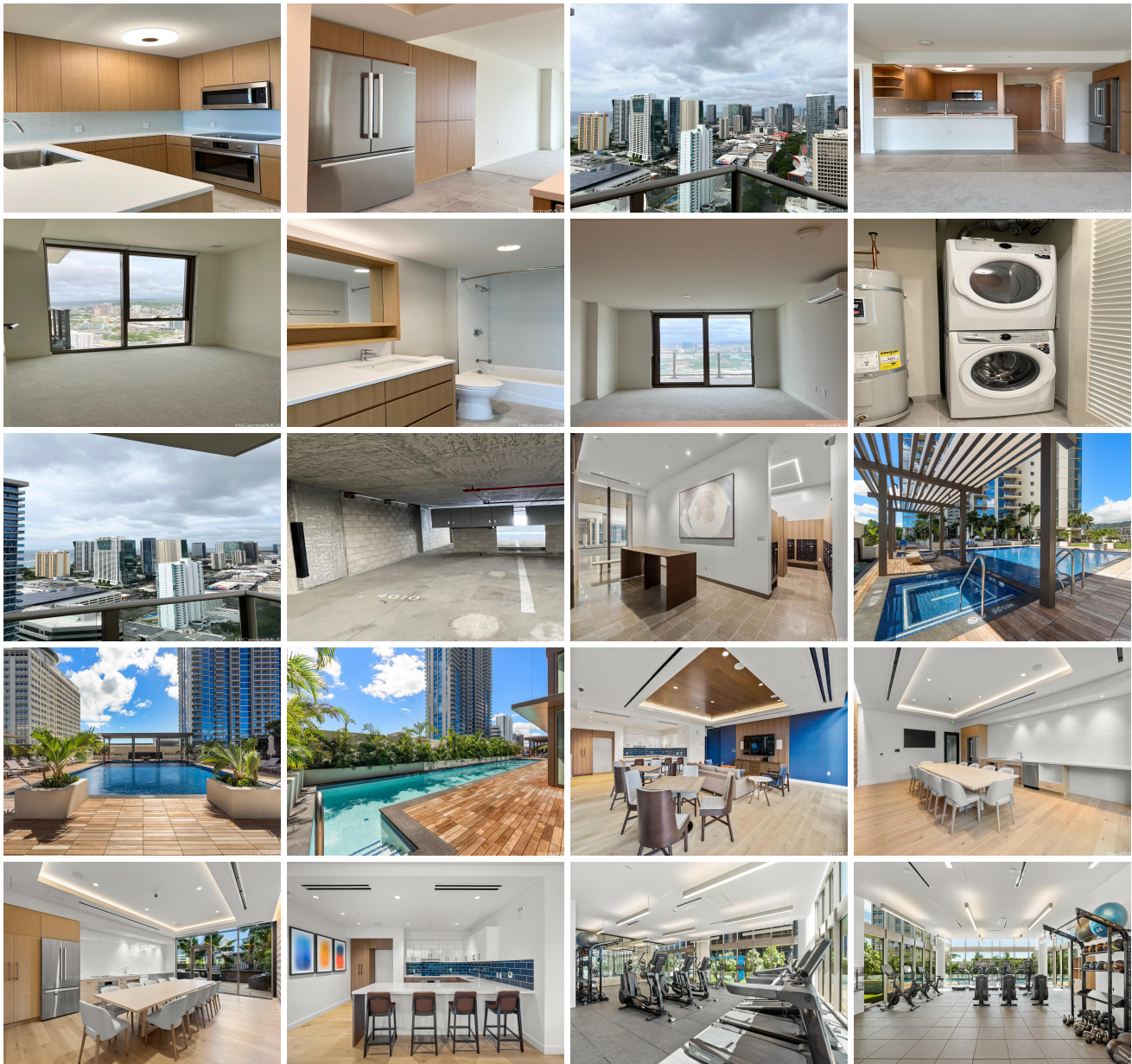


## **Sky Ala Moana West 1388 Kapiolani Boulevard Unit 3404, Honolulu 96814 \* Sky Ala Moana**

**West \* \$769,000**

Beds: <b>1</b>	MLS#: <b><a href="#">202408655</a>, FS</b>	Year Built: <b>2023</b>
Bath: <b>1/0</b>	Status: <b>Active Under Contract</b>	Remodeled:
Living Sq. Ft.: <b>521</b>	List Date & DOM: <b>04-23-2024 &amp; 7</b>	Total Parking: <b>1</b>
Land Sq. Ft.: <b>0</b>	Condition: <b>Excellent</b>	<a href="#">Assessed Value</a>
Lanai Sq. Ft.: <b>98</b>	Frontage:	Building: <b>\$587,000</b>
Sq. Ft. Other: <b>0</b>	Tax/Year: <b>\$66/2023</b>	Land: <b>\$35,800</b>
Total Sq. Ft. <b>619</b>	Neighborhood: <b>Holiday Mart</b>	Total: <b>\$622,800</b>
Maint./Assoc. <b>\$690 / \$0</b>	<a href="#">Flood Zone</a> : <b>Zone X - Tool</b>	Stories / CPR: <b>21+ / No</b>
Parking: <b>Assigned, Covered - 1, Guest, Secured Entry</b>	Frontage:	
<a href="#">Zoning</a> : <b>33 - BMX-3 Community Business M</b>	View: <b>City, Mountain, Ocean</b>	

**Public Remarks:** A beautiful high floor 1-bedroom unit features wide range of views of Ocean, City, and Mountain. Fantastic location, conveniently located across from Ala Moana Shopping Center and minutes from the beach and Waikiki. This brand-new residence features sophisticated Bosch appliances, luxury Silestone quartz countertops, Hansgrohe fixtures and American-made cabinetry throughout. Enjoy morning coffee from your large 98 sq ft open air lanai. The building offers resort-like amenities features central pool, whirlpool, lap pool, fitness center, poolside cabanas, private dining room, BBQ pavilions and the vibrant outdoor space with playground, two spas with dry and steam sauna and much more. **Sale Conditions:** None  
**Schools:** , , \* [Request Showing](#), [Photos](#), [History](#), [Maps](#), [Deed](#), [Watch List](#), [Tax Info](#)





Address	Price	Bd & Bth	Living / Avg.	Land   Avg.	Lanai	Occ.	FL	DOM
<a href="#">1388 Kapiolani Boulevard 3404</a>	<a href="#">\$769,000</a>	1 & 1/0	521   \$1,476	0   \$inf	98	0%	34	7

Address	Tax   Maint.   Ass.	Assessed Land	Assessed Building	Assessed Total	Ratio	Year & Remodeled
<a href="#">1388 Kapiolani Boulevard 3404</a>	\$66   \$690   \$0	\$35,800	\$587,000	\$622,800	123%	2023 & NA

<a href="#">1388 Kapiolani Boulevard 3404</a> - MLS#: <a href="#">202408655</a> - A beautiful high floor 1-bedroom unit features wide range of views of Ocean, City, and Mountain. Fantastic location, conveniently located across from Ala Moana Shopping Center and minutes from the beach and Waikiki. This brand-new residence features sophisticated Bosch appliances, luxury Silestone quartz countertops, Hansgrohe fixtures and American-made cabinetry throughout. Enjoy morning coffee from your large 98 sq ft open air lanai. The building offers resort-like amenities features central pool, whirlpool, lap pool, fitness center, poolside cabanas, private dining room, BBQ pavilions and the vibrant outdoor space with playground, two spas with dry and steam sauna and much more. <b>Region:</b> Metro <b>Neighborhood:</b> Holiday Mart <b>Condition:</b> Excellent <b>Parking:</b> Assigned, Covered - 1, Guest, Secured Entry <b>Total Parking:</b> 1 <b>View:</b> City, Mountain, Ocean <b>Frontage:</b> <b>Pool:</b> <b>Zoning:</b> 33 - BMX-3 Community Business M <b>Sale Conditions:</b> None <b>Schools:</b> , , * <a href="#">Request Showing</a> , <a href="#">Photos</a> , <a href="#">History</a> , <a href="#">Maps</a> , <a href="#">Deed</a> , <a href="#">Watch List</a> , <a href="#">Tax Info</a>						
---	--	--	--	--	--	--

DOM = Days on Market, Occ. = Occupancy, FL = Floor Number