

## **Hawaiian Monarch 444 Niu Street Unit 2801, Honolulu 96815 \* Hawaiian Monarch \***

**\$628,000**

Beds: **1**  
Bath: **2/0**  
Living Sq. Ft.: **576**

MLS#: **202408688, FS**  
Status: **Active**  
List Date & DOM: **04-22-2024 & 25**

Year Built: **1979**  
Remodeled:  
Total Parking: **0**

Land Sq. Ft.: **0**  
Lanai Sq. Ft.: **0**  
Sq. Ft. Other: **0**  
Total Sq. Ft. **576**  
Maint./Assoc. **\$987 / \$0**  
Parking: **None**

Condition: **Above Average, Average**

Frontage:  
Tax/Year: **\$367/2024**  
Neighborhood: **Waikiki**  
Flood Zone: **Zone AO - Tool**

Assessed Value

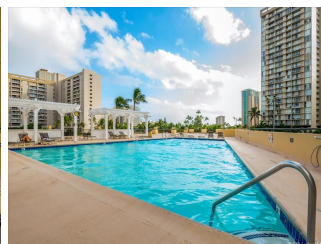
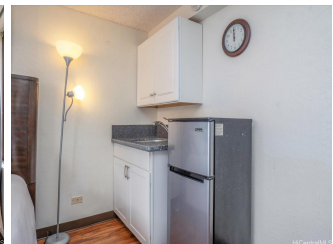
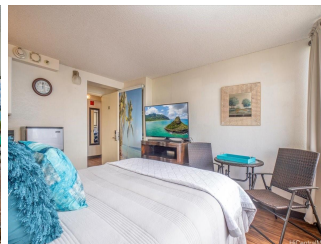
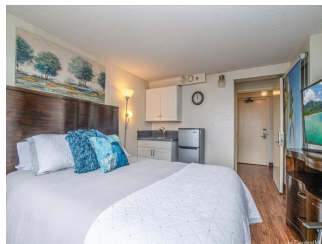
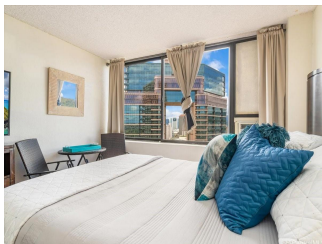
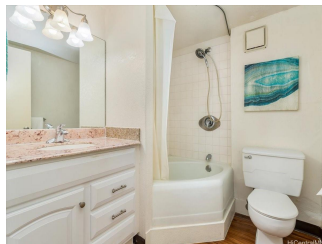
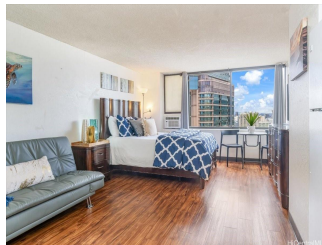
Building: **\$411,400**  
Land: **\$218,900**  
Total: **\$630,300**  
Stories / CPR: **21+ / No**

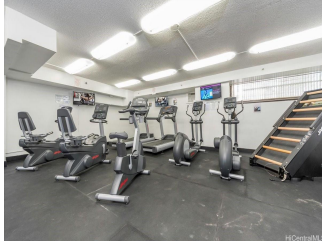
Frontage:

Zoning: **X2 - Apartment Precinct**

View: **City, Marina/Canal, Mountain**

**Public Remarks:** LEGAL SHORT TERM / DAILY VACATION RENTALS ALLOWED! This great Waikiki vacation friendly condo-hotel, a rare and unique 1-bdrm with 2 baths floor plan features separate entrances allowing the option to rent as 2 separate studio units. Located on the 28th floor, a corner end unit with an efficient floor plan and rental ready! Enjoy the views of Ala Wai canal, mountain, the brilliant colors of city lights. Hawaiian Monarch is great and one of a few condo-hotel building located near the entrance of Waikiki, it features an opened air lobby w/ resort amenities such as pool, fitness center, outdoor seating deck, a convenient store, cafe, eateries & many more enjoyable essentials of the world famous resort Waikiki location. **Sale Conditions:** None **Schools:** [Ala Wai](#), [Washington](#), [Mckinley](#) \* [Request Showing](#), [Photos](#), [History](#), [Maps](#), [Deed](#), [Watch List](#), [Tax Info](#)





Address	Price	Bd & Bth	Living / Avg.	Land   Avg.	Lanai	Occ.	FL	DOM
<a href="#">444 Niu Street 2801</a>	<a href="#">\$628,000</a>	1 & 2/0	576   \$1,090	0   \$inf	0	14%	28	25

Address	Tax   Maint.   Ass.	Assessed Land	Assessed Building	Assessed Total	Ratio	Year & Remodeled
<a href="#">444 Niu Street 2801</a>	\$367   \$987   \$0	\$218,900	\$411,400	\$630,300	100%	1979 & NA

<p><a href="#">444 Niu Street 2801</a> - MLS#: <a href="#">202408688</a> - LEGAL SHORT TERM / DAILY VACATION RENTALS ALLOWED! This great Waikiki vacation friendly condo-hotel, a rare and unique 1-bdrm with 2 baths floor plan features separate entrances allowing the option to rent as 2 separate studio units. Located on the 28th floor, a corner end unit with an efficient floor plan and rental ready! Enjoy the views of Ala Wai canal, mountain, the brilliant colors of city lights. Hawaiian Monarch is great and one of a few condo-hotel building located near the entrance of Waikiki, it features an opened air lobby w/ resort amenities such as pool, fitness center, outdoor seating deck, a convenient store, cafe, eateries &amp; many more enjoyable essentials of the world famous resort Waikiki location. <b>Region:</b> Metro <b>Neighborhood:</b> Waikiki <b>Condition:</b> Above Average, Average <b>Parking:</b> None <b>Total Parking:</b> 0 <b>View:</b> City, Marina/Canal, Mountain <b>Frontage:</b> <b>Pool:</b> <b>Zoning:</b> X2 - Apartment Precinct <b>Sale Conditions:</b> None <b>Schools:</b> <a href="#">Ala Wai</a>, <a href="#">Washington</a>, <a href="#">Mckinley</a> * <a href="#">Request Showing</a>, <a href="#">Photos</a>, <a href="#">History</a>, <a href="#">Maps</a>, <a href="#">Deed</a>, <a href="#">Watch List</a>, <a href="#">Tax Info</a></p>						
---	--	--	--	--	--	--

DOM = Days on Market, Occ. = Occupancy, FL = Floor Number