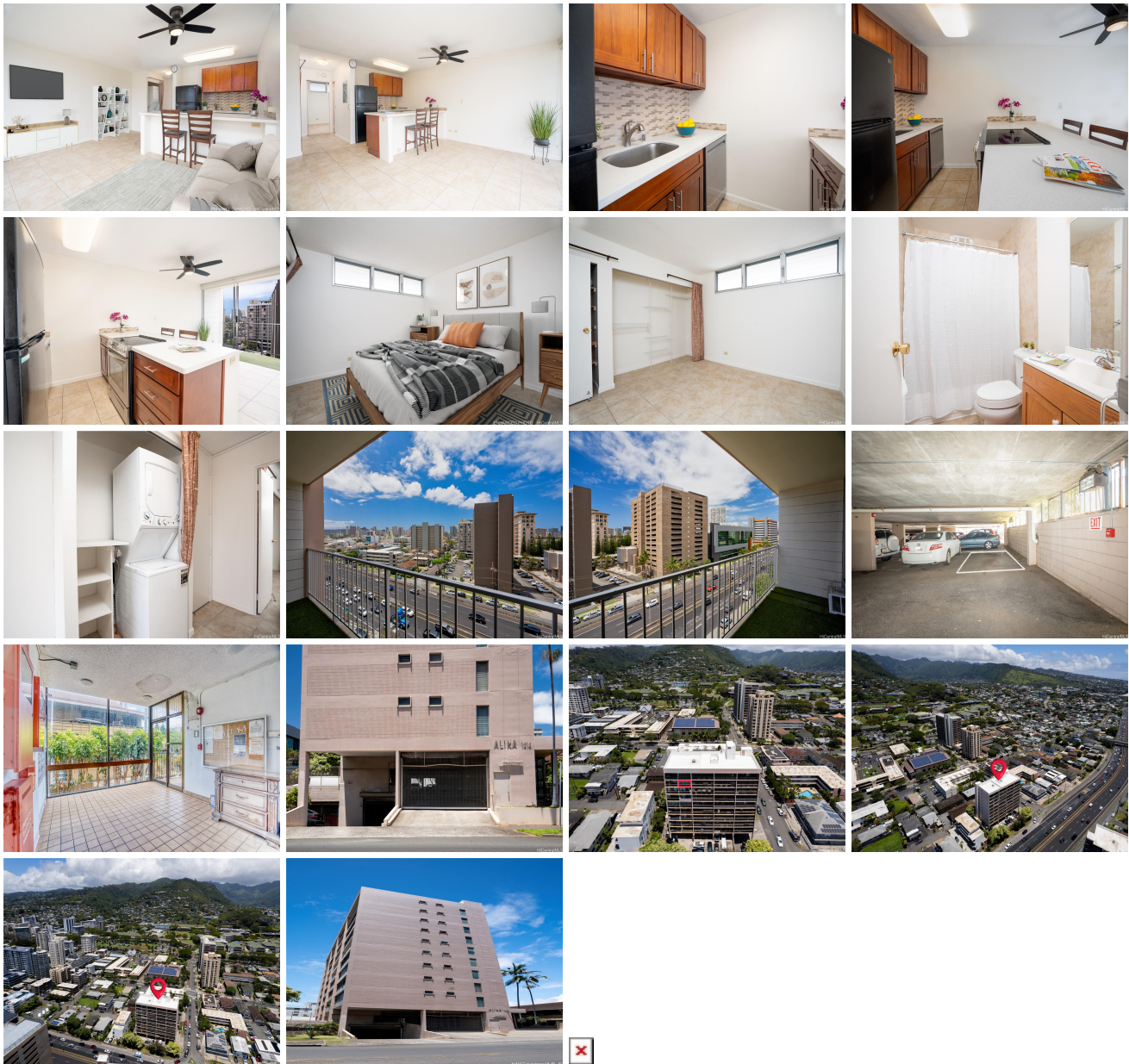


Alika 1414 Alexander Street Unit 802, Honolulu 96822 * Alika * \$359,000

Beds: 1	MLS#: 202408791, FS	Year Built: 1974
Bath: 1/0	Status: Active	Remodeled:
Living Sq. Ft.: 550	List Date & DOM: 04-23-2024 & 25	Total Parking: 1
Land Sq. Ft.: 0	Condition: Above Average	Assessed Value
Lanai Sq. Ft.: 60	Frontage:	Building: \$325,400
Sq. Ft. Other: 0	Tax/Year: \$91/2024	Land: \$63,600
Total Sq. Ft. 610	Neighborhood: Punahou	Total: \$389,000
Maint./Assoc. \$480 / \$0	Flood Zone : Zone X - Tool	Stories / CPR: 8-14 / No
Parking: Assigned, Covered - 1, Secured Entry, Street	Frontage:	
Zoning : 13 - A-3 High Density Apartment	View: City, Diamond Head	

Public Remarks: Attention First-Time Homebuyers and Investors! Welcome to this rare opportunity in the Punahou area. Discover a 1-bedroom, 1-bathroom unit with an assigned covered parking stall. Enjoy the benefits of an upgraded kitchen, convenient in-unit washer and dryer, along with new appliances including a stove, dishwasher, and A/C unit. Ideally situated near Punahou and Maryknoll schools, Kapiolani Medical Center, UH Manoa, and with easy access to the H-1 freeway. Rest assured with secured building and parking lot access, plus it's pet-friendly. **Sale Conditions:** None **Schools:** , , * [Request Showing, Photos, History, Maps, Deed, Watch List, Tax Info](#)



Address	Price	Bd & Bth	Living / Avg.	Land Avg.	Lanai	Occ.	FL	DOM
1414 Alexander Street 802	\$359,000	1 & 1/0	550 \$653	0 \$inf	60	67%	10	25

Address	Tax Maint. Ass.	Assessed Land	Assessed Building	Assessed Total	Ratio	Year & Remodeled
1414 Alexander Street 802	\$91 \$480 \$0	\$63,600	\$325,400	\$389,000	92%	1974 & NA

[1414 Alexander Street 802](#) - MLS#: [202408791](#) - Attention First-Time Homebuyers and Investors! Welcome to this rare opportunity in the Punahou area. Discover a 1-bedroom, 1-bathroom unit with an assigned covered parking stall. Enjoy the benefits of an upgraded kitchen, convenient in-unit washer and dryer, along with new appliances including a stove, dishwasher, and A/C unit. Ideally situated near Punahou and Maryknoll schools, Kapiolani Medical Center, UH Manoa, and with easy access to the H-1 freeway. Rest assured with secured building and parking lot access, plus it's pet-friendly.
Region: Metro **Neighborhood:** Punahou **Condition:** Above Average **Parking:** Assigned, Covered - 1, Secured Entry, Street
Total Parking: 1 **View:** City, Diamond Head **Frontage:** Pool: **Zoning:** 13 - A-3 High Density Apartment **Sale Conditions:** None **Schools:** , , * [Request Showing](#), [Photos](#), [History](#), [Maps](#), [Deed](#), [Watch List](#), [Tax Info](#)

DOM = Days on Market, Occ. = Occupancy, FL = Floor Number