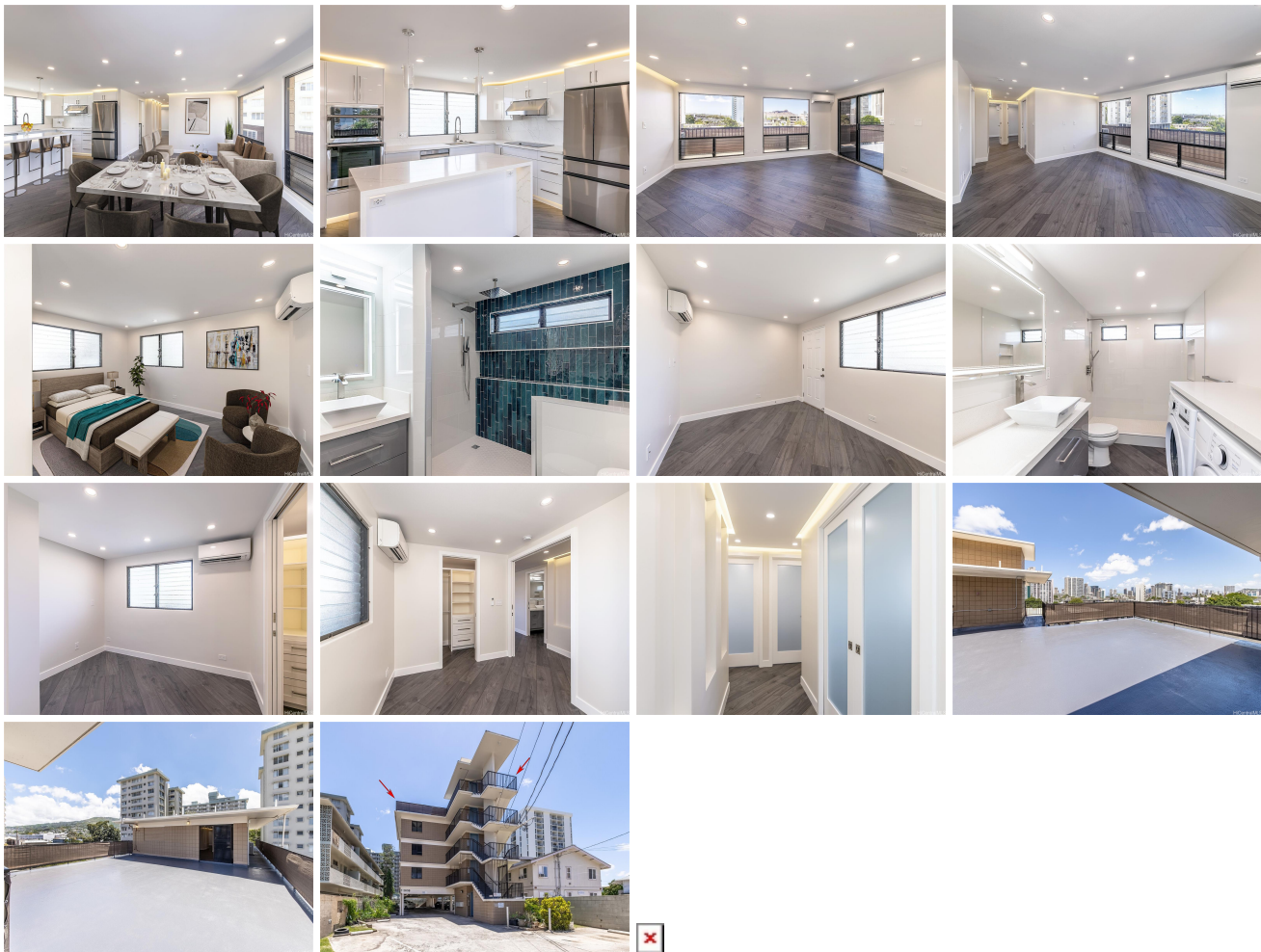


2638 Nakoo Condo Proj 2638 Nakookoo Street Unit 501, Honolulu 96826 * 2638 Nakoo Condo Proj * \$1,075,000 * Originally \$1,200,000

Beds: 3	MLS#: <u>202408794</u>, FS	Year Built: 1985
Bath: 2/0	Status: Active	Remodeled: 2023
Living Sq. Ft.: 1,151	List Date & DOM: 04-22-2024 & 26	Total Parking: 3
Land Sq. Ft.: 0	Condition: Excellent	Assessed Value
Lanai Sq. Ft.: 624	Frontage:	Building: \$453,000
Sq. Ft. Other: 0	Tax/Year: \$173/2023	Land: \$279,100
Total Sq. Ft. 1,775	Neighborhood: Moiliili	Total: \$732,100
Maint./Assoc. \$972 / \$0	Flood Zone : Zone X - Tool	Stories / CPR: / No
Parking: Assigned, Covered - 1, Open - 2	Frontage:	
Zoning : 12 - A-2 Medium Density Apartme	View: City, Diamond Head	

Public Remarks: SELLER TO REDUCE THE PRICE BY \$25,000 EVERY 5 DAYS UNTIL SOLD. TURN-KEY PENTHOUSE 3Bed/2Bath/3Parking with over 600 sqft of outdoor living space. 2638 Nakookoo is a boutique low-rise condominium situated in the heart of Honolulu, enjoy the grandeur of a single family home without the hassle of maintenance. This unit has been fully renovated from top to bottom and features modern gloss white cabinets, quartz countertops, stainless steel appliances, recessed lighting, ambient lighting, Mitsubishi split A/C, and more! Your private roof top deck showcases an unobstructed view of Diamond Head and is awaiting your finishing touches. This building is conveniently located minutes away from freeway access, University of Hawaii, private schools, and Waikiki. **Sale Conditions:** None **Schools:** , , * [Request Showing](#), [Photos](#), [History](#), [Maps](#), [Deed](#), [Watch List](#), [Tax Info](#)



Address	Price	Bd & Bth	Living / Avg.	Land Avg.	Lanai	Occ.	FL	DOM
2638 Nakookoo Street 501	<u>\$1,075,000</u>	3 & 2/0	1,151 \$934	0 inf	624	50%	5	26

Address	Tax Maint. Ass.	Assessed Land	Assessed Building	Assessed Total	Ratio	Year & Remodeled
2638 Nakookoo Street 501	\$173 \$972 \$0	\$279,100	\$453,000	\$732,100	147%	1985 & 2023

[2638 Nakookoo Street 501](#) - MLS#: [202408794](#) - Original price was \$1,200,000 - SELLER TO REDUCE THE PRICE BY \$25,000 EVERY 5 DAYS UNTIL SOLD. TURN-KEY PENTHOUSE 3Bed/2Bath/3Parking with over 600 sqft of outdoor living space. 2638 Nakookoo is a boutique low-rise condominium situated in the heart of Honolulu, enjoy the grandeur of a single family home without the hassle of maintenance. This unit has been fully renovated from top to bottom and features modern gloss white cabinets, quartz countertops, stainless steel appliances, recessed lighting, ambient lighting, Mitsubishi split A/C, and more! Your private roof top deck showcases an unobstructed view of Diamond Head and is awaiting your finishing touches. This building is conveniently located minutes away from freeway access, University of Hawaii, private schools, and Waikiki.
Region: Metro **Neighborhood:** Moiliili **Condition:** Excellent **Parking:** Assigned, Covered - 1, Open - 2 **Total Parking:** 3
View: City, Diamond Head **Frontage:** **Pool:** **Zoning:** 12 - A-2 Medium Density Apartme **Sale Conditions:** None **Schools:** ,
*, * [Request Showing](#), [Photos](#), [History](#), [Maps](#), [Deed](#), [Watch List](#), [Tax Info](#)

DOM = Days on Market, Occ. = Occupancy, FL = Floor Number