

Leisure Heritage 311 Ohua Avenue Unit 1104D, Honolulu 96815 * Leisure Heritage *

\$635,000

Beds: **2**
Bath: **2/0**
Living Sq. Ft.: **955**
Land Sq. Ft.: **21,432**
Lanai Sq. Ft.: **131**
Sq. Ft. Other: **0**
Total Sq. Ft. **1,086**
Maint./Assoc. **\$1,318 / \$0**
Parking: **Assigned**

MLS#: **202408838**, FS
Status: **Active**
List Date & DOM: **04-23-2024 & 25**
Condition: **Excellent**
Frontage: **Other**
Tax/Year: **\$122/2023**
Neighborhood: **Waikiki**
Flood Zone: **Zone AE - Tool**

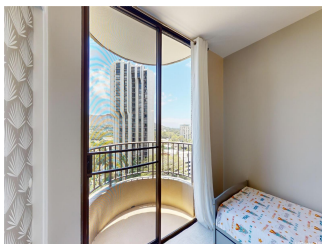
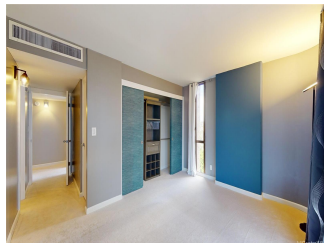
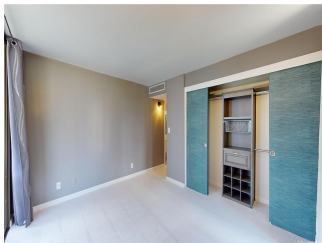
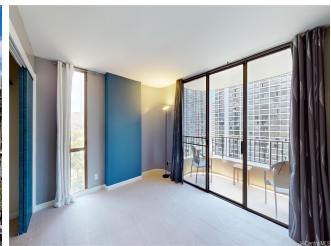
Year Built: **1974**
Remodeled: **2024**
Total Parking: **1**
Assessed Value
Building: **\$553,600**
Land: **\$116,000**
Total: **\$669,600**
Stories / CPR: **One / No**

Frontage: **Other**

Zoning: **X2 - Apartment Precinct**

View: **Diamond Head, Mountain, Ocean, Sunrise**

Public Remarks: Discover paradise in the heart of Waikiki! This incredible 2 bed/2 bath condo features a newly renovated kitchen with new floors, quartz counters & newer cabinets, custom-designed central AC system, fresh paint and more! With over 950 sq ft of interior living space and three lanais, this is the largest Diamond Head-facing 2 bedroom layout in the building. Maintenance fee includes Electricity, AC, hot water, sewer, water, internet, cable (Disney+ and 1 DVR unit included). Take in the Diamond Head, ocean, and city lights views in this perfectly located condo just 2 blocks from the world famous Waikiki Beach, Kapiolani Park, eateries, nightlife, shopping and more! DO NOT MISS THIS OPPORTUNITY to own a piece of paradise! **Sale Conditions:** None **Schools:** , , * [Request Showing](#), [Photos](#), [History](#), [Maps](#), [Deed](#), [Watch List](#), [Tax Info](#)





Address	Price	Bd & Bth	Living / Avg.	Land Avg.	Lanai	Occ.	FL	DOM
311 Ohua Avenue 1104D	\$635,000	2 & 2/0	955 \$665	21,432 \$30	131	57%	11	25

Address	Tax Maint. Ass.	Assessed Land	Assessed Building	Assessed Total	Ratio	Year & Remodeled
311 Ohua Avenue 1104D	\$122 \$1,318 \$0	\$116,000	\$553,600	\$669,600	95%	1974 & 2024

[311 Ohua Avenue 1104D](#) - MLS#: [202408838](#) - Discover paradise in the heart of Waikiki! This incredible 2 bed/2 bath condo features a newly renovated kitchen with new floors, quartz counters & newer cabinets, custom-designed central AC system, fresh paint and more! With over 950 sq ft of interior living space and three lanais, this is the largest Diamond Head-facing 2 bedroom layout in the building. Maintenance fee includes Electricity, AC, hot water, sewer, water, internet, cable (Disney+ and 1 DVR unit included). Take in the Diamond Head, ocean, and city lights views in this perfectly located condo just 2 blocks from the world famous Waikiki Beach, Kapiolani Park, eateries, nightlife, shopping and more! DO NOT MISS THIS OPPORTUNITY to own a piece of paradise! **Region:** Metro **Neighborhood:** Waikiki **Condition:** Excellent **Parking:** Assigned **Total Parking:** 1 **View:** Diamond Head, Mountain, Ocean, Sunrise **Frontage:** Other **Pool:** **Zoning:** X2 - Apartment Precinct **Sale Conditions:** None **Schools:** , , * [Request Showing](#), [Photos](#), [History](#), [Maps](#), [Deed](#), [Watch List](#), [Tax Info](#)

DOM = Days on Market, Occ. = Occupancy, FL = Floor Number