

Haiku Hale 46-283 Kahuhipa Street Unit C908, Kaneohe 96744 * Haiku Hale * \$500,000

Beds: **3**

MLS#: **202408846, FS**

Year Built: **1976**

Bath: **2/0**

Status: **Active Under Contract**

Remodeled:

Living Sq. Ft.: **960**

List Date & DOM: **04-23-2024 & 9**

Total Parking: **1**

Land Sq. Ft.: **108,987**

Condition: **Average**

[Assessed Value](#)

Lanai Sq. Ft.: **416**

Frontage:

Building: **\$492,400**

Sq. Ft. Other: **0**

Tax/Year: **\$124/2024**

Land: **\$55,000**

Total Sq. Ft. **1,376**

Neighborhood: **Windward Estates**

Total: **\$547,400**

Maint./Assoc. **\$578 / \$0**

[Flood Zone](#): **Zone X - Tool**

Stories / CPR: **8-14 / No**

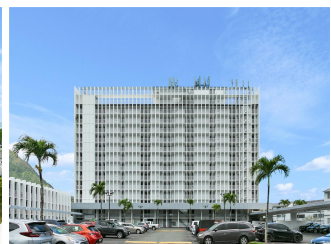
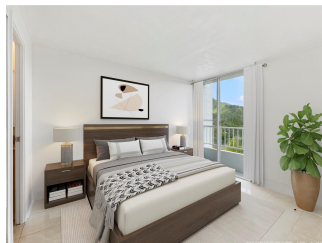
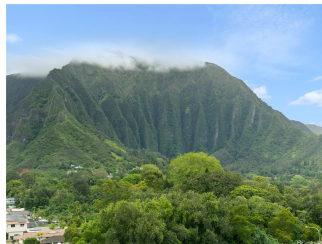
Parking: **Assigned, Guest, Open - 1, Secured Entry, Street**

Frontage:

[Zoning](#): **12 - A-2 Medium Density Apartme**

View: **Garden, Mountain, Ocean, Sunrise, Sunset**

Public Remarks: **Broker's Open on Thursday, April 25th from 10am to 12pm. First Open House on Sunday, April 28 from 2-5pm.** **VEWS, VIEWS, VIEWS!** Welcome to this corner, higher level, 3-bedroom, 2-bath unit with ocean views at Haiku Hale! Located in the highly sought after Building C, enjoy endless Ko'olau mountain and Kaneohe Bay views throughout the home with comforting trade winds. This unit has been well maintained with custom cabinets and beautiful ceramic tile floors. Relax on the your own private lanai, admiring the gorgeous and serene views of Kaneohe, and bonus storage closet space. Lower maintenance fees with many amenities! Haiku Hale is pet friendly, with a heated pool, penthouse exercise room, recreation area/room, gated children's playground, and more! Secured and gated community with Resident Manager, surveillance cameras, gate remote, and access card for peace of mind. Centrally located in Kaneohe Town, near Windward Mall, restaurants, shopping, and quick commute to Honolulu, Likelike Hwy, Pali Hwy and H-3. Nearby you'll find yourself in an outdoor playground with hiking trails, beaches, fishing, golf courses and more adventures! Don't miss your chance to own this! **Sale Conditions:** None **Schools:** , , * [Request Showing](#), [Photos](#), [History](#), [Maps](#), [Deed](#), [Watch List](#), [Tax Info](#)





Address	Price	Bd & Bth	Living / Avg.	Land Avg.	Lanai	Occ.	FL	DOM
46-283 Kahuhipa Street C908	\$500,000	3 & 2/0	960 \$521	108,987 \$5	416	60%	9	9

Address	Tax Maint. Ass.	Assessed Land	Assessed Building	Assessed Total	Ratio	Year & Remodeled
46-283 Kahuhipa Street C908	\$124 \$578 \$0	\$55,000	\$492,400	\$547,400	91%	1976 & NA

[46-283 Kahuhipa Street C908](#) - MLS#: [202408846](#) - **Broker's Open on Thursday, April 25th from 10am to 12pm. First Open House on Sunday, April 28 from 2-5pm.** VIEWS, VIEWS, VIEWS! Welcome to this corner, higher level, 3-bedroom, 2-bath unit with ocean views at Haiku Hale! Located in the highly sought after Building C, enjoy endless Ko'olau mountain and Kaneohe Bay views throughout the home with comforting trade winds. This unit has been well maintained with custom cabinets and beautiful ceramic tile floors. Relax on the your own private lanai, admiring the gorgeous and serene views of Kaneohe, and bonus storage closet space. Lower maintenance fees with many amenities! Haiku Hale is pet friendly, with a heated pool, penthouse exercise room, recreation area/room, gated children's playground, and more! Secured and gated community with Resident Manager, surveillance cameras, gate remote, and access card for peace of mind. Centrally located in Kaneohe Town, near Windward Mall, restaurants, shopping, and quick commute to Honolulu, Likelike Hwy, Pali Hwy and H-3. Nearby you'll find yourself in an outdoor playground with hiking trails, beaches, fishing, golf courses and more adventures! Don't miss your chance to own this! **Region:** Kaneohe **Neighborhood:** Windward Estates **Condition:** Average **Parking:** Assigned, Guest, Open - 1, Secured Entry, Street **Total Parking:** 1 **View:** Garden, Mountain, Ocean, Sunrise, Sunset **Frontage:** **Pool:** **Zoning:** 12 - A-2 Medium Density Apartme **Sale Conditions:** None **Schools:** , , * [Request Showing](#), [Photos](#), [History](#), [Maps](#), [Deed](#), [Watch List](#), [Tax Info](#)

DOM = Days on Market, Occ. = Occupancy, FL = Floor Number