

Punahou Royale 1541 Dominis Street Unit 903, Honolulu 96822 * Punahou Royale *

\$410,000

Beds: **1**

MLS#: **202408848, FS**

Year Built: **1973**

Bath: **1/0**

Status: **Active Under Contract**

Remodeled: **2024**

Living Sq. Ft.: **567**

List Date & DOM: **04-24-2024 & 7**

Total Parking: **1**

Land Sq. Ft.: **21,257**

Condition: **Excellent**

[Assessed Value](#)

Lanai Sq. Ft.: **63**

Frontage:

Building: **\$325,000**

Sq. Ft. Other: **0**

Tax/Year: **\$108/2023**

Land: **\$47,600**

Total Sq. Ft. **630**

Neighborhood: **Makiki Area**

Total: **\$372,600**

Maint./Assoc. **\$435 / \$0**

[Flood Zone](#): **Zone X - Tool**

Stories / CPR: **One / No**

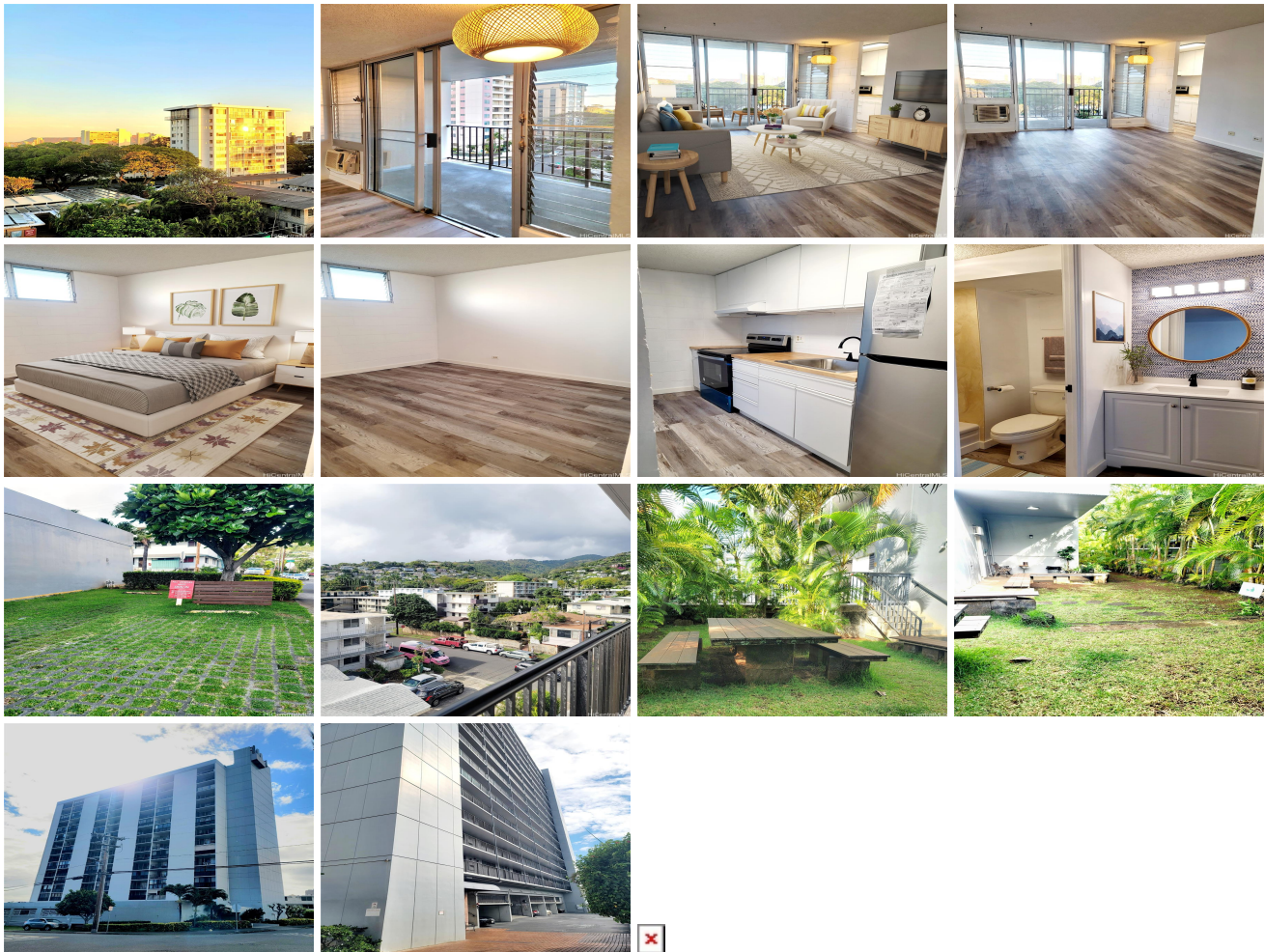
Parking: **Covered - 1**

Frontage:

[Zoning](#): **12 - A-2 Medium Density Apartme**

View: **Diamond Head, Mountain, Sunrise**

Public Remarks: Location is key and this lovely 1 bedroom condo is a rare find in this Punahou and upper Makiki area! Punahou Royale is a block away from Punahou school and minutes from Manoa Marketplace to offer you convenience and a community like no others. This unit just got tastefully renovated and you'll find a beautiful slate to start your own happy place. Fresh paint throughout, new kitchen countertop/ sink fixtures, new vanity area, and even all the behind-the-wall pipes and drains just got replaced so it is anxiety-free of cracks and leaks. Views of diamond head from your private patio and the mountain view from the door will surely soothe the soul. New stainless appliances and vinyl wood flooring accents the chic modern feel to this bright space. Hardly goes on market, hurry and get your offer in today. **Sale Conditions:** None **Schools:** , , * [Request Showing](#), [Photos](#), [History](#), [Maps](#), [Deed](#), [Watch List](#), [Tax Info](#)



Address	Price	Bd & Bth	Living / Avg.	Land Avg.	Lanai	Occ.	FL	DOM
1541 Dominis Street 903	\$410,000	1 & 1/0	567 \$723	21,257 \$19	63	55%	9	7

Address	Tax Maint. Ass.	Assessed Land	Assessed Building	Assessed Total	Ratio	Year & Remodeled
1541 Dominis Street 903	\$108 \$435 \$0	\$47,600	\$325,000	\$372,600	110%	1973 & 2024

[1541 Dominis Street 903](#) - MLS#: [202408848](#) - Location is key and this lovely 1 bedroom condo is a rare find in this Punahou and upper Makiki area! Punahou Royale is a block away from Punahou school and minutes from Manoa Marketplace to offer you convenience and a community like no others. This unit just got tastefully renovated and you'll find a beautiful slate to start your own happy place. Fresh paint throughout, new kitchen countertop/ sink fixtures, new vanity area, and even all the behind-the-wall pipes and drains just got replaced so it is anxiety-free of cracks and leaks. Views of diamond head from your private patio and the mountain view from the door will surely soothe the soul. New stainless appliances and vinyl wood flooring accents the chic modern feel to this bright space. Hardly goes on market, hurry and get your offer in today. **Region:** Metro **Neighborhood:** Makiki Area **Condition:** Excellent **Parking:** Covered - 1 **Total Parking:** 1 **View:** Diamond Head, Mountain, Sunrise **Frontage:** **Pool:** **Zoning:** 12 - A-2 Medium Density Apartme **Sale Conditions:** None **Schools:** , , *
[Request Showing](#), [Photos](#), [History](#), [Maps](#), [Deed](#), [Watch List](#), [Tax Info](#)

DOM = Days on Market, Occ. = Occupancy, FL = Floor Number