

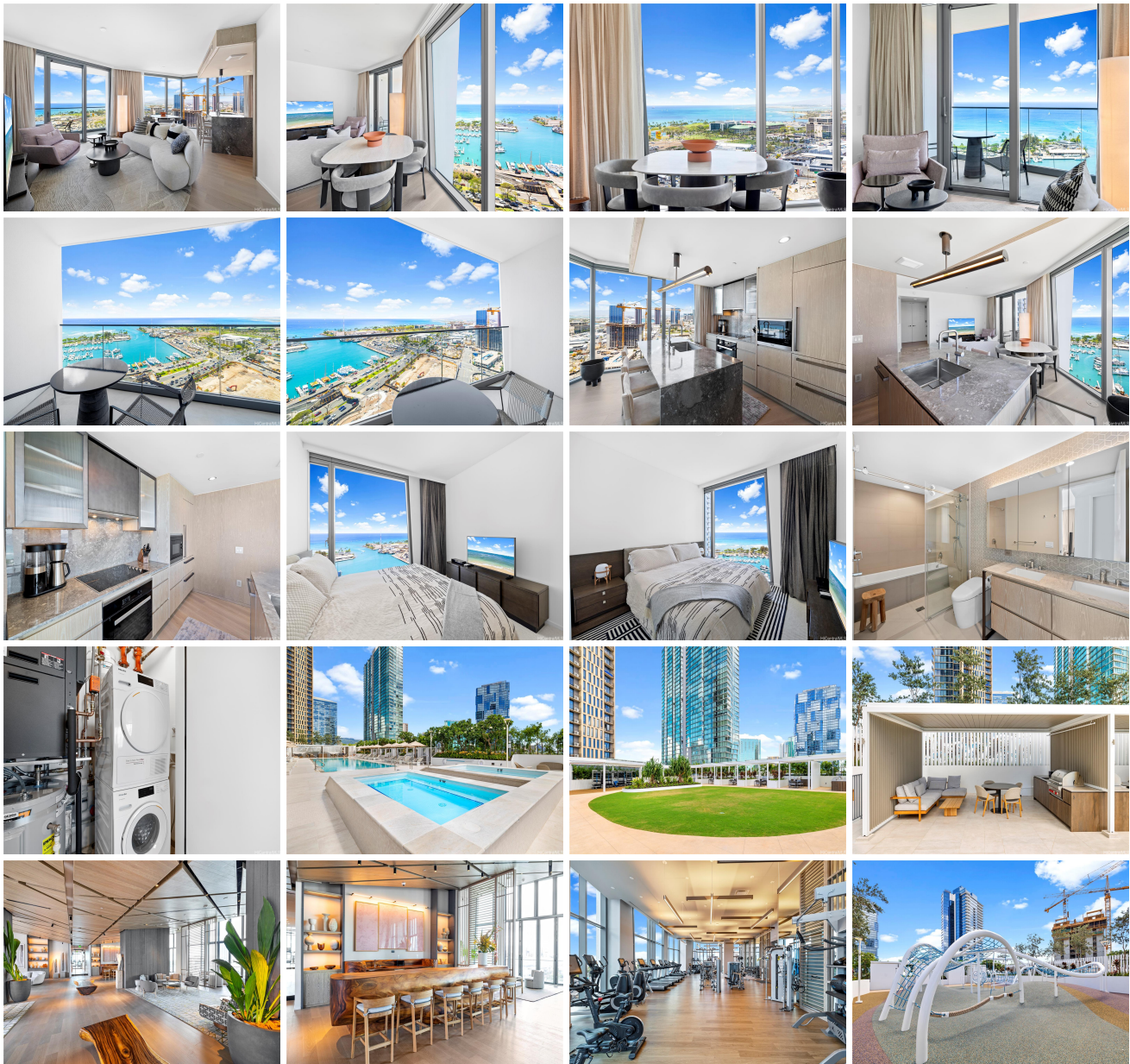
**Koula 1000 Auahi Street Unit 2501, Honolulu 96814 \* Koula \* \$1,450,000**

Beds: <b>1</b>	MLS#: <b>202408915</b> , FS	Year Built: <b>2022</b>
Bath: <b>1/0</b>	Status: <b>Active</b>	Remodeled:
Living Sq. Ft.: <b>739</b>	List Date & DOM: <b>04-24-2024 &amp; 23</b>	Total Parking: <b>1</b>
Land Sq. Ft.: <b>0</b>	Condition: <b>Excellent</b>	<a href="#">Assessed Value</a>
Lanai Sq. Ft.: <b>82</b>	Frontage:	Building: <b>\$1,398,100</b>
Sq. Ft. Other: <b>0</b>	Tax/Year: <b>\$700/2024</b>	Land: <b>\$34,600</b>
Total Sq. Ft. <b>821</b>	Neighborhood: <b>Kakaako</b>	Total: <b>\$1,432,700</b>
Maint./Assoc. <b>\$948 / \$28</b>	<a href="#">Flood Zone</a> : <b>Zone AE - Tool</b>	Stories / CPR: <b>21+ / No</b>
Parking: <b>Assigned, Covered - 1, Guest</b>	Frontage:	

[Zoning](#): **KA - State jurisdiction, refer**

View: **Coastline, Marina/Canal, Mountain, Ocean, Sunset**

**Public Remarks:** Outstanding 1 bedroom, 1 bath unit comes with one parking. Fully furnished with developers premium high end furniture package. Floor to ceiling windows provide natural sunlight that gives you the warmth of living in Hawaii. Motorized drapes in the living room. Top of the line Neorest toto. Double sink in bathroom. Shower and bathtub combo together behind glass enclosure. Views from this unit will amaze you. Close to Ward Village and all it has to offer, from retail, restaurants and entertainment. A few minutes away, and you can enjoy Ala Moana Center and Beach Park or stay and relax in the resort like amenities that Koula has to offer. **Sale Conditions:** None **Schools:** [Kaahumanu](#), [Stevenson](#), [Mckinley](#) \* [Request Showing](#), [Photos](#), [History](#), [Maps](#), [Deed](#), [Watch List](#), [Tax Info](#)





Address	Price	Bd & Bth	Living / Avg.	Land   Avg.	Lanai	Occ.	FL	DOM
<a href="#">1000 Auahi Street 2501</a>	<a href="#">\$1,450,000</a>	1 & 1/0	739   \$1,962	0   \$inf	82	50%	25	23

Address	Tax   Maint.   Ass.	Assessed Land	Assessed Building	Assessed Total	Ratio	Year & Remodeled
<a href="#">1000 Auahi Street 2501</a>	\$700   \$948   \$28	\$34,600	\$1,398,100	\$1,432,700	101%	2022 & NA

<p><a href="#">1000 Auahi Street 2501</a> - MLS#: <a href="#">202408915</a> - Outstanding 1 bedroom, 1 bath unit comes with one parking. Fully furnished with developers premium high end furniture package. Floor to ceiling windows provide natural sunlight that gives you the warmth of living in Hawaii. Motorized drapes in the living room. Top of the line Neorest toto. Double sink in bathroom. Shower and bathtub combo together behind glass enclosure. Views from this unit will amaze you. Close to Ward Village and all it has to offer, from retail, restaurants and entertainment. A few minutes away, and you can enjoy Ala Moana Center and Beach Park or stay and relax in the resort like amenities that Koula has to offer. <b>Region:</b> Metro <b>Neighborhood:</b> Kakaako <b>Condition:</b> Excellent <b>Parking:</b> Assigned, Covered - 1, Guest <b>Total Parking:</b> 1 <b>View:</b> Coastline, Marina/Canal, Mountain, Ocean, Sunset <b>Frontage:</b> <b>Pool:</b> <b>Zoning:</b> KA - State jurisdiction, refer <b>Sale Conditions:</b> None <b>Schools:</b> <a href="#">Kaahumanu</a>, <a href="#">Stevenson</a>, <a href="#">Mckinley</a> * <a href="#">Request Showing</a>, <a href="#">Photos</a>, <a href="#">History</a>, <a href="#">Maps</a>, <a href="#">Deed</a>, <a href="#">Watch List</a>, <a href="#">Tax Info</a></p>						
---	--	--	--	--	--	--

DOM = Days on Market, Occ. = Occupancy, FL = Floor Number