

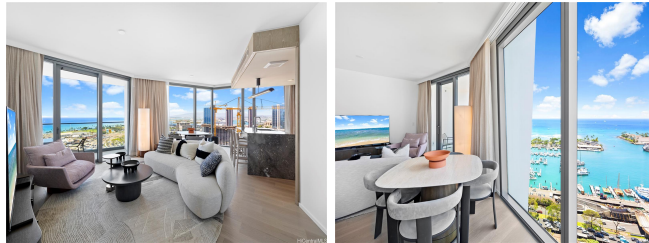
Koula 1000 Auahi Street Unit 2501, Honolulu 96814 * Koula * \$1,450,000

Beds: 1	MLS#: 202408915, FS	Year Built: 2022
Bath: 1/0	Status: Active	Remodeled:
Living Sq. Ft.: 739	List Date & DOM: 04-24-2024 & 29	Total Parking: 1
Land Sq. Ft.: 0	Condition: Excellent	Assessed Value
Lanai Sq. Ft.: 82	Frontage:	Building: \$1,398,100
Sq. Ft. Other: 0	Tax/Year: \$700/2024	Land: \$34,600
Total Sq. Ft. 821	Neighborhood: Kakaako	Total: \$1,432,700
Maint./Assoc. \$948 / \$28	Flood Zone: Zone AE - Tool	Stories / CPR: 21+ / No
Parking: Assigned, Covered - 1, Guest	Frontage:	

Zoning: KA - State jurisdiction, refer

View: **Coastline, Marina/Canal, Mountain, Ocean, Sunset**

Public Remarks: Outstanding 1 bedroom, 1 bath unit comes with one parking. Fully furnished with developers premium high end furniture package. Floor to ceiling windows provide natural sunlight that gives you the warmth of living in Hawaii. Motorized drapes in the living room. Top of the line Neorest toto. Double sink in bathroom. Shower and bathtub combo together behind glass enclosure. Views from this unit will amaze you. Close to Ward Village and all it has to offer, from retail, restaurants and entertainment. A few minutes away, and you can enjoy Ala Moana Center and Beach Park or stay and relax in the resort like amenities that Koula has to offer. **Sale Conditions:** None **Schools:** [Kaahumanu](#), [Stevenson](#), [Mckinley](#) *
[Request Showing](#), [Photos](#), [History](#), [Maps](#), [Deed](#), [Watch List](#), [Tax Info](#)



Address	Price	Bd & Bth	Living / Avg.	Land Avg.	Lanai	Occ.	FL	DOM
1000 Auahi Street 2501	\$1,450,000	1 & 1/0	739 \$1,962	0 \$inf	82	50%	25	29

Address	Tax Maint. Ass.	Assessed Land	Assessed Building	Assessed Total	Ratio	Year & Remodeled
1000 Auahi Street 2501	\$700 \$948 \$28	\$34,600	\$1,398,100	\$1,432,700	101%	2022 & NA

1000 Auahi Street 2501 - MLS#: **202408915** - Outstanding 1 bedroom, 1 bath unit comes with one parking. Fully furnished with developers premium high end furniture package. Floor to ceiling windows provide natural sunlight that gives you the warmth of living in Hawaii. Motorized drapes in the living room. Top of the line Neorest toto. Double sink in bathroom. Shower and bathtub combo together behind glass enclosure. Views from this unit will amaze you. Close to Ward Village and all it has to offer, from retail, restaurants and entertainment. A few minutes away, and you can enjoy Ala Moana Center and Beach Park or stay and relax in the resort like amenities that Koula has to offer. **Region:** Metro **Neighborhood:** Kakaako **Condition:** Excellent **Parking:** Assigned, Covered - 1, Guest **Total Parking:** 1 **View:** Coastline, Marina/Canal, Mountain, Ocean, Sunset **Frontage:** Pool: **Zoning:** KA - State jurisdiction, refer **Sale Conditions:** None **Schools:** [Kaaumanu](#), [Stevenson](#), [Mckinley](#) * [Request Showing](#), [Photos](#), [History](#), [Maps](#), [Deed](#), [Watch List](#), [Tax Info](#)

DOM = Days on Market, Occ. = Occupancy, FL = Floor Number