

**Inn On The Park 1920 Ala Moana Boulevard Unit 610, Honolulu 96815 \* Inn On The Park \***

**\$89,000**

Beds: **0**  
Bath: **1/0**  
Living Sq. Ft.: **320**

MLS#: **202408971**, LH  
Status: **Active**  
List Date & DOM: **04-25-2024 & 28**

Year Built: **1978**  
Remodeled: **2011**  
Total Parking: **0**

Land Sq. Ft.: **0**  
Lanai Sq. Ft.: **41**  
Sq. Ft. Other: **0**  
Total Sq. Ft. **361**  
Maint./Assoc. **\$564 / \$0**

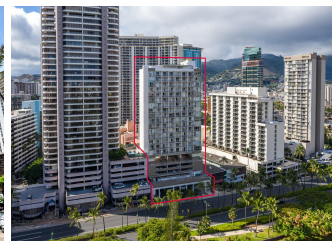
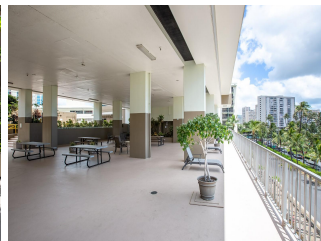
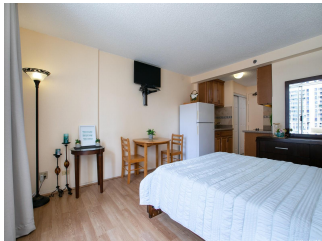
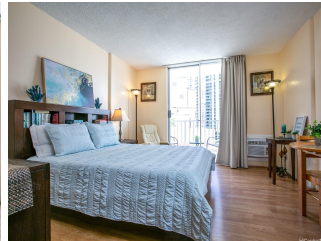
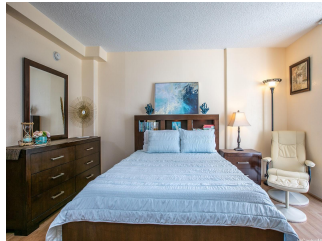
Condition: **Excellent, Above Average, Average**  
Frontage: **Other**  
Tax/Year: **\$96/2024**  
Neighborhood: **Waikiki**  
Flood Zone: **Zone AO - Tool**

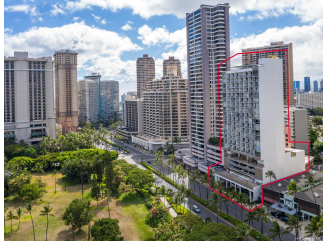
Assessed Value  
Building: **\$273,100**  
Land: **\$56,100**  
Total: **\$329,200**  
Stories / CPR: **21+ / No**

Parking: **None, Guest, Open - 1, Other**  
Zoning: **X2 - Apartment Precinct**

Frontage: **Other**  
View: **City, Mountain**

**Public Remarks:** A fantastic opportunity to own a fully furnished, move in ready studio in Waikiki, bordering Ala Moana & Waikiki. Unit 610 has one of the largest floor plans in the building to make it enjoyable long term or for a quick get away! Tastefully remodeled to maximize the space for comfort, relaxation, and easy cooking with full size refrigerator, cook-top and a lanai to relax on. BBQ grill is also available on the same level as the sparkling pool and rec deck. This building is located just minutes away from Hilton Hawaiian Village, Fort DeRussy and Ala Moana Shopping Center! Lots of green open spaces and beaches to keep you healthy and happy! Ideal to live, work, and play! \*\*Unit has fire sprinkler system. Parking and storage are available by rent subject to availability. Currently, the building has a 30 day minimum rental policy, buyer to verify. Great value! HOA includes electricity, hot water, water, sewer, basic cable and internet. As of May 1, HOA will be \$653.76. **Sale Conditions:** None **Schools:** , , \* [Request Showing](#), [Photos](#), [History](#), [Maps](#), [Deed](#), [Watch List](#), [Tax Info](#)





| Address                                      | Price              | Bd & Bth | Living / Avg. | Land   Avg. | Lanai | Occ. | FL | DOM |
|--|--------------------|----------|---------------|-------------|-------|------|----|-----|
| <a href="#">1920 Ala Moana Boulevard 610</a> | <b>\$89,000 LH</b> | 0 & 1/0  | 320   \$278   | 0   \$inf   | 41    | 9%   | 6  | 28  |

| Address                                      | Tax   Maint.   Ass. | Assessed Land | Assessed Building | Assessed Total | Ratio | Year & Remodeled |
|--|---------------------|---------------|-------------------|----------------|-------|------------------|
| <a href="#">1920 Ala Moana Boulevard 610</a> | \$96   \$564   \$0  | \$56,100      | \$273,100         | \$329,200      | 27%   | 1978 & 2011      |

|   |  |  |  |  |  |  |
|---|--|--|--|--|--|--|
| <p><a href="#">1920 Ala Moana Boulevard 610</a> - MLS#: <a href="#">202408971</a> - A fantastic opportunity to own a fully furnished, move in ready studio in Waikiki, bordering Ala Moana &amp; Waikiki. Unit 610 has one of the largest floor plans in the building to make it enjoyable long term or for a quick get away! Tastefully remodeled to maximize the space for comfort, relaxation, and easy cooking with full size refrigerator, cook-top and a lanai to relax on. BBQ grill is also available on the same level as the sparkling pool and rec deck. This building is located just minutes away from Hilton Hawaiian Village, Fort DeRussy and Ala Moana Shopping Center! Lots of green open spaces and beaches to keep you healthy and happy! Ideal to live, work, and play! **Unit has fire sprinkler system. Parking and storage are available by rent subject to availability. Currently, the building has a 30 day minimum rental policy, buyer to verify. Great value! HOA includes electricity, hot water, water, sewer, basic cable and internet. As of May 1, HOA will be \$653.76. <b>Region:</b> Metro <b>Neighborhood:</b> Waikiki <b>Condition:</b> Excellent, Above Average, Average <b>Parking:</b> None, Guest, Open - 1, Other <b>Total Parking:</b> 0 <b>View:</b> City, Mountain <b>Frontage:</b> Other <b>Pool:</b> <b>Zoning:</b> X2 - Apartment Precinct <b>Sale Conditions:</b> None <b>Schools:</b> , , * <a href="#">Request Showing</a>, <a href="#">Photos</a>, <a href="#">History</a>, <a href="#">Maps</a>, <a href="#">Deed</a>, <a href="#">Watch List</a>, <a href="#">Tax Info</a></p> |  |  |  |  |  |  |
|---|--|--|--|--|--|--|

DOM = Days on Market, Occ. = Occupancy, FL = Floor Number