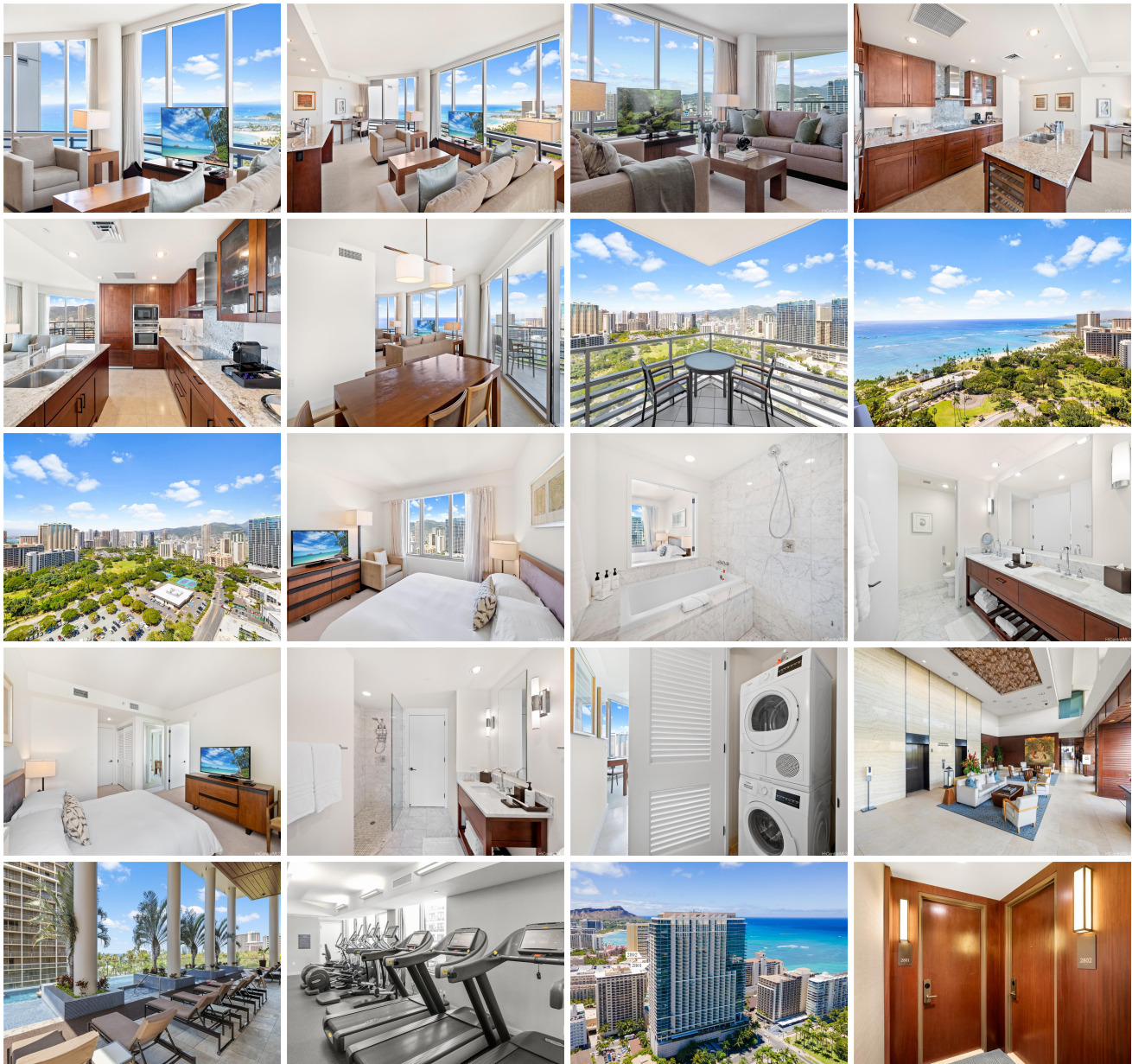


## Trump Tower Waikiki 223 Saratoga Road Unit 2801 (Corner end), Honolulu 96815 \* Trump

### **Tower Waikiki \* \$1,900,000**

Beds: <b>2</b>	MLS#: <b>202409061, FS</b>	Year Built: <b>2009</b>
Bath: <b>2/0</b>	Status: <b>Active</b>	Remodeled:
Living Sq. Ft.: <b>1,406</b>	List Date & DOM: <b>04-26-2024 &amp; 23</b>	Total Parking: <b>0</b>
Land Sq. Ft.: <b>0</b>	Condition: <b>Excellent, Above Average</b>	<a href="#">Assessed Value</a>
Lanai Sq. Ft.: <b>73</b>	Frontage:	Building: <b>\$1,176,100</b>
Sq. Ft. Other: <b>0</b>	Tax/Year: <b>\$2,268/2023</b>	Land: <b>\$781,300</b>
Total Sq. Ft. <b>1,479</b>	Neighborhood: <b>Waikiki</b>	Total: <b>\$1,957,400</b>
Maint./Assoc. <b>\$2,547 / \$0</b>	<a href="#">Flood Zone</a> : <b>Zone AE - Tool</b>	Stories / CPR: <b>21+ / No</b>
Parking: <b>None</b>	Frontage:	
<a href="#">Zoning</a> : <b>X6 - Resort Mixed Use Precinct</b>	View: <b>City, Mountain, Ocean, Sunset</b>	

**Public Remarks:** Perfectly positioned for beachside bliss, shopping, and gourmet dining. Enjoy panoramic ocean and mountain vistas from this high-floor 2-bdrm corner suite. Indulge in captivating sunset views, including Friday night fireworks. A lanai off the living-dining area invites you to savor the gentle Hawaiian breezes while soaking in the breathtaking scenery. This unit features a well-appointed kitchen, spacious bathrooms, and generous storage options. This sanctuary offers an array of luxurious amenities, including dining options, an infinity pool, gym, and spa. Do not overlook the luxurious 2-bedroom corner unit 2802 next door. Whether utilized as a private residence in paradise or enjoyed as a lavish resort getaway, indulge in unparalleled elegance and refinement. Must see! **Sale Conditions:** None **Schools:** , , \* [Request Showing](#), [Photos](#), [History](#), [Maps](#), [Deed](#), [Watch List](#), [Tax Info](#)



Address	Price	Bd & Bth	Living / Avg.	Land   Avg.	Lanai	Occ.	FL	DOM
<a href="#">223 Saratoga Road 2801 (Corner end)</a>	<a href="#">\$1,900,000</a>	2 & 2/0	1,406   \$1,351	0   \$inf	73	5%	28	23

Address	Tax   Maint.   Ass.	Assessed Land	Assessed Building	Assessed Total	Ratio	Year & Remodeled
<a href="#">223 Saratoga Road 2801 (Corner end)</a>	\$2,268   \$2,547   \$0	\$781,300	\$1,176,100	\$1,957,400	97%	2009 & NA

[223 Saratoga Road 2801 \(Corner end\)](#) - MLS#: [202409061](#) - Perfectly positioned for beachside bliss, shopping, and gourmet dining. Enjoy panoramic ocean and mountain vistas from this high-floor 2-bdrm corner suite. Indulge in captivating sunset views, including Friday night fireworks. A lanai off the living-dining area invites you to savor the gentle Hawaiian breezes while soaking in the breathtaking scenery. This unit features a well-appointed kitchen, spacious bathrooms, and generous storage options. This sanctuary offers an array of luxurious amenities, including dining options, an infinity pool, gym, and spa. Do not overlook the luxurious 2-bedroom corner unit 2802 next door. Whether utilized as a private residence in paradise or enjoyed as a lavish resort getaway, indulge in unparalleled elegance and refinement. Must see! **Region:** Metro **Neighborhood:** Waikiki **Condition:** Excellent, Above Average **Parking:** None **Total Parking:** 0 **View:** City, Mountain, Ocean, Sunset **Frontage:** **Pool:** **Zoning:** X6 - Resort Mixed Use Precinct **Sale Conditions:** None **Schools:** , , \* [Request Showing, Photos, History, Maps, Deed, Watch List, Tax Info](#)

DOM = Days on Market, Occ. = Occupancy, FL = Floor Number