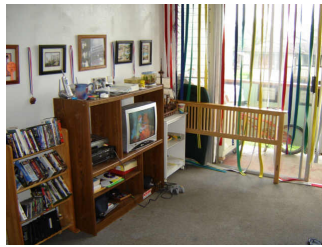


**Lalawai Hale 1046 Aheahe Street Unit 227, Wahiawa 96786 \* Lalawai Hale \* \$130,000**

Sold Price: \$136,000	Sold Date: 12-22-2005	Sold Ratio: 105%
Beds: <b>2</b>	MLS#: <b>2521314, FS</b>	Year Built: <b>1974</b>
Bath: <b>1/0</b>	Status: <b>Sold</b>	Remodeled:
Living Sq. Ft.: <b>664</b>	List Date & DOM: <b>12-09-2005 &amp; 8</b>	Total Parking: <b>1</b>
Land Sq. Ft.: <b>139,172</b>	Condition: <b>Average</b>	<a href="#">Assessed Value</a>
Lanai Sq. Ft.: <b>0</b>	Frontage:	Building: <b>\$59,800</b>
Sq. Ft. Other: <b>0</b>	Tax/Year: <b>\$25/2005</b>	Land: <b>\$17,200</b>
Total Sq. Ft. <b>664</b>	Neighborhood: <b>Whitmore Village</b>	Total: <b>\$77,000</b>
Maint./Assoc. <b>\$191 / \$0</b>	<a href="#">Flood Zone</a> : <b>Zone D - Tool</b>	Stories / CPR: / <b>No</b>
Parking: <b>Assigned, Open, Street</b>	Frontage:	
<a href="#">Zoning</a> :	View: <b>None</b>	

**Public Remarks:** If you are tired of paying high rent this home can be your dream come true. Affordable and cozy in today's market. A great opportunity if you are an investor. **Sale Conditions:** Schools: [Helemano](#), [Wahiawa](#), [Leilehua](#) \* [Request Showing](#), [Photos](#), [History](#), [Maps](#), [Deed](#), [Watch List](#), [Tax Info](#)



Address	Price	Bd & Bth	Living / Avg.	Land   Avg.	Lanai	Occ.	FL	DOM
<a href="#">1046 Aheahe Street 227</a>	<b>\$130,000</b>	2 & 1/0	664   \$196	139,172   \$1	0	0%	2	8

Address	Tax   Maint.   Ass.	Assessed Land	Assessed Building	Assessed Total	Ratio	Year & Remodeled
<a href="#">1046 Aheahe Street 227</a>	\$25   \$191   \$0	\$17,200	\$59,800	\$77,000	169%	1974 & NA

Address	Sold Price	Sold Date	Sold Ratio	Original Ratio	Sold Terms
<a href="#">1046 Aheahe Street 227</a>	\$136,000	12-22-2005	105%	105%	Cash 5000

[1046 Aheahe Street 227](#) - MLS#: [2521314](#) - If you are tired of paying high rent this home can be your dream come true. Affordable and cozy in today's market. A great opportunity if you are an investor. **Region:** Central **Neighborhood:** Whitmore Village **Condition:** Average **Parking:** Assigned, Open, Street **Total Parking:** 1 **View:** None **Frontage:** **Pool:** **Zoning:** **Sale Conditions:** Schools: [Helemano](#), [Wahiawa](#), [Leilehua](#) \* [Request Showing](#), [Photos](#), [History](#), [Maps](#), [Deed](#), [Watch List](#), [Tax Info](#)

DOM = Days on Market, Occ. = Occupancy, FL = Floor Number