

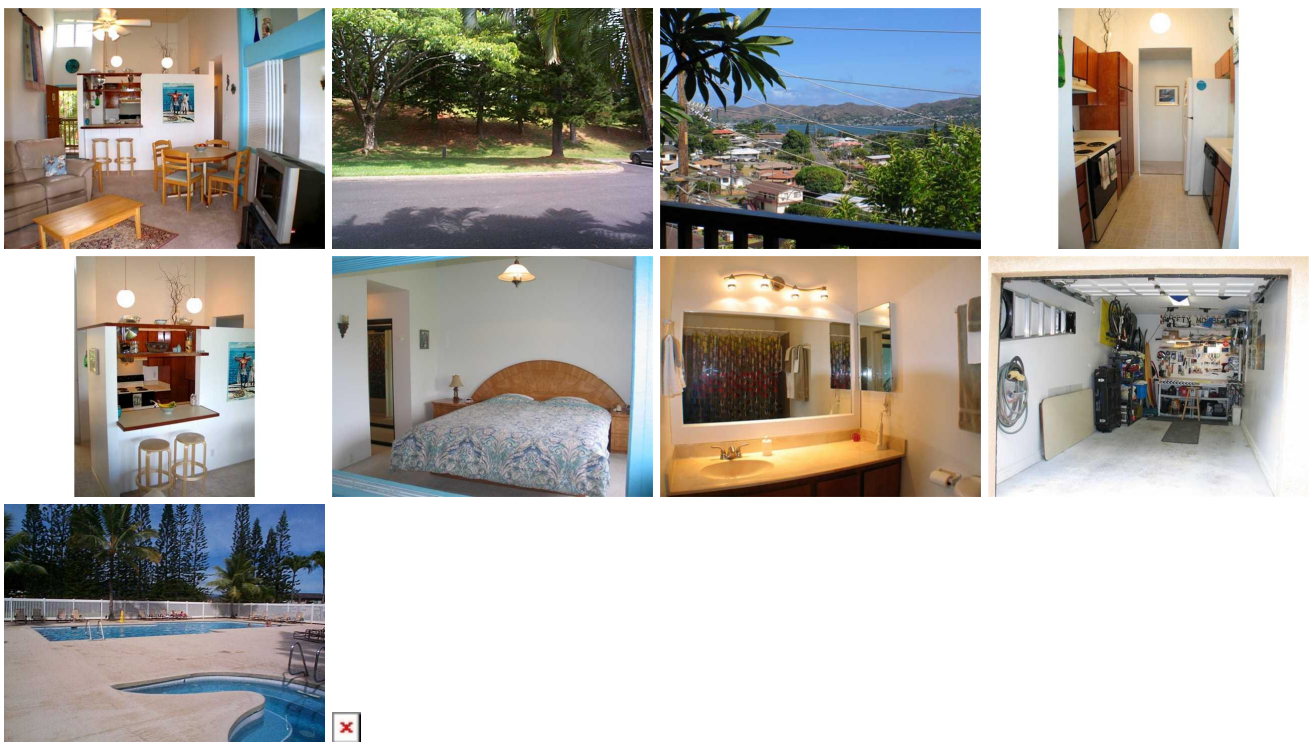
**Puu Alii 1-4 46-065 Aliipapa Place Unit 1522, Kaneohe 96744 \* Puu Alii 1-4 \* \$519,000**

Sold Price: \$515,000	Sold Date: 08-24-2007	Sold Ratio: 99%
Beds: <b>3</b>	MLS#: <a href="#">2712577</a> , FS	Year Built: <b>1979</b>
Bath: <b>2/0</b>	Status: <b>Sold</b>	Remodeled: <b>2006</b>
Living Sq. Ft.: <b>964</b>	List Date & DOM: <b>07-03-2007 &amp; 9</b>	Total Parking: <b>3</b>
Land Sq. Ft.: <b>123,972</b>	Condition: <b>Above Average</b>	<a href="#">Assessed Value</a>
Lanai Sq. Ft.: <b>84</b>	Frontage: <b>Other</b>	Building: <b>\$278,600</b>
Sq. Ft. Other: <b>0</b>	Tax/Year: <b>\$123/2007</b>	Land: <b>\$210,900</b>
Total Sq. Ft. <b>1,048</b>	Neighborhood: <b>Puualii</b>	Total: <b>\$489,500</b>
Maint./Assoc. <b>\$404 / \$0</b>	<a href="#">Flood Zone</a> : <b>Zone X - Tool</b>	Stories / CPR: / <b>No</b>
Parking: <b>Assigned, Garage, Guest, Open - 2, Tandem</b>	Frontage: <b>Other</b>	

[Zoning](#):

View: **Coastline, Mountain, Ocean, Sunrise**

**Public Remarks:** Very well maintained unit with newer floor coverings, fresh paint & new electrical fixtures & some new plumbing fixtures. A bright, airy & cheerful unit with vaulted ceilings & cooled by the trade winds and with a wonderful view of Kaneohe Bay and the Koolau mountains. Built in workshop in the garage. Great amenities and close to shopping, Windward Mall and the bus. Unit has 3 parking stalls. **Sale Conditions: Schools:** [Parker](#), [King](#), [Castle](#) \* [Request Showing](#), [Photos](#), [History](#), [Maps](#), [Deed](#), [Watch List](#), [Tax Info](#)



Address	Price	Bd & Bth	Living / Avg.	Land   Avg.	Lanai	Occ.	FL	DOM
<a href="#">46-065 Aliipapa Place 1522</a>	<a href="#">\$519,000</a>	3 & 2/0	964   \$538	123,972   \$4	84	0%	2	9

Address	Tax   Maint.   Ass.	Assessed Land	Assessed Building	Assessed Total	Ratio	Year & Remodeled
<a href="#">46-065 Aliipapa Place 1522</a>	\$123   \$404   \$0	\$210,900	\$278,600	\$489,500	106%	1979 & 2006

Address	Sold Price	Sold Date	Sold Ratio	Original Ratio	Sold Terms
<a href="#">46-065 Aliipapa Place 1522</a>	\$515,000	08-24-2007	99%	99%	Conventional

[46-065 Aliipapa Place 1522](#) - MLS#: [2712577](#) - Very well maintained unit with newer floor coverings, fresh paint & new electrical fixtures & some new plumbing fixtures. A bright, airy & cheerful unit with vaulted ceilings & cooled by the trade winds and with a wonderful view of Kaneohe Bay and the Koolau mountains. Built in workshop in the garage. Great amenities and close to shopping, Windward Mall and the bus. Unit has 3 parking stalls. **Region:** Kaneohe **Neighborhood:** Puualii **Condition:** Above Average **Parking:** Assigned, Garage, Guest, Open - 2, Tandem **Total Parking:** 3 **View:** Coastline, Mountain, Ocean, Sunrise **Frontage:** Other **Pool:** **Zoning:** **Sale Conditions: Schools:** [Parker](#), [King](#), [Castle](#) \* [Request Showing](#), [Photos](#), [History](#), [Maps](#), [Deed](#), [Watch List](#), [Tax Info](#)

DOM = Days on Market, Occ. = Occupancy, FL = Floor Number