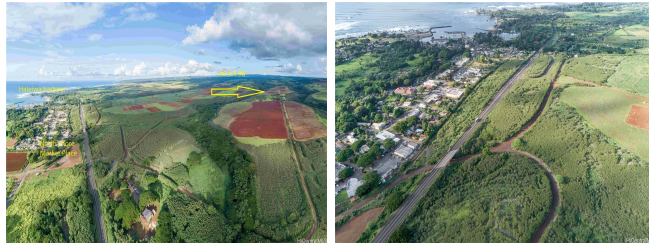


**64-486 Kamehameha Highway Unit 9-B, Haleiwa 96712 \* \$2,200,000**

Beds: <b>0</b>	MLS#: <b>202325490, FS</b>	Year Built:
Bath: <b>0/0</b>	Status: <b>Active</b>	Remodeled:
Living Sq. Ft.: <b>0</b>	List Date & DOM: <b>11-13-2023 &amp; 185</b>	Total Parking:
Land Sq. Ft.: <b>489,266</b>	Condition:	<a href="#">Assessed Value</a>
Lanai Sq. Ft.: <b>0</b>	Frontage:	Building: <b>\$0</b>
Sq. Ft. Other: <b>0</b>	Tax/Year: <b>\$0/2023</b>	Land: <b>\$0</b>
Total Sq. Ft. <b>0</b>	Neighborhood: <b>Govt/ag</b>	Total: <b>\$0</b>
Maint./Assoc. <b>\$0 / \$42</b>	<a href="#">Flood Zone</a> : <b>Zone X - Tool</b>	Stories / CPR: / <b>No</b>
Parking:	Frontage:	
<a href="#">Zoning</a> : <b>51 - AG-1 Restricted Agricultur</b>	View: <b>Mountain, Ocean</b>	

**Public Remarks:** Wall-to-wall ocean views and daily sunsets from your approx. 11.232 acres farm or ranch. Great opportunity to build a farm dwelling and live there. Yes this AG land allows for a Farm Dwelling, in a legacy master development of over 1,400 pristine North Shore acres. Includes 2 lots - 1 Kuleana lot approx. 6.863 acres TMK# 1-6-4-001:005 which allows for a farm dwelling (you can live there) and accessory AG structures (greenhouses, warehouse, sheds, equipment storage, processing facilities, and more); and a CPR farm lot with approx. 4.369 acres TMK# 1-6-4-001-014-0015 allows for Accessory Agriculture Structures to support your business. This will be a part of the up-and-coming Laukiha'a Farms Community, situated in the heart of historic and cultural Haleiwa Town near the North Shore Marketplace. This is the most strategic stop along the Kamehameha Hwy, close to the beautiful beaches, and easy freeway access to town. Enjoy the convenience of shopping, dining, and all the water activities that North Shore has to offer. Prime location to create your own piece of paradise in a farm-to-table-designed development and help feed a growing economy! Come see why this project is almost sold out. **Sale Conditions:** None **Schools:** , , \* [Request Showing](#), [Photos](#), [History](#), [Maps](#), [Deed](#), [Watch List](#), [Tax Info](#)



Address	Price	Bd & Bth	Living / Avg.	Land   Avg.	DOM
<a href="#">64-486 Kamehameha Highway 9-B</a>	<a href="#">\$2,200,000</a>	0 & 0/0	0   \$inf	489,266   \$4	185

Address	Tax   Maint.   Ass.	Assessed Land	Assessed Building	Assessed Total	Ratio	Year & Remodeled
<a href="#">64-486 Kamehameha Highway 9-B</a>	\$0   \$0   \$42	\$0	\$0	\$0	inf%	& NA

[64-486 Kamehameha Highway 9-B](#) - MLS#: [202325490](#) - Wall-to-wall ocean views and daily sunsets from your approx. 11.232 acres farm or ranch. Great opportunity to build a farm dwelling and live there. Yes this AG land allows for a Farm Dwelling, in a legacy master development of over 1,400 pristine North Shore acres. Includes 2 lots - 1 Kuleana lot approx. 6.863 acres TMK# 1-6-4-001:005 which allows for a farm dwelling (you can live there) and accessory AG structures (greenhouses, warehouse, sheds, equipment storage, processing facilities, and more); and a CPR farm lot with approx. 4.369 acres TMK# 1-6-4-001-014-0015 allows for Accessory Agriculture Structures to support your business. This will be a part of the up-and-coming Laukiha'a Farms Community, situated in the heart of historic and cultural Haleiwa Town near the North Shore Marketplace. This is the most strategic stop along the Kamehameha Hwy, close to the beautiful beaches, and easy freeway access to town. Enjoy the convenience of shopping, dining, and all the water activities that North Shore has to offer. Prime location to create your own piece of paradise in a farm-to-table-designed development and help feed a growing economy! Come see why this project is almost sold out. **Region:** North Shore **Neighborhood:** Govt/ag **Condition:** **Parking:** **Total Parking:** **View:** Mountain, Ocean **Frontage:** **Pool:** **Zoning:** 51 - AG-1 Restricted Agricultur **Sale Conditions:** None **Schools:** , , \* [Request Showing](#), [Photos](#), [History](#), [Maps](#), [Deed](#), [Watch List](#), [Tax Info](#)

DOM = Days on Market