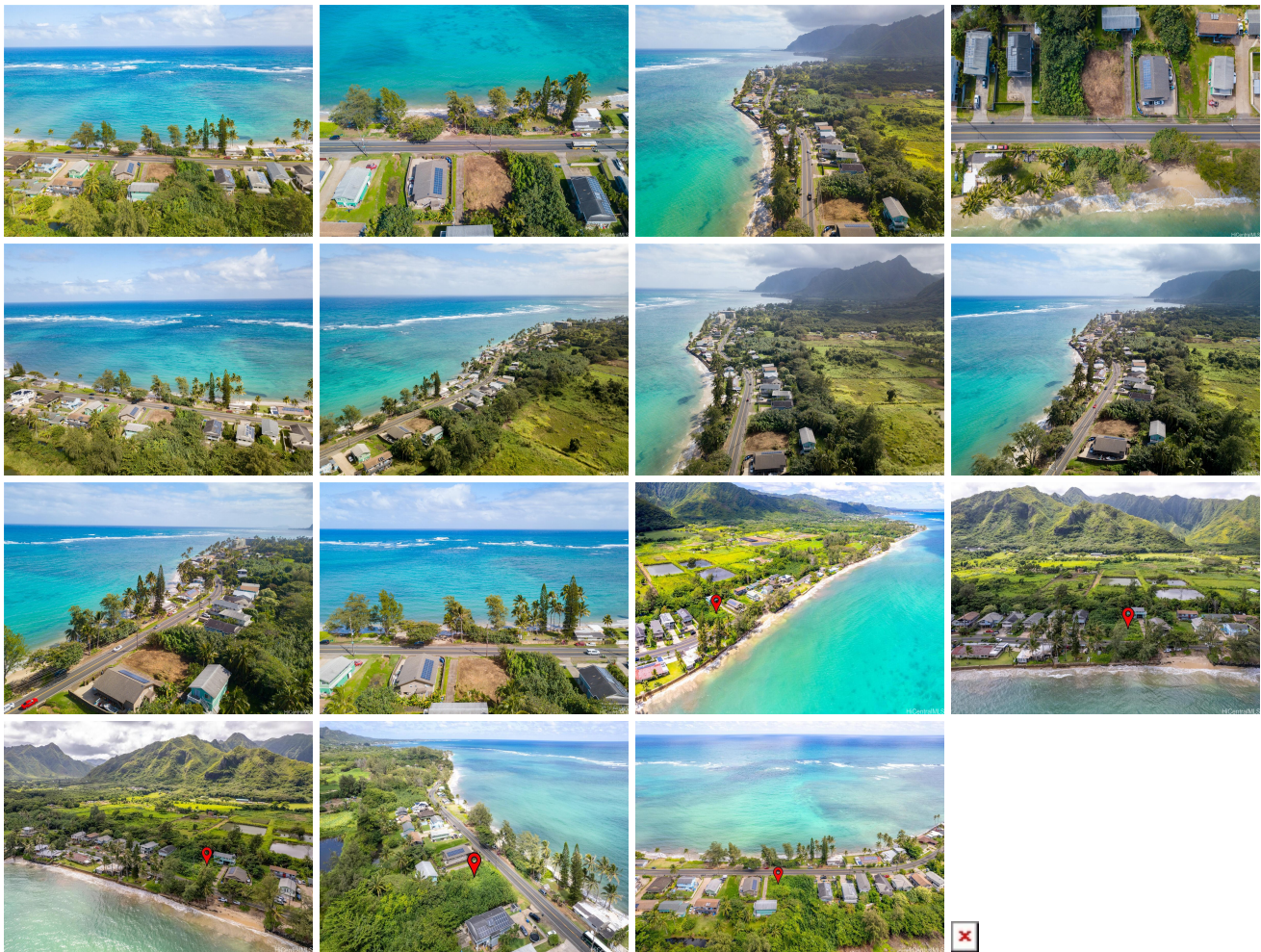


## **53-672 Kamehameha Highway, Hauula 96717 \* \$550,000**

|   |  |                                |
|---|--|--------------------------------|
| Beds: <b>0</b>  | MLS#: <b>202326782, FS</b>                         | Year Built:                    |
| Bath: <b>0/0</b>  | Status: <b>Active</b>                              | Remodeled:                     |
| Living Sq. Ft.: <b>0</b>                                      | List Date & DOM: <b>12-12-2023 &amp; 157</b>       | Total Parking:                 |
| Land Sq. Ft.: <b>5,977</b>                                    | Condition:   | <a href="#">Assessed Value</a> |
| Lanai Sq. Ft.: <b>0</b>                                       | Frontage:  | Building: <b>\$0</b>           |
| Sq. Ft. Other: <b>0</b>                                       | Tax/Year: <b>\$179/2023</b>                        | Land: <b>\$613,600</b>         |
| Total Sq. Ft. <b>0</b>  | Neighborhood: <b>Punaluu</b>                       | Total: <b>\$613,600</b>        |
| Maint./Assoc. <b>\$0 / \$0</b>                                | <a href="#">Flood Zone</a> : <b>Zone VE - Tool</b> | Stories / CPR: / <b>No</b>     |
| Parking:  | Frontage:  |                                |
| <a href="#">Zoning</a> : <b>05 - R-5 Residential District</b> | View: <b>Mountain, Ocean, Sunset</b>               |                                |

**Public Remarks:** This is a once in a lifetime opportunity to create your dream home! Situated in a countryside community called Punaluu on Oahu's north eastern shore, that features endless beaches with azure waters. There is a small community center with a few shops and a supermarket in close proximity. Hauula Forest Reserve and many hiking trails are in this area. The 5,977 sqft. lot is surrounded by Koolau Mountains and the beauty of the Pacific Ocean across the street. We just had the lot cleared and are in the process of installing a water meter. **Sale Conditions:** None **Schools:** [Hauula](#), [Kahuku](#), [Kahuku](#) \* [Request Showing](#), [Photos](#), [History](#), [Maps](#), [Deed](#), [Watch List](#), [Tax Info](#)



| Address                                   | Price                     | Bd & Bth | Living / Avg. | Land   Avg.  | DOM |
|---|---------------------------|----------|---------------|--------------|-----|
| <a href="#">53-672 Kamehameha Highway</a> | <a href="#">\$550,000</a> | 0 & 0/0  | 0   \$inf     | 5,977   \$92 | 157 |

| Address                                   | Tax   Maint.   Ass. | Assessed Land | Assessed Building | Assessed Total | Ratio | Year & Remodeled |
|---|---------------------|---------------|-------------------|----------------|-------|------------------|
| <a href="#">53-672 Kamehameha Highway</a> | \$179   \$0   \$0   | \$613,600     | \$0               | \$613,600      | 90%   | & NA             |

[53-672 Kamehameha Highway](#) - MLS#: [202326782](#) - This is a once in a lifetime opportunity to create your dream home! Situated in a countryside community called Punaluu on Oahu's north eastern shore, that features endless beaches with azure waters. There is a small community center with a few shops and a supermarket in close proximity. Hauula Forest Reserve and many hiking trails are in this area. The 5,977 sqft. lot is surrounded by Koolau Mountains and the beauty of the Pacific Ocean across the street. We just had the lot cleared and are in the process of installing a water meter. **Region:** Kaneohe **Neighborhood:** Punaluu **Condition:** **Parking:** **Total Parking:** **View:** Mountain, Ocean, Sunset **Frontage:** **Pool:** **Zoning:** 05 - R-5 Residential District **Sale Conditions:** None **Schools:** [Hauula](#), [Kahuku](#), [Kahuku](#) \* [Request Showing](#), [Photos](#), [History](#), [Maps](#), [Deed](#), [Watch List](#), [Tax Info](#)

DOM = Days on Market