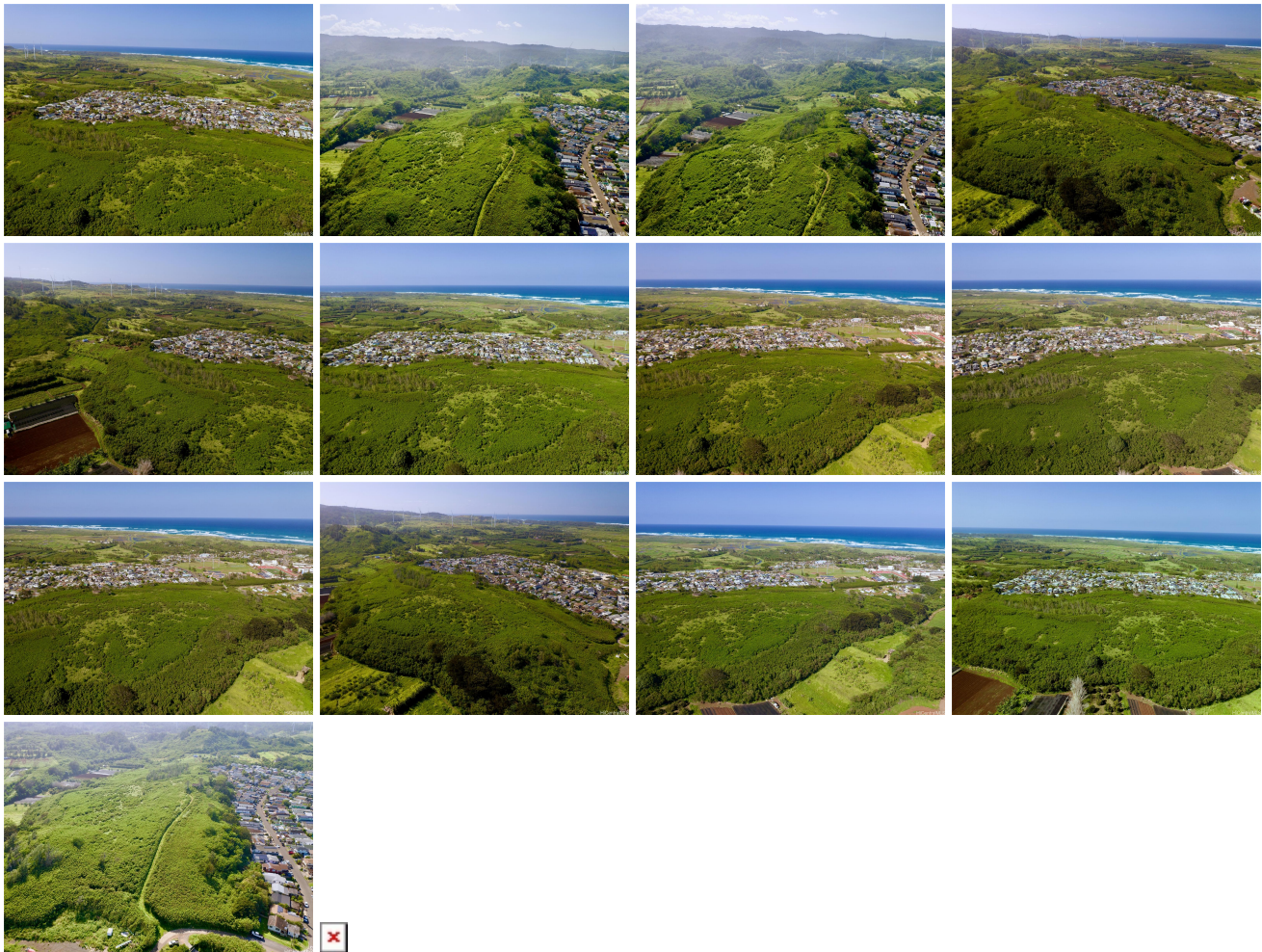


000 Pualalea Street Unit 3, Kahuku 96731 * \$979,000

Beds: 0	MLS#: 202401606, FS	Year Built:
Bath: 0/0	Status: Active	Remodeled:
Living Sq. Ft.: 0	List Date & DOM: 04-14-2024 & 33	Total Parking:
Land Sq. Ft.: 336,022	Condition:	Assessed Value
Lanai Sq. Ft.: 0	Frontage: Other	Building: \$0
Sq. Ft. Other: 0	Tax/Year: \$577/2023	Land: \$1,215,000
Total Sq. Ft. 0	Neighborhood: Kahuku	Total: \$1,215,000
Maint./Assoc. \$0 / \$0	Flood Zone : Zone X - Tool	Stories / CPR: / No
Parking:	Frontage: Other	
Zoning : 51 - AG-1 Restricted Agricultur	View: Ocean, Sunrise	

Public Remarks: North Shore Oahu 7.714 Acres of AG-1 Land with sweeping panoramic ocean views and mountain views located in Kahuku, just mauka of Kahuku Elementary School. Unit 3 is part of an 8 lot Condominium Property Regime (CPR), and 6 lots are currently available: Units 3-8, ranging in size from 5.01 acres to 15.871 acres. One of the only large land lots available out of flood and tsunami zones, with ocean views, and within a few hundred yards of Kahuku Elementary, Kahuku Middle and High School, Kahuku Hospital, in addition to many food options and Kahuku Golf Course all very close by. Minutes away to Turtle Bay Resort, BYU Hawaii, Malaekahana, Hukilau, and North Shore beaches. Sale is subject to Bankruptcy Court Approval & possible overbid. Boundary lines in photos are approximate. Very easy to view on short notice. **Sale Conditions:** Bankruptcy **Schools:** [Kahuku](#), [Kahuku](#), [Kahuku](#) * [Request Showing](#), [Photos](#), [History](#), [Maps](#), [Deed](#), [Watch List](#), [Tax Info](#)



Address	Price	Bd & Bth	Living / Avg.	Land Avg.	DOM
000 Pualalea Street 3	\$979,000	0 & 0/0	0 \$inf	336,022 \$3	33

Address	Tax Maint. Ass.	Assessed Land	Assessed Building	Assessed Total	Ratio	Year & Remodeled
000 Pualalea Street 3	\$577 \$0 \$0	\$1,215,000	\$0	\$1,215,000	81%	& NA

[000 Pualalea Street 3](#) - MLS#: [202401606](#) - North Shore Oahu 7.714 Acres of AG-1 Land with sweeping panoramic ocean views and mountain views located in Kahuku, just mauka of Kahuku Elementary School. Unit 3 is part of an 8 lot Condominium Property Regime (CPR), and 6 lots are currently available: Units 3-8, ranging in size from 5.01 acres to 15.871 acres. One of the only large land lots available out of flood and tsunami zones, with ocean views, and within a few hundred yards of Kahuku Elementary, Kahuku Middle and High School, Kahuku Hospital, in addition to many food options and Kahuku Golf Course all very close by. Minutes away to Turtle Bay Resort, BYU Hawaii, Malaekahana, Hukilau, and North Shore beaches. Sale is subject to Bankruptcy Court Approval & possible overbid. Boundary lines in photos are approximate. Very easy to view on short notice. **Region:** North Shore **Neighborhood:** Kahuku **Condition:** **Parking:** **Total Parking:** **View:** Ocean, Sunrise **Frontage:** Other **Pool:** **Zoning:** 51 - AG-1 Restricted Agricultur **Sale Conditions:** Bankruptcy **Schools:** [Kahuku](#), [Kahuku](#), [Kahuku](#) * [Request Showing](#), [Photos](#), [History](#), [Maps](#), [Deed](#), [Watch List](#), [Tax Info](#)

DOM = Days on Market