

1136 Koohoo Place, Kailua 96734 * \$2,600,000

Beds: 0

MLS#: **202404338**, FS

Year Built:

Bath: 0/0

Status: **Active Under Contract**

Remodeled:

Living Sq. Ft.: 0

List Date & DOM: **04-17-2024** &

Total Parking:

Land Sq. Ft.: **11,735**

Condition:

[Assessed Value](#)

Lanai Sq. Ft.: 0

Frontage:

Building: **\$70,000**

Sq. Ft. Other: 0

Tax/Year: **\$1,169/2023**

Land: **\$1,809,400**

Total Sq. Ft. 0

Neighborhood: **Lanikai**

Total: **\$1,879,400**

Maint./Assoc. **\$0 / \$0**

[Flood Zone](#): **Zone X - Tool**

Stories / CPR: / **No**

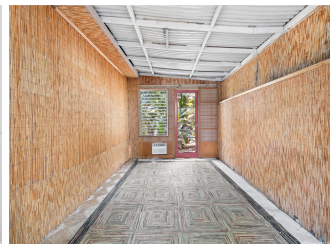
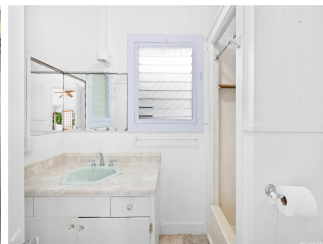
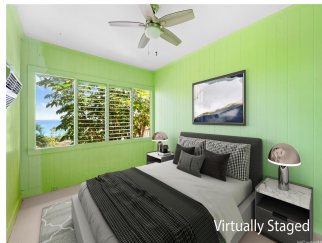
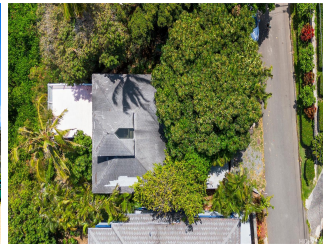
Parking:

Frontage:

[Zoning](#): **03 - R10 - Residential District**

View: **Mountain, Ocean**

Public Remarks: Prepare to be captivated by the mesmerizing ocean views from one of Oahu's most prestigious neighborhoods Lanikai, which can be translated to "heavenly sea". Situated on a generous parcel of land with close to 12,000 sqft, this property offers ample space to bring your vision to life. Whether you're dreaming of expansive gardens, outdoor entertainment areas, or simply room to roam, this large land parcel provides endless possibilities for your ideal oasis near the ocean. Experience a kaleidoscope of ocean colors from the comfort of your own home. With its prime location, you'll witness a myriad of hues dancing across the waves, offering a daily spectacle that's both stunning and serene. The ultimate island living experience is awaiting you, with this remarkable property offering the perfect blend of luxury and coastal charm. Don't miss this opportunity! **Sale Conditions:** None **Schools:** [Kainalu](#), [Kailua](#), [Kalaheo](#) * [Request Showing](#), [Photos](#), [History](#), [Maps](#), [Deed](#), [Watch List](#), [Tax Info](#)





Address	Price	Bd & Bth	Living / Avg.	Land Avg.	DOM
1136 Koohoo Place	\$2,600,000	0 & 0/0	0 \$inf	11,735 \$222	0

Address	Tax Maint. Ass.	Assessed Land	Assessed Building	Assessed Total	Ratio	Year & Remodeled
1136 Koohoo Place	\$1,169 \$0 \$0	\$1,809,400	\$70,000	\$1,879,400	138%	& NA

[1136 Koohoo Place](#) - MLS#: [202404338](#) - Prepare to be captivated by the mesmerizing ocean views from one of Oahu's most prestigious neighborhoods Lanikai, which can be translated to "heavenly sea". Situated on a generous parcel of land with close to 12,000 sqft, this property offers ample space to bring your vision to life. Whether you're dreaming of expansive gardens, outdoor entertainment areas, or simply room to roam, this large land parcel provides endless possibilities for your ideal oasis near the ocean. Experience a kaleidoscope of ocean colors from the comfort of your own home. With its prime location, you'll witness a myriad of hues dancing across the waves, offering a daily spectacle that's both stunning and serene. The ultimate island living experience is awaiting you, with this remarkable property offering the perfect blend of luxury and coastal charm. Don't miss this opportunity! **Region:** Kailua **Neighborhood:** Lanikai **Condition:** **Parking:** **Total** **Parking:** **View:** Mountain, Ocean **Frontage:** **Pool:** **Zoning:** 03 - R10 - Residential District **Sale Conditions:** None **Schools:** [Kainalu](#), [Kailua](#), [Kalaheo](#) * [Request Showing](#), [Photos](#), [History](#), [Maps](#), [Deed](#), [Watch List](#), [Tax Info](#)

DOM = Days on Market