

1615A Silva Street, Honolulu 96819 * \$2,800,000 * Originally \$3,950,000

Beds: **0**

MLS#: **202311855, FS**

Year Built: **1958**

Bath: **0/0**

Status: **Active Under Contract**

Remodeled:

Living Sq. Ft.: **7,450**

List Date & DOM: **05-31-2023 & 237**

Total Parking: **6**

Land Sq. Ft.: **8,058**

Condition: **Fair**

[Assessed Value](#)

Lanai Sq. Ft.: **0**

Frontage: **Other**

Building: **\$292,200**

Sq. Ft. Other: **0**

Tax/Year: **\$2,418/2023**

Land: **\$2,104,400**

Total Sq. Ft. **7,450**

Neighborhood: **Kapalama**

Total: **\$2,396,600**

Maint./Assoc. **\$0 / \$0**

[Flood Zone](#): **Zone X - Tool**

Stories / CPR: **Two / No**

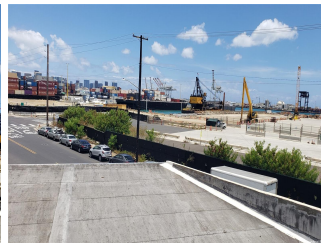
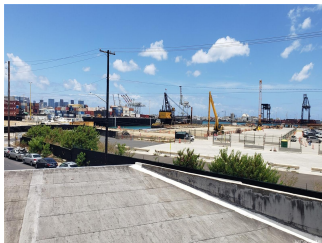
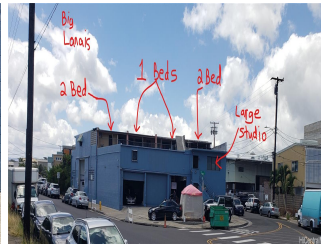
Parking: **Assigned, Open**

Frontage: **Other**

[Zoning](#): **IM - Industrial Mixed Use**

View: **City**

Public Remarks: 5 large bays on 2 different streets and a corner to maximize revenue!! This is an amazing opportunity. Next to the newly built and up-and-coming Amazon facilities (14 acres up the street bought by Amazon). Rare fee simple warehouse space with four upstairs apartments with views, on this large corner lot with parking. Walk-in cooler and freezer. This sale includes 2 TMK's (1-1-2-006-001-0000 AND 1-1-2-006-059-0000). 1615A and 1615 Silva St. Honolulu, HI 96819. 5,440 sq ft warehouse space for the two tmk's and 2,040 sq ft for the four apartments consisting of two 2 bed, 1 bath units, and two 1 bed 1 bath units. Total of 7,480 sq ft. Warehouse has 20 ft wall height and an 8 ft wall height. Properties will be vacant at closing. Buyers, buyer's agents, and buyers' consultants do their own due diligence for use and potential. Seller to do a 1031 exchange at no cost to the Buyer. So many way to generate revenue from these two TMK's. **Sale Conditions:** None **Schools:** , , * [Request Showing](#), [Photos](#), [History](#), [Maps](#), [Deed](#), [Watch List](#), [Tax Info](#)



Address	Price	Bd & Bth	Living / Avg.	Land Avg.	DOM
1615A Silva Street	\$2,800,000	0 & 0/0	7,450 \$inf	8,058 \$347	237

Address	Tax Maint. Ass.	Assessed Land	Assessed Building	Assessed Total	Ratio	Year & Remodeled
1615A Silva Street	\$2,418 \$0 \$0	\$2,104,400	\$292,200	\$2,396,600	117%	1958 & NA

[1615A Silva Street](#) - MLS#: [202311855](#) - Original price was \$3,950,000 - 5 large bays on 2 different streets and a corner to maximize revenue!! This is an amazing opportunity. Next to the newly built and up-and-coming Amazon facilities (14 acres up the street bought by Amazon). Rare fee simple warehouse space with four upstairs apartments with views, on this large corner lot with parking. Walk-in cooler and freezer. This sale includes 2 TMK's (1-1-2-006-001-0000 AND 1-1-2-006-059-0000). 1615A and 1615 Silva St. Honolulu, HI 96819. 5,440 sq ft warehouse space for the two tmk's and 2,040 sq ft for the four apartments consisting of two 2 bed, 1 bath units, and two 1 bed 1 bath units. Total of 7,480 sq ft. Warehouse has 20 ft wall height and an 8 ft wall height. Properties will be vacant at closing. Buyers, buyer's agents, and buyers' consultants do their own due diligence for use and potential. Seller to do a 1031 exchange at no cost to the Buyer. So many way to generate revenue from these two TMK's. **Region:** Metro **Neighborhood:** Kapalama **Condition:** Fair **Parking:** Assigned, Open **Total Parking:** 6 **View:** City **Frontage:** Other **Pool:** **Zoning:** IM - Industrial Mixed Use **Sale Conditions:** None **Schools:** , , * [Request Showing](#), [Photos](#), [History](#), [Maps](#), [Deed](#), [Watch List](#), [Tax Info](#)

DOM = Days on Market