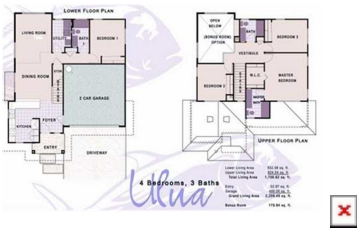


**86306 Pokaiikena Way, Waianae 96792 \* \$420,000 \* Originally \$500,000**

Sold Price: \$441,180	Sold Date: 08-31-2011	Sold Ratio: 105%
Beds: <b>4</b>	MLS#: <b>1101394, FS</b>	Year Built: <b>2009</b>
Bath: <b>3/0</b>	Status: <b>Sold</b>	Remodeled:
Living Sq. Ft.: <b>1,757</b>	List Date & DOM: <b>02-03-2011 &amp; 148</b>	Total Parking: <b>0</b>
Land Sq. Ft.: <b>5,250</b>	Condition: <b>Excellent</b>	<a href="#">Assessed Value</a>
Lanai Sq. Ft.: <b>0</b>	Frontage:	Building: <b>\$0</b>
Sq. Ft. Other: <b>53</b>	Tax/Year: <b>\$125/2009</b>	Land: <b>\$154,900</b>
Total Sq. Ft. <b>1,810</b>	Neighborhood:	Total: <b>\$154,900</b>
Maint./Assoc. <b>\$0 / \$0</b>	<a href="#">Flood Zone</a> : <b>Zone D - Tool</b>	Stories / CPR: <b>Two / No</b>
Parking: <b>Garage</b>	Frontage:	
<a href="#">Zoning</a> : <b>05 - R-5 Residential District</b>	View: <b>Mountain</b>	

**Public Remarks:** Lot #63:Awesome Floor Plan with great views. \$10,000 Builder Credit for upgrades, options or closing costs. Front Yard Landscaping Included, backyard top soil, Outstanding Features, ceiling fans included, perimeter fencing, dishwasher or washer/dryer, No Association Dues. Broker Courtesy 3%. Models open Tues-Sun 12 Noon to 5:00 PM **Sale Conditions: Schools:** [Leihoku](#), [Waianae](#), [Waianae](#) \* [Request Showing](#), [Photos](#), [History](#), [Maps](#), [Deed](#), [Watch List](#), [Tax Info](#)



Address	Price	Bd & Bth	Living / Avg.	Land   Avg.	DOM
<a href="#">86306 Pokaiikena Way</a>	<b>\$420,000</b>	4 & 3/0	1,757   \$239	5,250   \$80	148

Address	Tax   Maint.   Ass.	Assessed Land	Assessed Building	Assessed Total	Ratio	Year & Remodeled
<a href="#">86306 Pokaiikena Way</a>	\$125   \$0   \$0	\$154,900	\$0	\$154,900	271%	2009 & NA

Address	Sold Price	Sold Date	Sold Ratio	Original Ratio	Sold Terms
<a href="#">86306 Pokaiikena Way</a>	\$441,180	08-31-2011	105%	88%	VA

**86306 Pokaiikena Way** - MLS#: [1101394](#) - Original price was \$500,000 - Lot #63:Awesome Floor Plan with great views. \$10,000 Builder Credit for upgrades, options or closing costs. Front Yard Landscaping Included, backyard top soil, Outstanding Features, ceiling fans included, perimeter fencing, dishwasher or washer/dryer, No Association Dues. Broker Courtesy 3%. Models open Tues-Sun 12 Noon to 5:00 PM **Region:** Leeward **Neighborhood:** **Condition:** Excellent **Parking:** Garage **Total Parking:** 0 **View:** Mountain **Frontage:** **Pool:** None **Zoning:** 05 - R-5 Residential District **Sale Conditions:** **Schools:** [Leihoku](#), [Waianae](#), [Waianae](#) \* [Request Showing](#), [Photos](#), [History](#), [Maps](#), [Deed](#), [Watch List](#), [Tax Info](#)

DOM = Days on Market