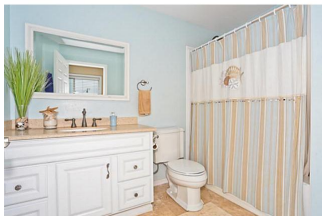


**45-004 Bayside Place, Kaneohe 96744 \* \$975,000 \* Originally \$1,075,000**

Sold Price: \$960,000	Sold Date: 08-28-2013	Sold Ratio: 98%
Beds: <b>4</b>	MLS#: <b><u>1302375</u>, FS</b>	Year Built: <b>1956</b>
Bath: <b>3/0</b>	Status: <b>Sold</b>	Remodeled: <b>2005</b>
Living Sq. Ft.: <b>2,209</b>	List Date & DOM: <b>03-03-2013 &amp; 178</b>	Total Parking: <b>0</b>
Land Sq. Ft.: <b>6,534</b>	Condition: <b>Excellent</b>	<a href="#">Assessed Value</a>
Lanai Sq. Ft.: <b>268</b>	Frontage: <b>Ocean, Waterfront</b>	Building: <b>\$299,400</b>
Sq. Ft. Other: <b>520</b>	Tax/Year: <b>\$265/2012</b>	Land: <b>\$609,200</b>
Total Sq. Ft. <b>2,997</b>	Neighborhood: <b>Mahalani</b>	Total: <b>\$908,600</b>
Maint./Assoc. <b>\$0 / \$0</b>	<a href="#">Flood Zone</a> : <b>Zone X - Tool</b>	Stories / CPR: <b>Two / No</b>
Parking: <b>2 Car, Driveway, Garage</b>	Frontage: <b>Ocean, Waterfront</b>	
<a href="#">Zoning</a> : <b>05 - R-5 Residential District</b>	View: <b>Coastline, Mountain, Ocean, Sunrise</b>	

**Public Remarks:** NEW PRICE! MUST SEE! Excellent FAMILY HOME or INCOME PROPERTY! Call For Details. Nestled in Kaneohe Bay, this two story, 4 bdrm, 3 bath home offers fantastic ocean and mountain views from upper and lower lanai's. Exquisite details include cherry cabinetry, granite counters, quartzite flooring, lighting, and a large fenced grassy yard perfect for your next family BBQ. **Sale Conditions:** None **Schools:** [Parker](#), [King](#), [Castle](#) \* [Request Showing](#), [Photos](#), [History](#), [Maps](#), [Deed](#), [Watch List](#), [Tax Info](#)



Address	Price	Bd & Bth	Living / Avg.	Land   Avg.	DOM
<a href="#">45-004 Bayside Place</a>	<b>\$975,000</b>	4 & 3/0	2,209   \$441	6,534   \$149	178

Address	Tax   Maint.   Ass.	Assessed Land	Assessed Building	Assessed Total	Ratio	Year & Remodeled
<a href="#">45-004 Bayside Place</a>	\$265   \$0   \$0	\$609,200	\$299,400	\$908,600	107%	1956 & 2005

Address	Sold Price	Sold Date	Sold Ratio	Original Ratio	Sold Terms
<a href="#">45-004 Bayside Place</a>	\$960,000	08-28-2013	98%	89%	Conventional

[45-004 Bayside Place](#) - MLS#: [1302375](#) - Original price was \$1,075,000 - NEW PRICE! MUST SEE! Excellent FAMILY HOME or INCOME PROPERTY! Call For Details. Nestled in Kaneohe Bay, this two story, 4 bdrm, 3 bath home offers fantastic ocean and mountain views from upper and lower lanai's. Exquisite details include cherry cabinetry, granite counters, quartzite flooring, lighting, and a large fenced grassy yard perfect for your next family BBQ. **Region:** Kaneohe **Neighborhood:** Mahalani **Condition:** Excellent **Parking:** 2 Car, Driveway, Garage **Total Parking:** 0 **View:** Coastline, Mountain, Ocean, Sunrise **Frontage:** Ocean, Waterfront **Pool:** None **Zoning:** 05 - R-5 Residential District **Sale Conditions:** None **Schools:** [Parker, King, Castle](#) \* [Request Showing](#), [Photos](#), [History](#), [Maps](#), [Deed](#), [Watch List](#), [Tax Info](#)

DOM = Days on Market