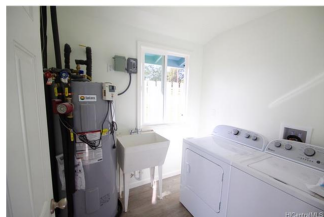
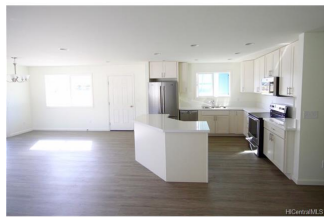
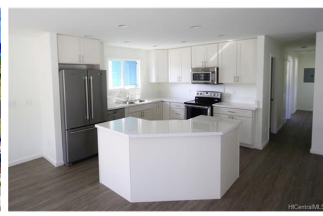


## **56-419 Kamehameha Highway Unit NC-44, Kahuku 96731 \* \$765,000**

Sold Price: \$750,000	Sold Date: 06-08-2017	Sold Ratio: 98%
Beds: <b>3</b>	MLS#: <b><u>201703218</u>, FS</b>	Year Built: <b>2016</b>
Bath: <b>2/0</b>	Status: <b>Sold</b>	Remodeled:
Living Sq. Ft.: <b>1,296</b>	List Date & DOM: <b>02-20-2017 &amp; 75</b>	Total Parking: <b>4</b>
Land Sq. Ft.: <b>5,681</b>	Condition: <b>Excellent</b>	<a href="#">Assessed Value</a>
Lanai Sq. Ft.: <b>608</b>	Frontage: <b>Golf Course</b>	Building: <b>\$1</b>
Sq. Ft. Other: <b>0</b>	Tax/Year: <b>\$71/2016</b>	Land: <b>\$221,000</b>
Total Sq. Ft. <b>1,904</b>	Neighborhood: <b>Kahuku</b>	Total: <b>\$211,000</b>
Maint./Assoc. <b>\$0 / \$0</b>	<a href="#">Flood Zone</a> : <b>Zone AE - <u>Tool</u></b>	Stories / CPR: <b>One / Yes</b>
Parking: <b>3 Car+</b>	Frontage: <b>Golf Course</b>	
<a href="#">Zoning</a> : <b>05 - R-5 Residential District</b>	View: <b>Golf Course, Mountain</b>	

**Public Remarks:** NORTH SHORE NEW CONSTRUCTION, OCEANSIDE OF KAMEHAMEHA HWY, LOCATED BY GOLF COURSE & SECLUDED MILE LONG WHITE SANDY BEACH - UNDER \$800,000! NC-44 is a brand new, just completed 3 bedroom 2 bathroom home in the soon to be gated Kahuku Village, adjacent to the Kahuku Golf Course and a beautiful mile long white sandy beach. Enjoy country life at it's finest. A short drive to Turtle Bay Resort, championship golf, world class surfing, Bonzai Pipeline, and Waimea Bay. Brand new stainless steel appliances, beautiful white quartz countertops, air conditioning, nice sized lot, and a spacious lanai. One of the only newly-built oceanside North Shore homes under \$800,000 located this close to the beach! Very easy to view on short notice. Welcome home to paradise! **Sale Conditions:** None **Schools:** [Kahuku](#), [Kahuku](#), [Kahuku](#) \* [Request Showing](#), [Photos](#), [History](#), [Maps](#), [Deed](#), [Watch List](#), [Tax Info](#)





Address	Price	Bd & Bth	Living / Avg.	Land   Avg.	DOM
<a href="#">56-419 Kamehameha Highway NC-44</a>	<a href="#">\$765,000</a>	3 & 2/0	1,296   \$590	5,681   \$135	75

Address	Tax   Maint.   Ass.	Assessed Land	Assessed Building	Assessed Total	Ratio	Year & Remodeled
<a href="#">56-419 Kamehameha Highway NC-44</a>	\$71   \$0   \$0	\$221,000	\$1	\$211,000	363%	2016 & NA

Address	Sold Price	Sold Date	Sold Ratio	Original Ratio	Sold Terms
<a href="#">56-419 Kamehameha Highway NC-44</a>	\$750,000	06-08-2017	98%	98%	Conventional

<p><a href="#">56-419 Kamehameha Highway NC-44</a> - MLS#: <a href="#">201703218</a> - NORTH SHORE NEW CONSTRUCTION, OCEANSIDE OF KAMEHAMEHA HWY, LOCATED BY GOLF COURSE &amp; SECLUDED MILE LONG WHITE SANDY BEACH - UNDER \$800,000! NC-44 is a brand new, just completed 3 bedroom 2 bathroom home in the soon to be gated Kahuku Village, adjacent to the Kahuku Golf Course and a beautiful mile long white sandy beach. Enjoy country life at it's finest. A short drive to Turtle Bay Resort, championship golf, world class surfing, Bonzai Pipeline, and Waimea Bay. Brand new stainless steel appliances, beautiful white quartz countertops, air conditioning, nice sized lot, and a spacious lanai. One of the only newly-built oceanside North Shore homes under \$800,000 located this close to the beach! Very easy to view on short notice. Welcome home to paradise!</p> <p><b>Region:</b> North Shore <b>Neighborhood:</b> Kahuku <b>Condition:</b> Excellent <b>Parking:</b> 3 Car+ <b>Total Parking:</b> 4 <b>View:</b> Golf Course, Mountain <b>Frontage:</b> Golf Course <b>Pool:</b> None <b>Zoning:</b> 05 - R-5 Residential District <b>Sale Conditions:</b> None <b>Schools:</b> <a href="#">Kahuku</a>, <a href="#">Kahuku</a>, <a href="#">Kahuku</a> * <a href="#">Request Showing</a>, <a href="#">Photos</a>, <a href="#">History</a>, <a href="#">Maps</a>, <a href="#">Deed</a>, <a href="#">Watch List</a>, <a href="#">Tax Info</a></p>					
--	--	--	--	--	--

DOM = Days on Market