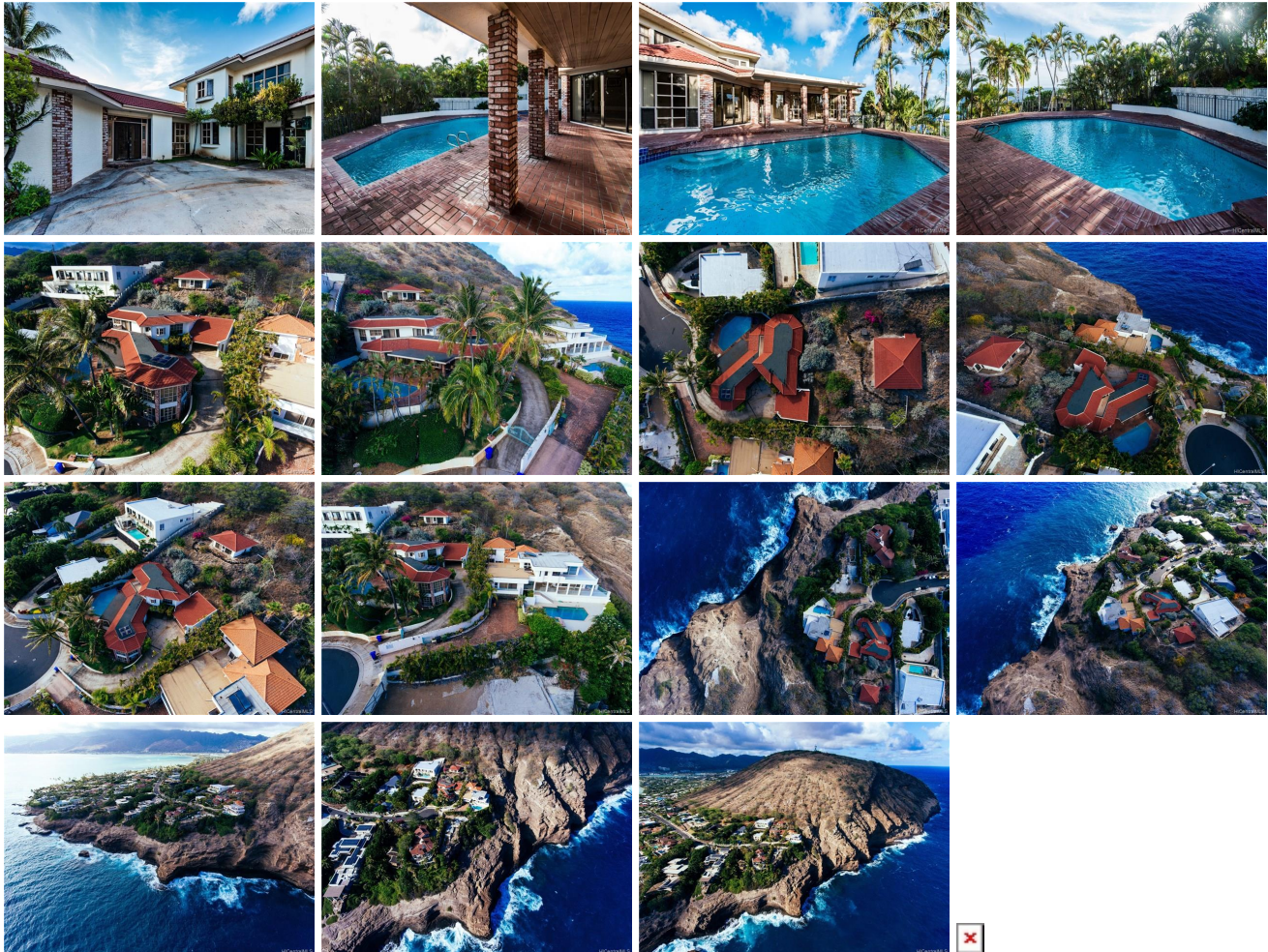


3 Lumahai Street, Honolulu 96825 * \$1,950,000

Sold Price: \$1,800,000	Sold Date: 12-21-2018	Sold Ratio: 92%
Beds: 3	MLS#: 201816029, FS	Year Built: 1977
Bath: 2/1	Status: Sold	Remodeled:
Living Sq. Ft.: 3,860	List Date & DOM: 06-15-2018 & 31	Total Parking: 4
Land Sq. Ft.: 21,834	Condition: Fair, Needs Major Repair	Assessed Value
Lanai Sq. Ft.: 0	Frontage: Conservation, Other	Building: \$809,800
Sq. Ft. Other: 528	Tax/Year: \$1,325/2018	Land: \$1,670,300
Total Sq. Ft. 4,388	Neighborhood: Koko Kai	Total: \$2,480,100
Maint./Assoc. \$0 / \$0	Flood Zone : Zone D - Tool	Stories / CPR: Two / No
Parking: 3 Car+, Driveway, Garage, Street	Frontage: Conservation, Other	View: Diamond Head, Mountain, Ocean, Sunset
Zoning : 03 - R10 - Residential District		

Public Remarks: This property is located on a quiet cul-de-sac in Portlock, one of the most prestigious neighborhoods on Oahu. Situated on a hillside, this 21,834 sq. ft. property offers captivating views of the endless ocean horizon, Diamond Head, and sunset. The hillside behind the home is a nature preserve, providing residents with ample privacy. This 3,860 sq. ft. two story home is in need of some repair and has three bedrooms and two and one-half baths. It boasts a large pool, vaulted high ceilings, a large chandelier, two-story-tall windows, stucco and masonry accents, and a private cottage. **Sale Conditions:** None **Schools:** [Koko Head](#), [Niu Valley](#), [Kaiser](#) * [Request Showing](#), [Photos](#), [History](#), [Maps](#), [Deed](#), [Watch List](#), [Tax Info](#)



Address	Price	Bd & Bth	Living / Avg.	Land Avg.	DOM
3 Lumahai Street	\$1,950,000	3 & 2/1	3,860 \$505	21,834 \$89	31

Address	Tax Maint. Ass.	Assessed Land	Assessed Building	Assessed Total	Ratio	Year & Remodeled
3 Lumahai Street	\$1,325 \$0 \$0	\$1,670,300	\$809,800	\$2,480,100	79%	1977 & NA

Address	Sold Price	Sold Date	Sold Ratio	Original Ratio	Sold Terms
3 Lumahai Street	\$1,800,000	12-21-2018	92%	92%	Cash

[3 Lumahai Street](#) - MLS#: [201816029](#) - This property is located on a quiet cul-de-sac in Portlock, one of the most prestigious neighborhoods on Oahu. Situated on a hillside, this 21,834 sq. ft. property offers captivating views of the endless ocean horizon, Diamond Head, and sunset. The hillside behind the home is a nature preserve, providing residents with ample privacy. This 3,860 sq. ft. two story home is in need of some repair and has three bedrooms and two and one-half baths. It boasts a large pool, vaulted high ceilings, a large chandelier, two-story-tall windows, stucco and masonry accents, and a private cottage. **Region:** Hawaii Kai **Neighborhood:** Koko Kai **Condition:** Fair, Needs Major Repair **Parking:** 3 Car+, Driveway, Garage, Street **Total Parking:** 4 **View:** Diamond Head, Mountain, Ocean, Sunset **Frontage:** Conservation, Other **Pool:** In Ground, Spa/HotTub, Tile **Zoning:** 03 - R10 - Residential District **Sale Conditions:** None **Schools:** [Koko Head](#), [Niu Valley](#), [Kaiser](#) * [Request Showing](#), [Photos](#), [History](#), [Maps](#), [Deed](#), [Watch List](#), [Tax Info](#)

DOM = Days on Market