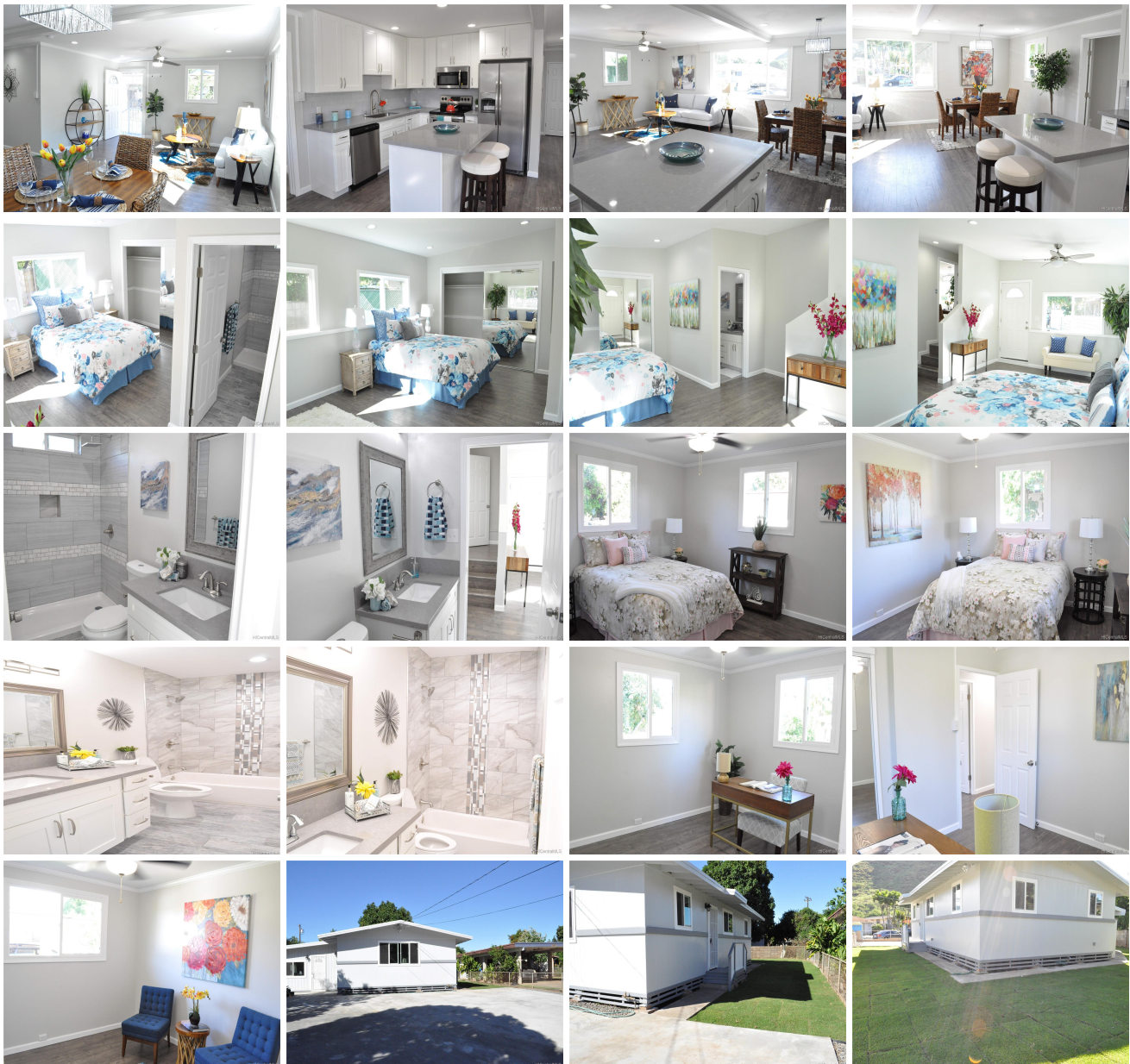


## **85-346 Imipono Place, Waianae 96792 \* \$490,000**

Sold Price: \$490,000	Sold Date: 02-14-2019	Sold Ratio: 100%
Beds: <b>4</b>	MLS#: <b><u>201830809</u>, FS</b>	Year Built: <b>1962</b>
Bath: <b>2/0</b>	Status: <b>Sold</b>	Remodeled: <b>2018</b>
Living Sq. Ft.: <b>1,344</b>	List Date & DOM: <b>12-05-2018 &amp; 13</b>	Total Parking: <b>4</b>
Land Sq. Ft.: <b>5,000</b>	Condition: <b>Above Average, Excellent</b>	<a href="#">Assessed Value</a>
Lanai Sq. Ft.: <b>0</b>	Frontage:	Building: <b>\$62,600</b>
Sq. Ft. Other: <b>0</b>	Tax/Year: <b>\$103/2018</b>	Land: <b>\$290,000</b>
Total Sq. Ft. <b>1,344</b>	Neighborhood: <b>Waianae</b>	Total: <b>\$352,600</b>
Maint./Assoc. <b>\$0 / \$0</b>	<a href="#">Flood Zone</a> : <b>Zone X - Tool</b>	Stories / CPR: <b>One / No</b>
Parking: <b>3 Car+, Boat, Driveway</b>	Frontage:	
<a href="#">Zoning</a> : <b>05 - R-5 Residential District</b>	View: <b>Mountain</b>	

**Public Remarks:** LIKE NEW! Elegant full renovation! Open floor plan as you walk through the front door. Kitchen boasts all stainless steel appliances with a spacious island, quartz counter top and lots of cabinet space. Recessed lighting throughout, new double pane windows, ceiling fans in all bedrooms and living room. Wall tiles in bathroom over tub and tile floors. A few steps down leads you to the spacious master bedroom with full bath and wall tiles from floor to ceiling in walk-in shower with floor tiles. Extended concrete driveway large enough for 3-4 cars and a boat. Welcome home! Tax records does not match square footage. Verifying info. **Sale Conditions:** None **Schools:** , , \* [Request Showing](#), [Photos](#), [History](#), [Maps](#), [Deed](#), [Watch List](#), [Tax Info](#)





Address	Price	Bd & Bth	Living / Avg.	Land   Avg.	DOM
<a href="#">85-346 Imipono Place</a>	<b>\$490,000</b>	4 & 2/0	1,344   \$365	5,000   \$98	13

Address	Tax   Maint.   Ass.	Assessed Land	Assessed Building	Assessed Total	Ratio	Year & Remodeled
<a href="#">85-346 Imipono Place</a>	\$103   \$0   \$0	\$290,000	\$62,600	\$352,600	139%	1962 & 2018

Address	Sold Price	Sold Date	Sold Ratio	Original Ratio	Sold Terms
<a href="#">85-346 Imipono Place</a>	\$490,000	02-14-2019	100%	100%	Conventional

<p><a href="#">85-346 Imipono Place</a> - MLS#: <a href="#">201830809</a> - LIKE NEW! Elegant full renovation! Open floor plan as you walk through the front door. Kitchen boasts all stainless steel appliances with a spacious island, quartz counter top and lots of cabinet space. Recessed lighting throughout, new double pane windows, ceiling fans in all bedrooms and living room. Wall tiles in bathroom over tub and tile floors. A few steps down leads you to the spacious master bedroom with full bath and wall tiles from floor to ceiling in walk-in shower with floor tiles. Extended concrete driveway large enough for 3-4 cars and a boat. Welcome home! Tax records does not match square footage. Verifying info. <b>Region:</b> Leeward <b>Neighborhood:</b> Waianae <b>Condition:</b> Above Average, Excellent <b>Parking:</b> 3 Car+, Boat, Driveway <b>Total Parking:</b> 4 <b>View:</b> Mountain <b>Frontage:</b> <b>Pool:</b> None <b>Zoning:</b> 05 - R-5 Residential District <b>Sale Conditions:</b> None <b>Schools:</b> , , * <a href="#">Request Showing</a>, <a href="#">Photos</a>, <a href="#">History</a>, <a href="#">Maps</a>, <a href="#">Deed</a>, <a href="#">Watch List</a>, <a href="#">Tax Info</a></p>					
--	--	--	--	--	--

DOM = Days on Market