

**67-221A Kuhi Street, Waialua 96791 \* \$869,000 \* Originally \$899,000**

Sold Price: \$850,000

Sold Date: 04-24-2019

Sold Ratio: 98%

Beds: **3**

MLS#: **201900658, FS**

Year Built: **2018**

Bath: **2/0**

Status: **Sold**

Remodeled:

Living Sq. Ft.: **1,810**

List Date & DOM: **01-08-2019 & 72**

Total Parking: **5**

Land Sq. Ft.: **3,837**

Condition: **Excellent**

[Assessed Value](#)

Lanai Sq. Ft.: **192**

Frontage:

Building: **\$0**

Sq. Ft. Other: **128**

Tax/Year: **\$152/2018**

Land: **\$568,200**

Total Sq. Ft. **2,130**

Neighborhood: **Waialua**

Total: **\$568,200**

Maint./Assoc. **\$0 / \$0**

[Flood Zone](#): **Zone D - Tool**

Stories / CPR: **Two / Yes**

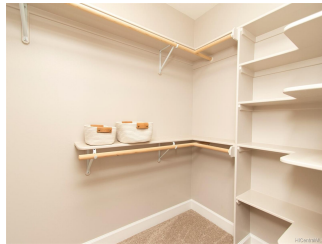
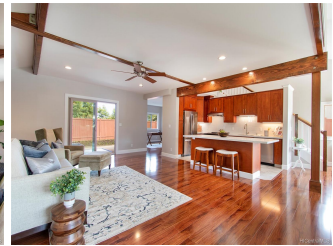
Parking: **3 Car+, Driveway, Garage**

Frontage:

[Zoning](#): **05 - R-5 Residential District**

View: **Garden, Mountain**

**Public Remarks:** This Brand New Custom home features vaulted pine ceilings, open kitchen with stainless steel appliances, cherry cabinets and quartz counter tops. A formal dining area can also be used as family room that steps out on to 160sqft covered lanai and a fully fenced back yard perfect for entertaining. 3bed/2bath home with a large 2 car garage with additional 128sqft of storage. **Sale Conditions:** None **Schools:** [Waialua](#), [Waialua](#), [Waialua](#) \* [Request Showing](#), [Photos](#), [History](#), [Maps](#), [Deed](#), [Watch List](#), [Tax Info](#)





Address	Price	Bd & Bth	Living / Avg.	Land   Avg.	DOM
<a href="#">67-221A Kuhi Street</a>	<b>\$869,000</b>	3 & 2/0	1,810   \$480	3,837   \$226	72

Address	Tax   Maint.   Ass.	Assessed Land	Assessed Building	Assessed Total	Ratio	Year & Remodeled
<a href="#">67-221A Kuhi Street</a>	\$152   \$0   \$0	\$568,200	\$0	\$568,200	153%	2018 & NA

Address	Sold Price	Sold Date	Sold Ratio	Original Ratio	Sold Terms
<a href="#">67-221A Kuhi Street</a>	\$850,000	04-24-2019	98%	95%	Conventional

<a href="#">67-221A Kuhi Street</a> - MLS#: <a href="#">201900658</a> - Original price was \$899,000 - This Brand New Custom home features vaulted pine ceilings, open kitchen with stainless steel appliances, cherry cabinets and quartz counter tops. A formal dining area can also be used as family room that steps out on to 160sqft covered lanai and a fully fenced back yard perfect for entertaining. 3bed/2bath home with a large 2 car garage with additional 128sqft of storage. <b>Region:</b> North Shore <b>Neighborhood:</b> Waialua <b>Condition:</b> Excellent <b>Parking:</b> 3 Car+, Driveway, Garage <b>Total Parking:</b> 5 <b>View:</b> Garden, Mountain <b>Frontage:</b> <b>Pool:</b> None <b>Zoning:</b> 05 - R-5 Residential District <b>Sale Conditions:</b> None <b>Schools:</b> <a href="#">Waialua</a> , <a href="#">Waialua</a> , <a href="#">Waialua</a> * <a href="#">Request Showing</a> , <a href="#">Photos</a> , <a href="#">History</a> , <a href="#">Maps</a> , <a href="#">Deed</a> , <a href="#">Watch List</a> , <a href="#">Tax Info</a>					
--	--	--	--	--	--

DOM = Days on Market