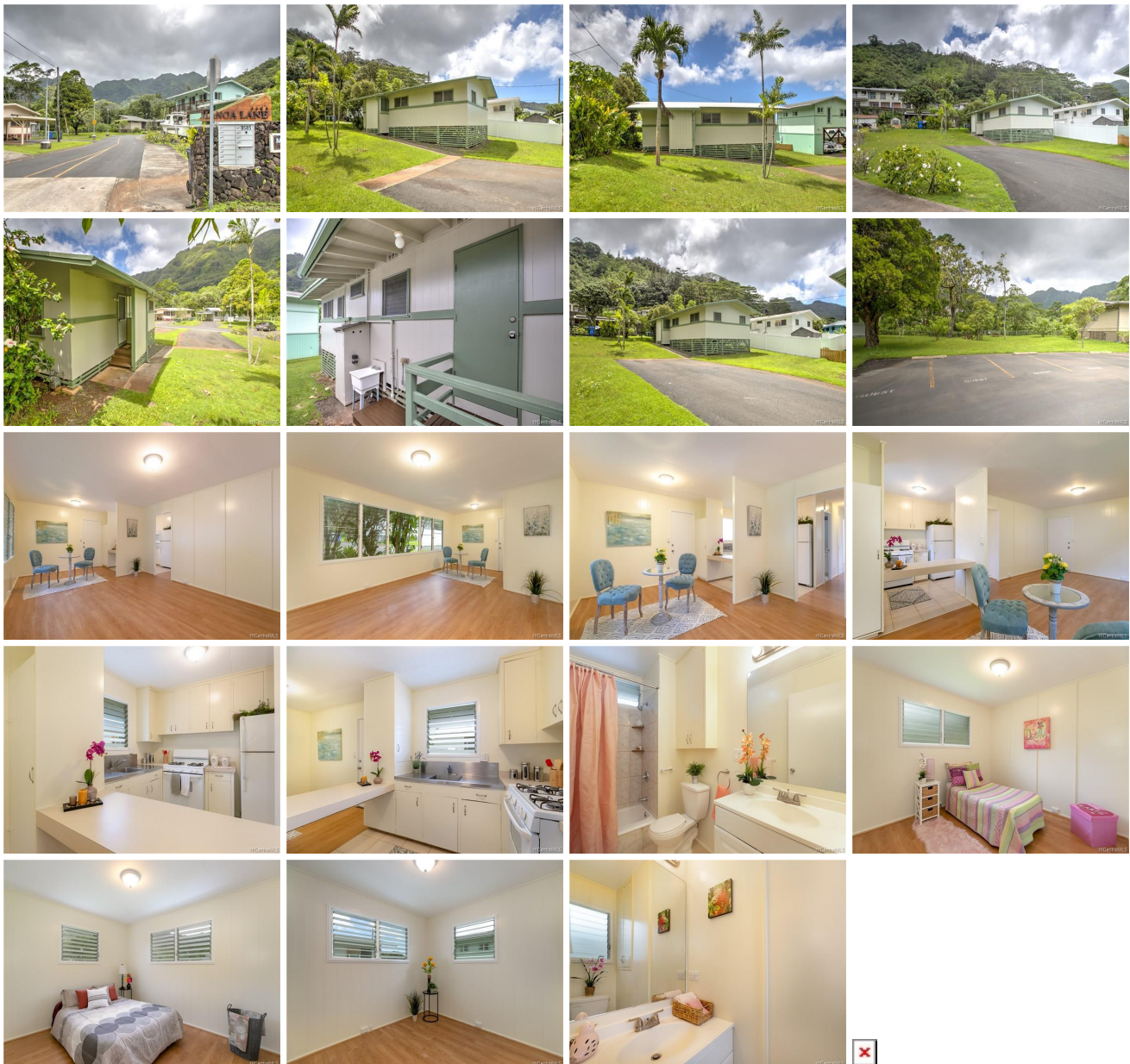


3585 Pinao Street Unit 11, Honolulu 96822 * \$939,500 * Originally \$979,500

Beds: 3	MLS#: 201904163, FS	Year Built: 1963
Bath: 1/1	Status: Cancelled	Remodeled:
Living Sq. Ft.: 836	List Date & DOM: 02-11-2019 & 283	Total Parking: 4
Land Sq. Ft.: 6,132	Condition: Above Average	Assessed Value
Lanai Sq. Ft.: 0	Frontage:	Building: \$89,900
Sq. Ft. Other: 0	Tax/Year: \$398/2019	Land: \$899,800
Total Sq. Ft. 836	Neighborhood: Manoa-upper	Total: \$989,700
Maint./Assoc. \$0 / \$125	Flood Zone : Zone AE - Tool	Stories / CPR: One / Yes
Parking: 3 Car+, Driveway	Frontage:	
Zoning : 04 - R-7.5 Residential District	View: City, Mountain	

Public Remarks: PRICE IMPROVEMENT ~ BEAUTIFUL MOVE-IN-READY SINGLE LEVEL 3 bedroom, 1 1/2 bathroom home on a 6,000+ SF lot, on one of the LARGEST lots in Manoa Lane. This home features fresh interior & exterior paint, spacious driveway and a low maintenance yard. Enjoy the lush mountain view and cool breezes in this quiet neighborhood in gorgeous Manoa. Located just minutes from Manoa Valley District Park, Manoa Market Place, University Of Hawaii and in a GREAT school district. Don't miss this hidden Gem in Manoa! [Monthly property tax amount is based on 2018 property assessed value.] **Sale Conditions:** None **Schools:** , , * [Request Showing](#), [Photos](#), [History](#), [Maps](#), [Deed](#), [Watch List](#), [Tax Info](#)



Address	Price	Bd & Bth	Living / Avg.	Land Avg.	DOM
3585 Pinao Street 11	\$939,500	3 & 1/1	836 \$1,124	6,132 \$153	283

Address	Tax Maint. Ass.	Assessed Land	Assessed Building	Assessed Total	Ratio	Year & Remodeled
3585 Pinao Street 11	\$398 \$0 \$125	\$899,800	\$89,900	\$989,700	95%	1963 & NA

[3585 Pinao Street 11](#) - MLS#: [201904163](#) - Original price was \$979,500 - PRICE IMPROVEMENT ~ BEAUTIFUL MOVE-IN-READY SINGLE LEVEL 3 bedroom, 1 1/2 bathroom home on a 6,000+ SF lot, on one of the LARGEST lots in Manoa Lane. This home features fresh interior & exterior paint, spacious driveway and a low maintenance yard. Enjoy the lush mountain view and cool breezes in this quiet neighborhood in gorgeous Manoa. Located just minutes from Manoa Valley District Park, Manoa Market Place, University Of Hawaii and in a GREAT school district. Don't miss this hidden Gem in Manoa! [Monthly property tax amount is based on 2018 property assessed value.] **Region:** Metro **Neighborhood:** Manoa-upper **Condition:** Above Average **Parking:** 3 Car+, Driveway **Total Parking:** 4 **View:** City, Mountain **Frontage:** Pool: None **Zoning:** 04 - R-7.5 Residential District **Sale Conditions:** None **Schools:** , , * [Request Showing](#), [Photos](#), [History](#), [Maps](#), [Deed](#), [Watch List](#), [Tax Info](#)

DOM = Days on Market