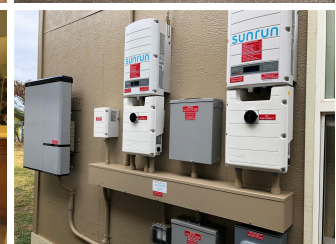
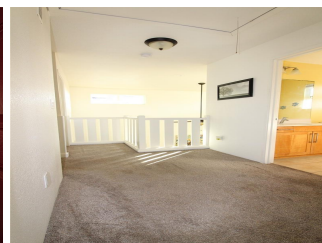
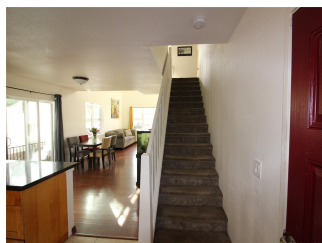
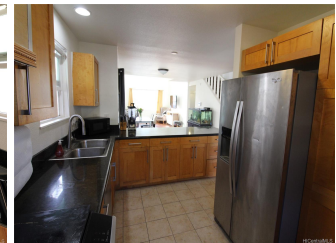


86-222 Leihoku Street, Waianae 96792 * \$585,000 * Originally \$590,000

Beds: 4	MLS#: 201907685, FS	Year Built: 2008
Bath: 3/0	Status: Cancelled	Remodeled:
Living Sq. Ft.: 1,745	List Date & DOM: 03-18-2019 & 71	Total Parking: 4
Land Sq. Ft.: 5,215	Condition: Above Average, Average	Assessed Value
Lanai Sq. Ft.: 0	Frontage:	Building: \$300,200
Sq. Ft. Other: 57	Tax/Year: \$142/2018	Land: \$267,900
Total Sq. Ft. 1,802	Neighborhood: Lualualei	Total: \$568,100
Maint./Assoc. \$0 / \$0	Flood Zone : Zone X - Tool	Stories / CPR: Two / No
Parking: 3 Car+, Driveway, Garage, Street	Frontage:	
Zoning : 05 - R-5 Residential District	View: Mountain, Ocean, Sunset	

Public Remarks: Come visit! Sunday Open House 5/19 from 2-5 PM. Come see this wonderful floor plan in a nice, newer neighborhood with a full bedroom/bathroom downstairs and 3 more bedrooms upstairs featuring Freedom Rail closet organizers. This home features fresh paint inside and out, a two-car garage, a vaulted-ceiling in the living room, indoor laundry room, large fenced backyard and cute front porch. Home also features solar hot water & 38 photovoltaic panels, 2 inverters and 3 batteries - save \$\$ on your electric bills! Close to the beach & shopping center. Sellers will credit Buyers \$5,000 toward closing costs (for the replacement of the upstairs carpet.) **Sale Conditions:** None **Schools:** [Leihoku](#), [Waianae](#), [Waianae](#) * [Request Showing](#), [Photos](#), [History](#), [Maps](#), [Deed](#), [Watch List](#), [Tax Info](#)





Address	Price	Bd & Bth	Living / Avg.	Land Avg.	DOM
86-222 Leihoku Street	\$585,000	4 & 3/0	1,745 \$335	5,215 \$112	71

Address	Tax Maint. Ass.	Assessed Land	Assessed Building	Assessed Total	Ratio	Year & Remodeled
86-222 Leihoku Street	\$142 \$0 \$0	\$267,900	\$300,200	\$568,100	103%	2008 & NA

<p>86-222 Leihoku Street - MLS#: 201907685 - Original price was \$590,000 - Come visit! Sunday Open House 5/19 from 2-5 PM. Come see this wonderful floor plan in a nice, newer neighborhood with a full bedroom/bathroom downstairs and 3 more bedrooms upstairs featuring Freedom Rail closet organizers. This home features fresh paint inside and out, a two-car garage, a vaulted-ceiling in the living room, indoor laundry room, large fenced backyard and cute front porch. Home also features solar hot water & 38 photovoltaic panels, 2 inverters and 3 batteries - save \$\$ on your electric bills! Close to the beach & shopping center. Sellers will credit Buyers \$5,000 toward closing costs (for the replacement of the upstairs carpet.) Region: Leeward Neighborhood: Lualualei Condition: Above Average, Average Parking: 3 Car+, Driveway, Garage, Street Total Parking: 4 View: Mountain, Ocean, Sunset Frontage: Pool: None Zoning: 05 - R-5 Residential District Sale Conditions: None Schools: Leihoku, Waianae, Waianae * Request Showing, Photos, History, Maps, Deed, Watch List, Tax Info</p>						
-------------------------------------------------------------------------------------------------------------------------------------------------------------------------------------------------------------------------------------------------------------------------------------------------------------------------------------------------------------------------------------------------------------------------------------------------------------------------------------------------------------------------------------------------------------------------------------------------------------------------------------------------------------------------------------------------------------------------------------------------------------------------------------------------------------------------------------------------------------------------------------------------------------------------------------------------------------------------------------------------------------------------------------------------------------------------------------------------------------------------------------------------------------------------------------------------------------------------------------------------------------------------------------------------------------------------------------------------------------------------------------------------------------------	--	--	--	--	--	--

DOM = Days on Market