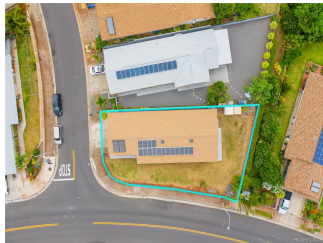
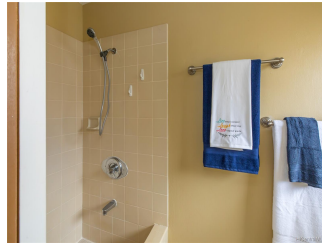


94-1001 Hohola Street, Waipahu 96797 * \$699,000

Sold Price: \$710,000	Sold Date: 09-09-2019	Sold Ratio: 102%
Beds: 3	MLS#: <u>201917999</u>, FS	Year Built: 1988
Bath: 2/0	Status: Sold	Remodeled:
Living Sq. Ft.: 1,378	List Date & DOM: 08-05-2019 & 6	Total Parking: 2
Land Sq. Ft.: 6,137	Condition: Above Average, Average	Assessed Value
Lanai Sq. Ft.: 148	Frontage:	Building: \$214,300
Sq. Ft. Other: 0	Tax/Yr: \$212/2018	Land: \$543,800
Total Sq. Ft. 1,526	Neighborhood: Village Park	Total: \$758,100
Maint./Assoc. \$0 / \$11	Flood Zone : Zone D - Tool	Stories / CPR: One / No
Parking: Driveway, Garage, Street	Frontage:	
Zoning : 05 - R-5 Residential District	View: City, Coastline, Diamond Head, Mountain, Ocean	

Public Remarks: Fantastic location close to shopping, entertainment, and H-1 access! Close enough to be convenient and far away enough to be peaceful! Spacious corner lot with great views and large yard for entertaining. This corner lot feels even bigger than it is as there aren't direct neighbors on two sides of the property! It also means more parking! 16 owned P.V. Panels will lower the electric bill when running the A/C is a must! The Open floor plan allows everyone to be a part of the action. Grab a pomegranate or coconut out of your yard for a fresh start to your day. Mountain views from the living room, kitchen and yard set the stage for a beautiful show around the sunset hour. Come and fall in love with this gem today. **Sale Conditions:** None **Schools:** , , * [Request Showing](#), [Photos](#), [History](#), [Maps](#), [Deed](#), [Watch List](#), [Tax Info](#)



Address	Price	Bd & Bth	Living / Avg.	Land Avg.	DOM
94-1001 Hohola Street	\$699,000	3 & 2/0	1,378 \$507	6,137 \$114	6

Address	Tax Maint. Ass.	Assessed Land	Assessed Building	Assessed Total	Ratio	Year & Remodeled
94-1001 Hohola Street	\$212 \$0 \$11	\$543,800	\$214,300	\$758,100	92%	1988 & NA

Address	Sold Price	Sold Date	Sold Ratio	Original Ratio	Sold Terms
94-1001 Hohola Street	\$710,000	09-09-2019	102%	102%	FHA

[94-1001 Hohola Street](#) - MLS#: [201917999](#) - Fantastic location close to shopping, entertainment, and H-1 access! Close enough to be convenient and far away enough to be peaceful! Spacious corner lot with great views and large yard for entertaining. This corner lot feels even bigger than it is as there aren't direct neighbors on two sides of the property! It also means more parking! 16 owned P.V. Panels will lower the electric bill when running the A/C is a must! The Open floor plan allows everyone to be a part of the action. Grab a pomegranate or coconut out of your yard for a fresh start to your day. Mountain views from the living room, kitchen and yard set the stage for a beautiful show around the sunset hour. Come and fall in love with this gem today. **Region:** Waipahu **Neighborhood:** Village Park **Condition:** Above Average, Average **Parking:** Driveway, Garage, Street **Total Parking:** 2 **View:** City, Coastline, Diamond Head, Mountain, Ocean **Frontage:** **Pool:** None **Zoning:** 05 - R-5 Residential District **Sale Conditions:** None **Schools:** , , * [Request Showing](#), [Photos](#), [History](#), [Maps](#), [Deed](#), [Watch List](#), [Tax Info](#)

DOM = Days on Market