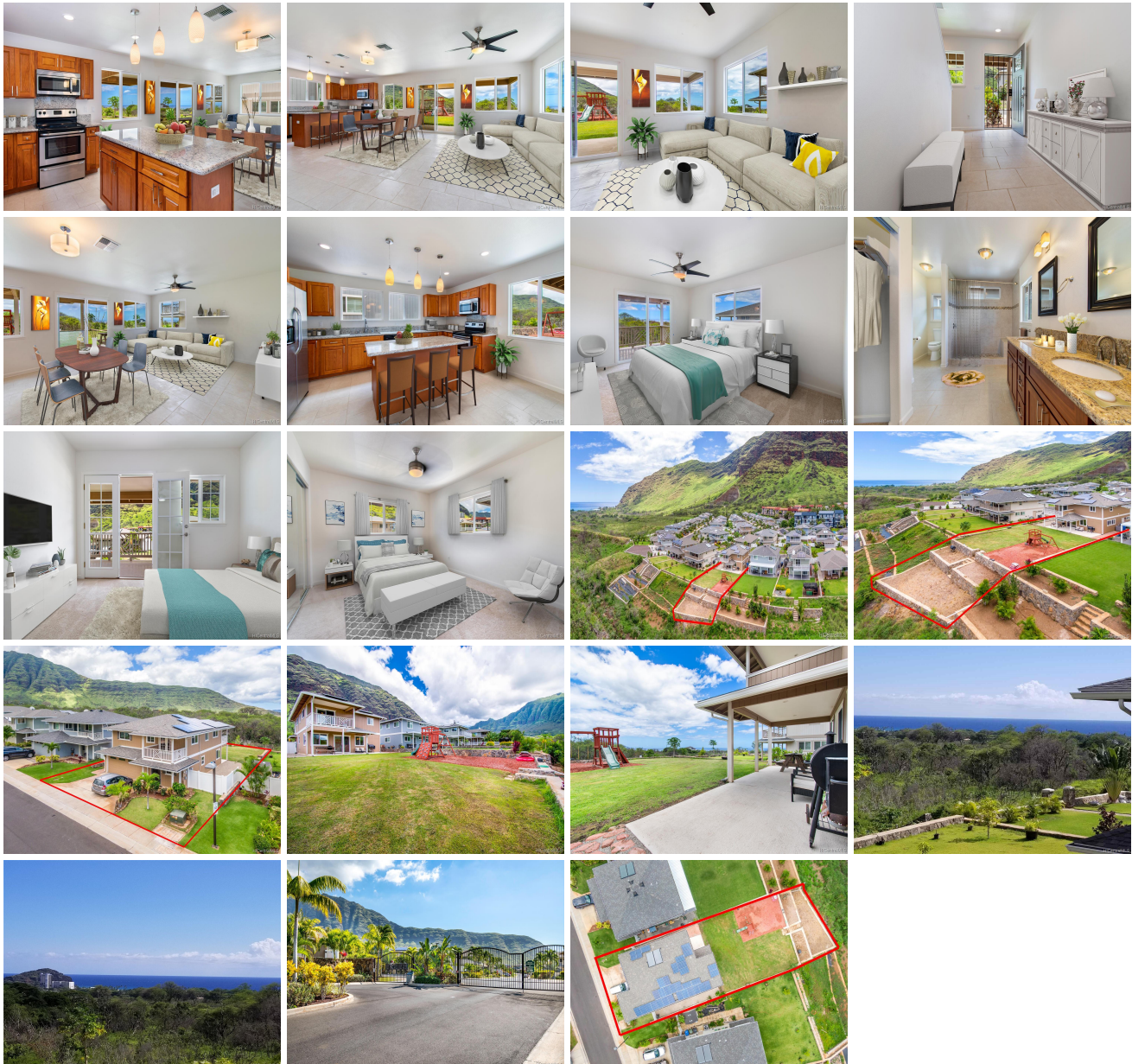


**84-575 Kili Drive Unit 21, Waianae 96792 \* \$745,000**

Sold Price: \$745,000	Sold Date: 09-27-2019	Sold Ratio: 100%
Beds: <b>3</b>	MLS#: <b>201918753, FS</b>	Year Built: <b>2015</b>
Bath: <b>2/1</b>	Status: <b>Sold</b>	Remodeled:
Living Sq. Ft.: <b>1,840</b>	List Date & DOM: <b>07-02-2019 &amp; 44</b>	Total Parking: <b>2</b>
Land Sq. Ft.: <b>7,395</b>	Condition: <b>Excellent</b>	<a href="#">Assessed Value</a>
Lanai Sq. Ft.: <b>220</b>	Frontage: <b>Other</b>	Building: <b>\$393,800</b>
Sq. Ft. Other: <b>210</b>	Tax/Year: <b>\$196/2018</b>	Land: <b>\$279,900</b>
	<b>Makaha</b>	
Total Sq. Ft. <b>2,270</b>	Neighborhood: <b>Oceanview Estates</b>	Total: <b>\$673,700</b>
Maint./Assoc. <b>\$103 / \$0</b>	<a href="#">Flood Zone</a> : <b>Zone D - Tool</b>	Stories / CPR: <b>Two / Yes</b>
Parking: <b>2 Car, Garage</b>	Frontage: <b>Other</b>	
<a href="#">Zoning</a> : <b>12 - A-2 Medium Density Apartme</b>	View: <b>Mountain, Ocean, Other, Sunset</b>	

**Public Remarks:** Come & visit this jewel in the crown with mountain & sunset views in the gated community of Makaha Oceanview Estates. It's an open floor plan with a modern gourmet kitchen, granite counter tops & stainless steel appliances. The kitchen & living room provides a flow of continuity leading unto the covered lanai welcoming you to peaceful, mesmerizing surroundings. The spacious back yard is enjoyed with cool breeze from the mountains to the sea. A master's suite with its own lanai has a view of the ocean providing moments of contemplation after a long day's work at the office. Enjoy pristine beaches along the Waianae Coast! Central A/C, 21 leased solar panels with title transferable. Property sold "As Is". (Some photos are virtually staged for layout possibilities) **Sale Conditions:** None **Schools:** [Makaha](#), [Waianae](#), [Waianae](#) \* [Request Showing](#), [Photos](#), [History](#), [Maps](#), [Deed](#), [Watch List](#), [Tax Info](#)



Address	Price	Bd & Bth	Living / Avg.	Land   Avg.	DOM
<a href="#">84-575 Kili Drive 21</a>	<a href="#">\$745,000</a>	3 & 2/1	1,840   \$405	7,395   \$101	44

Address	Tax   Maint.   Ass.	Assessed Land	Assessed Building	Assessed Total	Ratio	Year & Remodeled
<a href="#">84-575 Kili Drive 21</a>	\$196   \$103   \$0	\$279,900	\$393,800	\$673,700	111%	2015 & NA

Address	Sold Price	Sold Date	Sold Ratio	Original Ratio	Sold Terms
<a href="#">84-575 Kili Drive 21</a>	\$745,000	09-27-2019	100%	100%	Conventional

[84-575 Kili Drive 21](#) - MLS#: [201918753](#) - Come & visit this jewel in the crown with mountain & sunset views in the gated community of Makaha Oceanview Estates. It's an open floor plan with a modern gourmet kitchen, granite counter tops & stainless steel appliances. The kitchen & living room provides a flow of continuity leading unto the covered lanai welcoming you to peaceful, mesmerizing surroundings. The spacious back yard is enjoyed with cool breeze from the mountains to the sea. A master's suite with its own lanai has a view of the ocean providing moments of contemplation after a long day's work at the office. Enjoy pristine beaches along the Waianae Coast! Central A/C, 21 leased solar panels with title transferable. Property sold "As Is". (Some photos are virtually staged for layout possibilities) **Region:** Leeward **Neighborhood:** Makaha Oceanview Estates **Condition:** Excellent **Parking:** 2 Car, Garage **Total Parking:** 2 **View:** Mountain, Ocean, Other, Sunset **Frontage:** Other **Pool:** None **Zoning:** 12 - A-2 Medium Density Apartme **Sale Conditions:** None **Schools:** [Makaha](#), [Waianae](#), [Waianae](#) \* [Request Showing](#), [Photos](#), [History](#), [Maps](#), [Deed](#), [Watch List](#), [Tax Info](#)

DOM = Days on Market