

**85-065A Waianae Valley Road, Waianae 96792 \* \$988,888 \* Originally \$990,000**

Sold Price: \$880,000

Sold Date: 01-15-2020

Sold Ratio: 89%

Beds: **5**

MLS#: **201921935, FS**

Year Built: **2019**

Bath: **3/1**

Status: **Sold**

Remodeled:

Living Sq. Ft.: **2,408**

List Date & DOM: **08-01-2019 & 91**

Total Parking: **4**

Land Sq. Ft.: **7,127**

Condition: **Excellent**

[Assessed Value](#)

Lanai Sq. Ft.: **70**

Frontage: **Ocean**

Building: **\$260,900**

Sq. Ft. Other: **0**

Tax/Year: **\$191/2019**

Land: **\$276,400**

Total Sq. Ft. **2,478**

Neighborhood: **Waianae**

Total: **\$537,300**

Maint./Assoc. **\$0 / \$0**

[Flood Zone](#): **Zone X - Tool**

Stories / CPR: **Two / Yes**

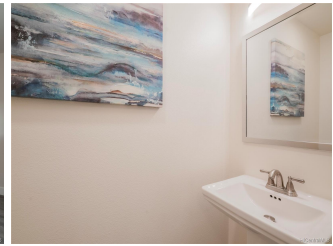
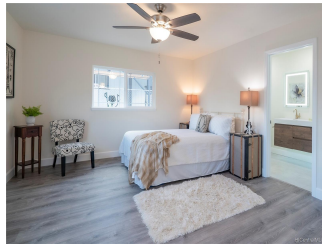
Parking: **3 Car+, Boat, Driveway, Garage**

Frontage: **Ocean**

[Zoning](#): **05 - R-5 Residential District**

View: **Coastline, Mountain, Ocean, Sunset**

**Public Remarks:** 100% Seller Financing Available!!! Dreaming of sunsets from your lanai or swimming with dolphins? Every water activity is steps away when you live on Pokai Bay. Jump in the water for a surf while your kids play in front of the lifeguard stand. Enjoy this large custom home featuring 5 large bedrooms, 3 full baths + 1/2 bath in addition to a second large living room with wet bar and views of the "Rest Camp" surf break. Watch the sunset from your covered lanai. Want to combat global warming? This home features full Smart Home Automation and options to be solar powered!!! Must see and feel this quality home located on the beach park. **Sale Conditions:** None **Schools:** [Waianae](#), [Waianae](#), [Waianae](#) \* [Request Showing](#), [Photos](#), [History](#), [Maps](#), [Deed](#), [Watch List](#), [Tax Info](#)





Address	Price	Bd & Bth	Living / Avg.	Land   Avg.	DOM
<a href="#">85-065A Waianae Valley Road</a>	<b>\$988,888</b>	5 & 3/1	2,408   \$411	7,127   \$139	91

Address	Tax   Maint.   Ass.	Assessed Land	Assessed Building	Assessed Total	Ratio	Year & Remodeled
<a href="#">85-065A Waianae Valley Road</a>	\$191   \$0   \$0	\$276,400	\$260,900	\$537,300	184%	2019 & NA

Address	Sold Price	Sold Date	Sold Ratio	Original Ratio	Sold Terms
<a href="#">85-065A Waianae Valley Road</a>	\$880,000	01-15-2020	89%	89%	VA

<b><a href="#">85-065A Waianae Valley Road</a></b> - MLS#: <a href="#">201921935</a> - Original price was \$990,000 - 100% Seller Financing Available!!! Dreaming of sunsets from your lanai or swimming with dolphins? Every water activity is steps away when you live on Pokai Bay. Jump in the water for a surf while your kids play in front of the lifeguard stand. Enjoy this large custom home featuring 5 large bedroom, 3 full baths + 1/2 bath in addition to a second large living room with wet bar and views of the "Rest Camp" surf break. Watch the sunset from your covered lanai. Want to combat global warming? This home features full Smart Home Automation and options to be solar powered!!! Must see and feel this quality home located on the beach park. <b>Region:</b> Leeward <b>Neighborhood:</b> Waianae <b>Condition:</b> Excellent <b>Parking:</b> 3 Car+, Boat, Driveway, Garage <b>Total Parking:</b> 4 <b>View:</b> Coastline, Mountain, Ocean, Sunset <b>Frontage:</b> Ocean <b>Pool:</b> None <b>Zoning:</b> 05 - R-5 Residential District <b>Sale Conditions:</b> None <b>Schools:</b> <a href="#">Waianae</a> , <a href="#">Waianae</a> , <a href="#">Waianae</a> * <a href="#">Request Showing</a> , <a href="#">Photos</a> , <a href="#">History</a> , <a href="#">Maps</a> , <a href="#">Deed</a> , <a href="#">Watch List</a> , <a href="#">Tax Info</a>					
--	--	--	--	--	--

DOM = Days on Market