

**2480 St Louis Drive, Honolulu 96816 \* \$1,300,000 \* Originally \$1,225,000**

Sold Price: \$1,300,000

Sold Date: 12-16-2019

Sold Ratio: 100%

Beds: **4**

MLS#: **201926618, FS**

Year Built: **1983**

Bath: **3/0**

Status: **Sold**

Remodeled: **2019**

Living Sq. Ft.: **2,178**

List Date & DOM: **10-01-2019 & 8**

Total Parking: **2**

Land Sq. Ft.: **6,480**

Condition: **Excellent**

[Assessed Value](#)

Lanai Sq. Ft.: **600**

Frontage:

Building: **\$273,900**

Sq. Ft. Other: **0**

Tax/Year: **\$80/2018**

Land: **\$869,500**

Total Sq. Ft. **2,778**

Neighborhood: **St. Louis**

Total: **\$1,143,400**

Maint./Assoc. **\$0 / \$0**

[Flood Zone](#): **Zone X - Tool**

Stories / CPR: **Two / No**

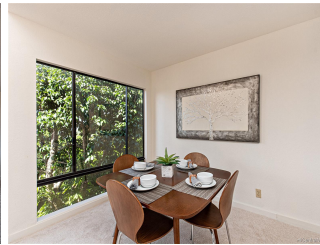
Parking: **2 Car, Carport, Driveway, Street**

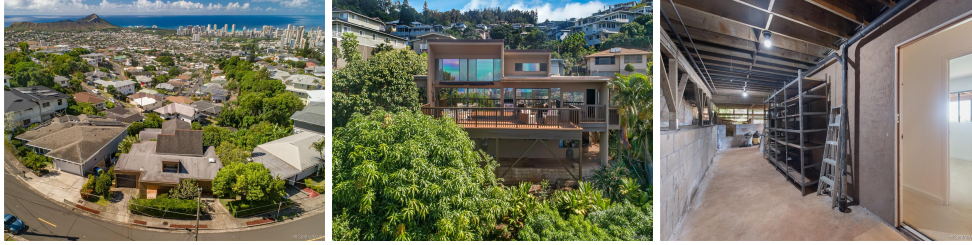
Frontage:

[Zoning](#): **05 - R-5 Residential District**

View: **City, Diamond Head, Garden,  
Mountain, Ocean, Sunset**

**Public Remarks:** Diamond Head and ocean views from this newer home in sought after St Louis Heights! Main level offers large living room, open kitchen, huge entertainment deck, master suite and additional bedroom/bath. No steps from street into main level. Lower level includes 2 bedroom, a bath and wetbar. Ready to move in and enjoy with new carpet and paint. Abundant storage, lushly landscaped. 2 car garage + open parking. Convenient location minutes to Kaimuki, University of Hawaii, Moiliili, H1 freeway and much more! Don't miss this special home! **Sale Conditions:** None **Schools:** , , \* [Request Showing, Photos, History, Maps, Deed, Watch List, Tax Info](#)





Address	Price	Bd & Bth	Living / Avg.	Land   Avg.	DOM
<a href="#">2480 St Louis Drive</a>	<b>\$1,300,000</b>	4 & 3/0	2,178   \$597	6,480   \$201	8

Address	Tax   Maint.   Ass.	Assessed Land	Assessed Building	Assessed Total	Ratio	Year & Remodeled
<a href="#">2480 St Louis Drive</a>	\$80   \$0   \$0	\$869,500	\$273,900	\$1,143,400	114%	1983 & 2019

Address	Sold Price	Sold Date	Sold Ratio	Original Ratio	Sold Terms
<a href="#">2480 St Louis Drive</a>	\$1,300,000	12-16-2019	100%	106%	Conventional

[2480 St Louis Drive](#) - MLS#: [201926618](#) - Original price was \$1,225,000 - Diamond Head and ocean views from this newer home in sought after St Louis Heights! Main level offers large living room, open kitchen, huge entertainment deck, master suite and additional bedroom/bath. No steps from street into main level. Lower level includes 2 bedroom, a bath and wetbar. Ready to move in and enjoy with new carpet and paint. Abundant storage, lushly landscaped. 2 car garage + open parking. Convenient location minutes to Kaimuki, University of Hawaii, Moiliili, H1 freeway and much more! Don't miss this special home! **Region:** Diamond Head **Neighborhood:** St. Louis **Condition:** Excellent **Parking:** 2 Car, Carport, Driveway, Street **Total Parking:** 2 **View:** City, Diamond Head, Garden, Mountain, Ocean, Sunset **Frontage:** **Pool:** None **Zoning:** 05 - R-5 Residential District **Sale Conditions:** None **Schools:** , , \* [Request Showing](#), [Photos](#), [History](#), [Maps](#), [Deed](#), [Watch List](#), [Tax Info](#)

DOM = Days on Market