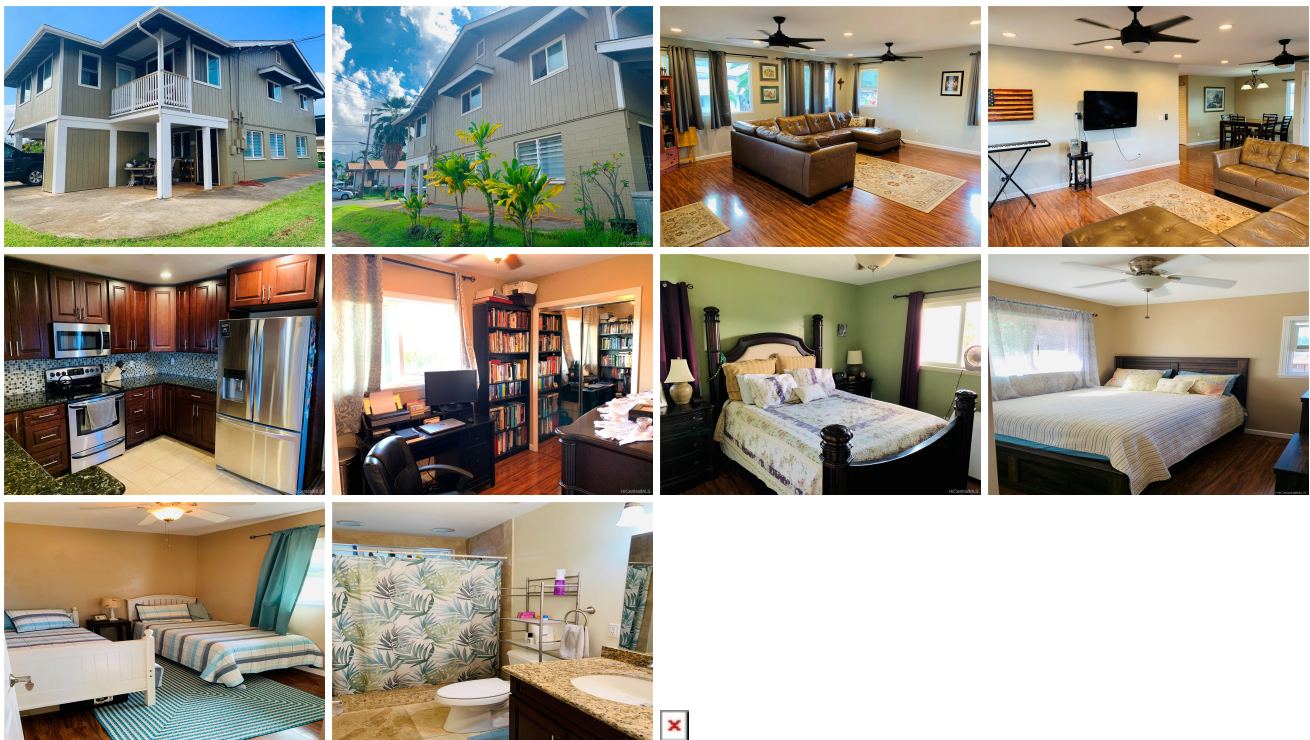


66-941 Oliana Street, Waialua 96791 * \$849,000

Sold Price: \$835,000	Sold Date: 01-07-2020	Sold Ratio: 98%
Beds: 6	MLS#: 201930875, FS	Year Built: 1981
Bath: 2/1	Status: Sold	Remodeled: 2016
Living Sq. Ft.: 2,571	List Date & DOM: 11-04-2019 & 14	Total Parking: 2
Land Sq. Ft.: 5,074	Condition: Excellent	Assessed Value
Lanai Sq. Ft.: 0	Frontage:	Building: \$395,500
Sq. Ft. Other: 0	Tax/Year: \$212/2018	Land: \$460,700
Total Sq. Ft. 2,571	Neighborhood: Paalaakai	Total: \$856,200
Maint./Assoc. \$0 / \$0	Flood Zone : Zone X - Tool	Stories / CPR: Two / No
Parking: Carport, Driveway	Frontage:	
Zoning : 05 - R-5 Residential District	View: None	

Public Remarks: LOCATION, LOCATION, LOCATION! This beautiful home on a corner lot is in a great location, conveniently located near Haleiwa Town and the beaches but away from the hustle and bustle, and is ready for you to come and see. With 4 BR/1.5 BA upstairs, and a separate 2 BR/1 BA downstairs, you can enjoy having extended family or guests stay with you while maintaining your privacy. Upstairs has been fully remodeled and downstairs freshened in 2016! Large grassy back yard, great for kids or pets. Call us today to set up an appointment to view! **Sale Conditions:** None **Schools:** [Waialua](#), [Waialua](#), [Waialua](#) * [Request Showing](#), [Photos](#), [History](#), [Maps](#), [Deed](#), [Watch List](#), [Tax Info](#)



Address	Price	Bd & Bth	Living / Avg.	Land Avg.	DOM
66-941 Oliana Street	\$849,000	6 & 2/1	2,571 \$330	5,074 \$167	14

Address	Tax Maint. Ass.	Assessed Land	Assessed Building	Assessed Total	Ratio	Year & Remodeled
66-941 Oliana Street	\$212 \$0 \$0	\$460,700	\$395,500	\$856,200	99%	1981 & 2016

Address	Sold Price	Sold Date	Sold Ratio	Original Ratio	Sold Terms
66-941 Oliana Street	\$835,000	01-07-2020	98%	98%	Conventional

[66-941 Oliana Street](#) - MLS#: [201930875](#) - LOCATION, LOCATION, LOCATION! This beautiful home on a corner lot is in a great location, conveniently located near Haleiwa Town and the beaches but away from the hustle and bustle, and is ready for you to come and see. With 4 BR/1.5 BA upstairs, and a separate 2 BR/1 BA downstairs, you can enjoy having extended family or guests stay with you while maintaining your privacy. Upstairs has been fully remodeled and downstairs freshened in 2016! Large grassy back yard, great for kids or pets. Call us today to set up an appointment to view! **Region:** North Shore **Neighborhood:** Paalaakai **Condition:** Excellent **Parking:** Carport, Driveway **Total Parking:** 2 **View:** None **Frontage:** Pool: None **Zoning:** 05 - R-5 Residential District **Sale Conditions:** None **Schools:** [Waialua](#), [Waialua](#), [Waialua](#) * [Request Showing](#), [Photos](#), [History](#), [Maps](#), [Deed](#), [Watch List](#), [Tax Info](#)

DOM = Days on Market